

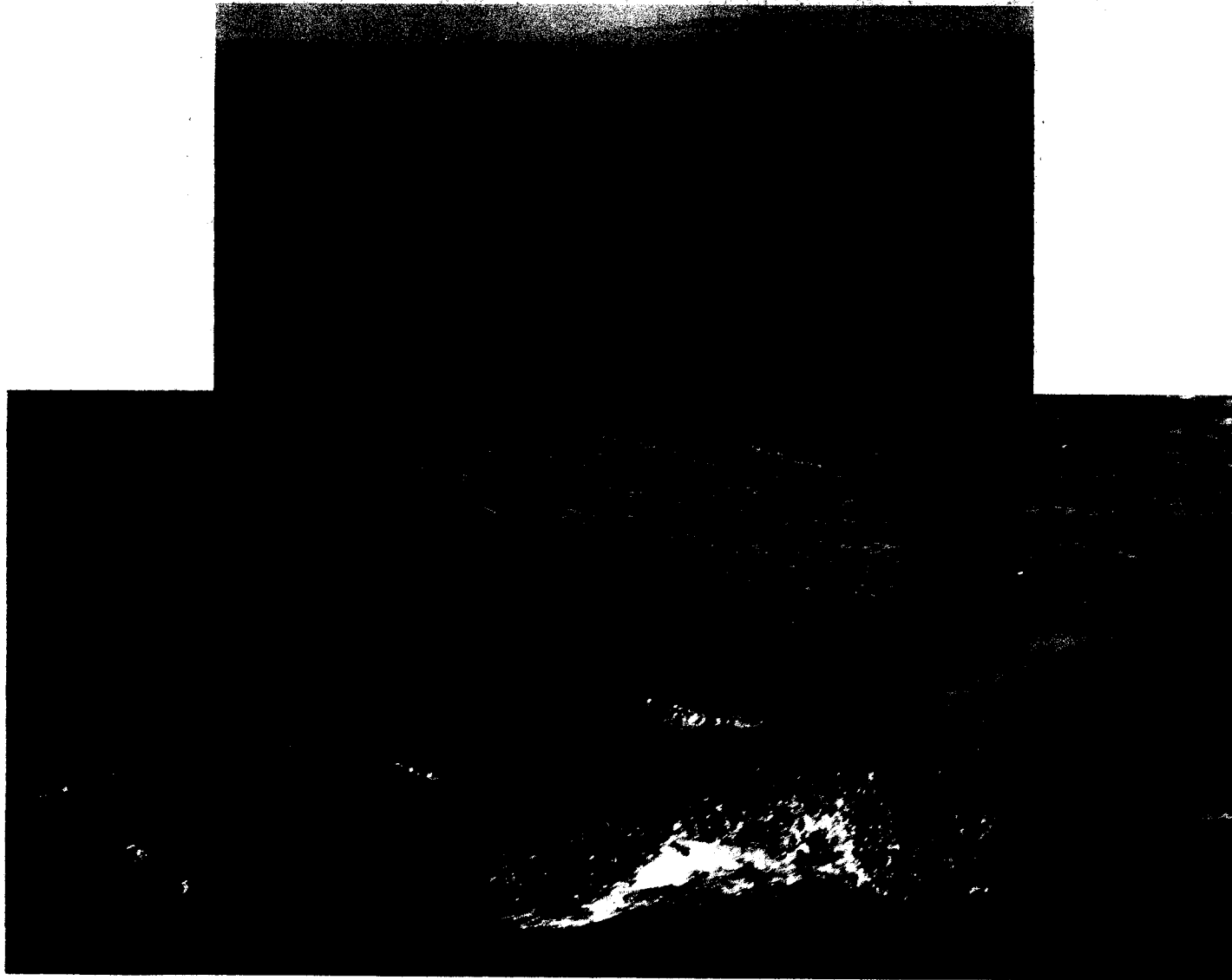
Area and observations

- ❑ The area between Amlia and Atka Islands, including Amlia Pass, Nazan Bay and each side of the pass had the best sign of fish that also offered protection from most wind directions.
- ❑ The ocean bottom at the NE corner of Atka and NW corner of Amlia was very fishable with very good sign of mackerel above 20 fathoms.
- ❑ The ocean bottom at the SW corner of Amlia was more difficult to fish, but still possible with the right net. Sharp pinnacles make this area challenging.
- ❑ Small but numerous schools (3 – 20 tons) were spotted in Atka Pass, but no sets were made due to very strong currents. It seemed possible with the right gear to make a tow between the surface and 20 fathoms and scoop numerous schools up.

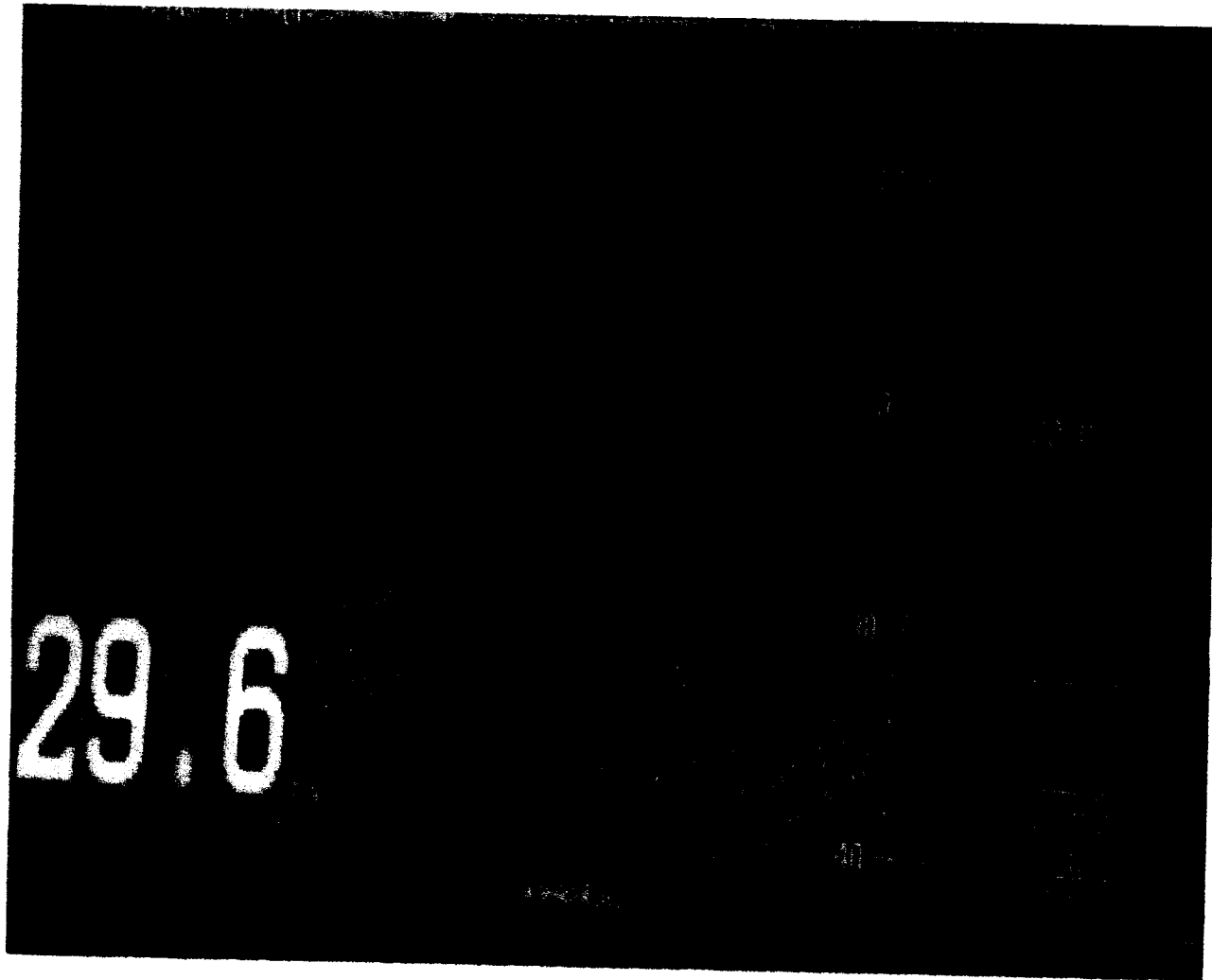
Strong tidal currents in Amlia Pass



Birds and whales often near schools
of mackerel



Typical bottom with sign of mackerel
next to pinnacles



Igitkin Bank

