

**Fishery Management Report No. 13-31**

---

---

**Annual Management Report for Groundfish Fisheries  
in the Kodiak, Chignik, and South Alaska Peninsula  
Management Areas, 2012**

by

**Trent Hartill,**

**Paul Converse,**

and

**Kim Phillips**

September 2013

---

---

Alaska Department of Fish and Game

Divisions of Sport Fish and Commercial Fisheries





***FISHERY MANAGEMENT REPORT NO. 13-31***

**ANNUAL MANAGEMENT REPORT FOR  
GROUNDFISH FISHERIES IN THE KODIAK, CHIGNIK,  
AND SOUTH ALASKA PENINSULA MANAGEMENT AREAS, 2012**

By

Trent Hartill

Alaska Department of Fish and Game, Division of Commercial Fisheries, Kodiak

Paul Converse

Alaska Department of Fish and Game, Division of Commercial Fisheries, Kodiak

and

Kim Phillips

Alaska Department of Fish and Game, Division of Commercial Fisheries, Kodiak

Alaska Department of Fish and Game  
Division of Sport Fish, Research and Technical Services  
333 Raspberry Road, Anchorage, Alaska, 99518-1565

September 2013

The Fishery Management Reports series was established in 1989 by the Division of Sport Fish for the publication of an overview of management activities and goals in a specific geographic area, and became a joint divisional series in 2004 with the Division of Commercial Fisheries. Fishery Management Reports are intended for fishery and other technical professionals, as well as lay persons. Fishery Management Reports are available through the Alaska State Library and on the Internet: <http://www.adfg.alaska.gov/sf/publications/>. This publication has undergone regional peer review.

*Trent Hartill,  
Paul Converse,  
and  
Kim Phillips*

*Alaska Department of Fish and Game, Division of Commercial Fisheries  
351 Research Court, Kodiak, AK 99615, USA*

*This document should be cited as:*

*Hartill, T., P. Converse, and K. Phillips. 2013. Annual management report for groundfish fisheries in the Kodiak, Chignik, and South Alaska Peninsula Management Areas, 2012. Alaska Department of Fish and Game, Fishery Management Report No.13-31, Anchorage.*

The Alaska Department of Fish and Game (ADF&G) administers all programs and activities free from discrimination based on race, color, national origin, age, sex, religion, marital status, pregnancy, parenthood, or disability. The department administers all programs and activities in compliance with Title VI of the Civil Rights Act of 1964, Section 504 of the Rehabilitation Act of 1973, Title II of the Americans with Disabilities Act (ADA) of 1990, the Age Discrimination Act of 1975, and Title IX of the Education Amendments of 1972.

**If you believe you have been discriminated against in any program, activity, or facility please write:**

ADF&G ADA Coordinator, P.O. Box 115526, Juneau, AK 99811-5526

U.S. Fish and Wildlife Service, 4401 N. Fairfax Drive, MS 2042, Arlington, VA 22203

Office of Equal Opportunity, U.S. Department of the Interior, 1849 C Street NW MS 5230, Washington DC 20240

**The department's ADA Coordinator can be reached via phone at the following numbers:**

(VOICE) 907-465-6077, (Statewide Telecommunication Device for the Deaf) 1-800-478-3648,

(Juneau TDD) 907-465-3646, or (FAX) 907-465-6078

**For information on alternative formats and questions on this publication, please contact:**

ADF&G Division of Sport Fish, Research and Technical Services, 333 Raspberry Road, Anchorage, AK 99518 (907) 267-2375.

# TABLE OF CONTENTS

	<b>Page</b>
LIST OF TABLES.....	ii
LIST OF FIGURES.....	iii
LIST OF APPENDICES.....	iii
ABSTRACT.....	1
INTRODUCTION.....	1
PACIFIC COD.....	2
Parallel Season.....	2
Background.....	2
2012 Central Gulf of Alaska Parallel Season.....	3
2012 Western Gulf of Alaska Parallel Season.....	3
State-Waters Season.....	3
Background.....	3
Regulatory Changes.....	3
2012 State-Waters Pacific Cod Season Overview.....	4
Kodiak Area.....	4
Chignik Area.....	5
South Alaska Peninsula Area.....	6
Pacific Cod Harvest Monitoring and Dockside Sampling.....	7
BLACK ROCKFISH.....	7
Background.....	7
2012 Black Rockfish Overview.....	8
Kodiak Area Fishery.....	8
Chignik Area Fishery.....	9
South Alaska Peninsula Area Eastern District Fishery.....	9
Black Rockfish Harvest Monitoring.....	9
SABLEFISH.....	9
LINGCOD.....	9
PARALLEL WALLEYE POLLOCK FISHERIES.....	10
NON-PELAGIC TRAWL CLOSURES.....	10
REFERENCES CITED.....	11
TABLES AND FIGURES.....	13
APPENDIX A. FREQUENTLY USED ACRONYMS AND KEY WORDS.....	55
APPENDIX B. KODIAK, CHIGNIK, AND SOUTH ALASKA PENINSULA MANAGEMENT AREAS STATE-WATERS STATISTICAL AREAS FOR GROUND FISH.....	57

## LIST OF TABLES

Table	Page
1. Top 30 species taken as directed fishery or bycatch, by total weight, from state waters of Kodiak, Chignik, and South Alaska Peninsula areas, as reported on groundfish fish tickets, 2012. ....	14
2. Groundfish emergency orders issued for the Kodiak, Chignik, and South Alaska Peninsula areas, 2012. ....	15
3. Pacific cod harvest, in millions of pounds, from Central and Western Gulf of Alaska Management areas, 1990–2012.....	16
4. Kodiak Area Pacific cod harvest by gear type, during parallel Pacific cod seasons, 1997–2012.....	17
5. Chignik Area state waters Pacific cod harvest by gear type, during parallel Pacific cod seasons, 1997–2012.....	18
6. South Alaska Peninsula Area Pacific cod harvest by gear type, during parallel Pacific cod seasons, 1997–2012.....	19
7. Regulatory development of the state-waters and parallel Pacific cod seasons in the Kodiak, Chignik, and South Alaska Peninsula areas. ....	20
8. Harvest, effort, and value from Kodiak, Chignik, and South Alaska Peninsula areas state-waters Pacific cod seasons, 2000–2012. ....	22
9. Kodiak Area state-waters Pacific cod season openings by gear type, 1997–2012. ....	24
10. Kodiak Area state-waters Pacific cod harvest and effort by gear type, 1997–2012. ....	26
11. Pacific cod harvest and effort by statistical area from the Kodiak Area state-waters season, 2012. ....	27
12. Chignik Area state-waters Pacific cod season openings by gear type, 1997–2012. ....	28
13. Chignik Area state-waters Pacific cod harvest and effort by gear type, 1997–2012. ....	30
14. Pacific cod harvest and effort by statistical area from the Chignik Area state-waters season, 2012.....	31
15. South Alaska Peninsula Area state-waters Pacific cod season openings by gear type, 1997–2012. ....	32
16. South Alaska Peninsula Area state-waters Pacific cod harvest and effort by gear type, 1997–2012. ....	34
17. Pacific cod harvest and effort by statistical area from the South Alaska Peninsula Area state-waters season, 2012. ....	35
18. Kodiak Area black rockfish jig season harvest, effort and price per pound, 1990–2012. ....	36
19. Chignik Area black rockfish jig season harvest, effort and price per pound, 1990–2012. ....	37
20. South Alaska Peninsula Area Eastern District black rockfish jig season harvest, effort and price per pound, 1990–2012.....	38
21. Regulation development of the black rockfish fishery in the Kodiak, Chignik and South Alaska Peninsula areas. ....	39
22. Jig and non-jig commercial harvest of black rockfish from the Kodiak, Chignik, and South Alaska Peninsula Eastern District, 1990–2012.....	40
23. Commercial jig harvest of black rockfish from Kodiak, Chignik, and South Alaska Peninsula areas by district, 2012.....	41
24. Lingcod harvest from Kodiak, Chignik, and South Alaska Peninsula areas, 1988–2012. ....	42
25. Central and Western Gulf of Alaska walleye pollock fishery openings, 2008–2012. ....	43
26. Walleye pollock harvest and effort in millions of pounds from the Central and Western Gulf of Alaska, 1995–2012.....	44

## LIST OF FIGURES

<b>Figure</b>	<b>Page</b>
1. National Marine Fisheries Service statistical and reporting areas.....	45
2. Alaska Department of Fish and Game groundfish registration areas and regions.....	46
3. Pacific cod length frequency by area from the 2012 state-waters fisheries in Kodiak, Chignik, and South Alaska Peninsula areas.....	47
4. Pacific cod length frequency by gear type from the 2012 state-waters fisheries in the Kodiak Area.....	48
5. Age composition of Pacific cod sampled from the 2012 state-waters fishery in Kodiak, Chignik, and South Alaska Peninsula areas.....	48
6. Kodiak, Chignik, and South Alaska Peninsula black rockfish management areas and districts, 2012.....	49
7. Size composition of black rockfish sampled from the 2012 fishery in the Kodiak Area.....	50
8. Age composition of black rockfish sampled from the 2012 fishery in the Kodiak Area.....	50
9. Chignik and South Alaska Peninsula area non pelagic trawl gear closures, 2012.....	51
10. Kodiak Area non pelagic trawl gear closures, 2012.....	52
11. Karluk trawl closure, 2012.....	53

## LIST OF APPENDICES

<b>Appendix</b>	<b>Page</b>
A1. Frequently used acronyms and key words.....	56
B1. Kodiak Management Area state-waters statistical areas for groundfish.....	58
B2. Chignik Management Area state-waters statistical areas for groundfish.....	59
B3. South Alaska Peninsula Area state-waters statistical areas for groundfish.....	60





## ABSTRACT

This report summarizes the 2012 harvest, effort, and management of commercial state-waters and parallel groundfish fisheries managed by the Alaska Department of Fish and Game (ADF&G) in the Kodiak, Chignik, and South Alaska Peninsula areas. The principal state-waters fisheries include Pacific cod *Gadus macrocephalus* and black rockfish *Sebastes melanops*. The 2012 harvest of Pacific cod during state-waters fisheries totaled 41.22 million pounds from 300 vessels, for an estimated exvessel fishery value of \$14.75 million. Black rockfish were predominantly harvested in the Kodiak Area. Kodiak black rockfish harvest totaled 80,940 pounds for an estimated exvessel value of approximately \$33,000. During parallel fisheries, ADF&G adopts most seasons, bycatch limits, and allowable gear types established by the National Marine Fisheries Service for federal fisheries that occur in the adjacent exclusive economic zone. Walleye pollock *Theragra chalcogramma* and Pacific cod are the dominant species harvested during parallel fisheries.

Key words: Kodiak, Chignik, South Alaska Peninsula, groundfish, Pacific cod, black rockfish, state-waters, parallel, commercial fisheries, exvessel, trawl, Annual Management Report, AMR

## INTRODUCTION

Commercial groundfish fisheries inside state waters (0–3 nmi) are managed by the Alaska Department of Fish and Game (ADF&G) under regulations developed by the Alaska Board of Fisheries (BOF). Management authority for commercial groundfish fisheries in the exclusive economic zone (EEZ; 3–200 nmi) off Alaska is delegated to the National Marine Fisheries Service (NMFS) through the Magnuson-Stevens Fishery Conservation and Management Act (MSFCMA 2007). Federal commercial groundfish fisheries are prosecuted under guidelines developed by the North Pacific Fishery Management Council (NPFMC).

Several commercially important groundfish species managed by NMFS also occur inside state waters (Figures 1 and 2). ADF&G issues an annual emergency order (EO) establishing parallel groundfish seasons to facilitate consistency of state and federal regulations for specific transboundary species. The state adopts most NMFS rules during parallel fisheries such that seasons, allowable gear, bycatch limits, and inseason management actions mirror federal regulations of the adjacent federal fisheries unless superseded by BOF regulations.

State-waters seasons occur when the State of Alaska establishes harvest quotas, seasons, or regulations independent of federal/parallel fisheries. ADF&G establishes state-waters seasons for Pacific cod *Gadus macrocephalus*, sablefish *Anoplopoma fimbria*, lingcod *Ophiodon elongates*, black rockfish *Sebastes melanops*, and dark rockfish *Sebastes ciliatus*. State-waters seasons for Pacific cod and sablefish are prosecuted exclusively within state waters of Alaska (0–3 nmi). The state has management authority from shore to the 200 nautical mile boundary of the EEZ for lingcod, dark rockfish, and black rockfish.

During 2012, Pacific cod and walleye pollock *Theragra chalcogramma* comprised the largest volume of groundfish harvested from state waters in the Kodiak, Chignik, and South Alaska Peninsula areas (Table 1). All directed walleye pollock harvest occurred during parallel seasons while Pacific cod were harvested during parallel and state-waters seasons. In 2012, 16 emergency orders were issued to regulate parallel and state-waters groundfish fisheries in the Kodiak, Chignik, and South Alaska Peninsula management areas (Table 2).

This report provides an overview of commercial groundfish fisheries in the Kodiak, Chignik, and South Alaska Peninsula areas and summarizes commercial catch information and regulations that guide management of groundfish resources. Appendix A defines frequently used acronyms and key words associated with groundfish fisheries in the Kodiak, Chignik and South Alaska Peninsula areas.

## **PACIFIC COD**

Pacific cod are considered a transoceanic species and are managed by NMFS as a single Gulf of Alaska (GOA) stock (Shimada and Kimura 1994). The 2012 GOA Pacific cod Acceptable Biological Catch (ABC) of 193,124,942 million pounds (Thompson et al. 2011) was apportioned 65 percent to the Central Gulf of Alaska (CGOA; 125.53 million pounds), 32 percent to the Western Gulf of Alaska (WGOA; 61.79 million pounds), and 3 percent to the Eastern Gulf of Alaska (EGOA 5.79 million pounds) federal management area.

Within the CGOA and WGOA, the ABC is further apportioned such that in federal/parallel fisheries 75 percent of the annual ABC is allocated as total allowable catch (TAC) and apportioned by gear and operation type. Annually, NMFS allocates 60 percent of the TAC to the “A” season which begins January 1 for fixed gear vessels and January 20 for trawl vessels. The remaining 40 percent of the TAC is made available for the “B” season beginning September 1 for pot, longline and trawl gear, and June 10 for jig gear. Twenty-five percent of the annual ABC is harvested in state-waters fisheries under guideline harvest levels (GHL) in state defined management areas. State-waters fisheries are not further apportioned into A or B seasons.

The 2012 CGOA Pacific cod harvest, including federal, parallel, and state-waters seasons, totaled 115.34 million pounds (Table 3), which was eight percent under the CGOA ABC. Approximately 41 percent of the CGOA total harvest was taken from state waters of Alaska (Table 3). Total Pacific cod harvest from the WGOA during 2012 totaled 56.77 million pounds (Table 3), or eight percent under the WGOA ABC. Approximately 45 percent of the total WGOA harvest was taken from state waters of Alaska.

### **PARALLEL SEASON**

#### **Background**

ADF&G annually issues an emergency order establishing parallel Pacific cod seasons in state waters (0–3 nmi) of the Kodiak, Chignik, and South Alaska Peninsula management areas. Emergency orders establishing parallel Pacific cod seasons adopt most federal fishing regulations including season dates, gear, area closures, bycatch limits, or other regulations the commissioner determines reasonably necessary to accommodate federal fishery management measures in state waters. NMFS area closures, including closures for Steller sea lion (SSL) protection, are in effect during parallel fisheries. Federal seabird avoidance requirements are recognized by the state during parallel Pacific cod fisheries as are vessel monitoring system and catch reporting requirements. Vessels participating in parallel Pacific cod fisheries are not required to possess a Federal Fishing Permit or a License Limitation Program permit.

Beginning in 2012, management of federal Pacific cod fisheries in the CGOA and WGOA transitioned from derby style fisheries to gear sector allocations. Sectors were created for catcher-vessels (CV) and catcher-processors (CP) using longline, jig and trawl gear, and a combined CV/CP sector was created for vessels using pot gear. Prior to sector management, all gear types competed and the federal/parallel Pacific cod season would close for all gear types upon achievement of the Pacific cod TAC. Apportionment of the TAC into gear sectors resulted in different season length for each sector. In the CGOA and WGOA the trawl CV sector receives the largest annual Pacific cod allocation; however, little trawl effort for Pacific cod occurs in state-waters as most state waters are closed to non-pelagic trawling in the state waters.

### ***2012 Central Gulf of Alaska Parallel Season***

The CGOA parallel pot gear season opened January 1, 2012 and closed February 10, 2012 when the “A” season TAC was achieved. The CGOA parallel Pacific cod “B” season opened September 1 and closed October 12 when the “B” season TAC was harvested.

Harvest of Pacific cod by all gear types during the parallel fishery within the Kodiak Management Area during the 2012 season totaled 15.38 million pounds (Table 4). The majority of Pacific cod were harvested using longline gear (8.17 million pounds) and pot gear (6.40 million pounds).

The Chignik Management Area is predominantly located within the CGOA although a small portion of the Chignik Area lies within the WGOA federal management area (Figures 1 and 2). Most productive Pacific cod fishing grounds in the Chignik Area are closed to all fishing during federal and parallel Pacific cod fisheries due to closures implemented in 2001 as part of the SSL Biological Opinion and Incidental Take Statement. As a result, Chignik Area parallel season Pacific cod harvests have generally been less than 500,000 pounds annually. Pot gear harvest information is confidential for 2012 as less than three vessels participated (Table 5).

### ***2012 Western Gulf of Alaska Parallel Season***

The WGOA parallel pot gear season opened January 1, 2012 and closed on February 6, 2012 when the “A” season TAC was achieved. The WGOA “B” season opened September 1, 2012 and closed by regulation on December 31, 2012. Harvest of Pacific cod by all gear types during the 2012 South Alaska Peninsula Area parallel season totaled 9.41 million pounds (Table 6). The majority of Pacific cod were harvested by vessels using pot gear (5.72 million pounds).

## **STATE-WATERS SEASON**

### **Background**

The first state-waters Pacific cod seasons occurred in 1997 in the Kodiak, Chignik, and South Alaska Peninsula areas. The state-waters management plans defined season dates, gear types, GHL allocation and rollover provisions, vessel registration requirements, and gear storage regulations for each management area (Table 7). Allowable gear types (pot, jig and hand troll gear) and gear limits (60 pots, 5 jig machines, 5 hand lines) were the same across the three newly-adopted management plans. Fishing season dates, vessel size and registration limits, GHL allocation and rollover, and gear storage were unique to each management area.

GHLs for each management area are set as a percentage of the annual federal Pacific cod ABC. State-waters GHLs were initially capped at 15 percent of the ABC established for the federal WGOA and CGOA management areas. GHLs were structured to increase incrementally to 20 percent and then 25 percent of federal ABCs if harvest in any year was within 10 percent of the established state-waters GHL. By 2003, each management area achieved the maximum GHL increment such that GHLs were fixed at 25 percent for the South Alaska Peninsula, 12.50 percent for the Kodiak Area, 8.75 percent for the Chignik Area, and 3.75 percent for the Cook Inlet Area.

### **Regulatory Changes**

Prior to the 2011 season, the BOF modified the Kodiak, Chignik and South Alaska Peninsula Pacific cod management plans to coordinate state and federal Pacific cod seasons (Table 7). For

the Kodiak and Chignik management areas, opening dates for the state-waters season were coupled to the federal gear sectors in the CGOA and the state-waters seasons in South Alaska Peninsula management area were coupled with the applicable federal gear sectors in the WGOA. Additionally, late-season harvest opportunities were provided in rollover provisions for each area.

## **2012 State-Waters Pacific Cod Season Overview**

Over 41 million pounds of state-waters Pacific cod were harvested from Kodiak, Chignik, and South Alaska Peninsula areas by 300 vessels during 2012 (Table 8). Total exvessel fishery value was approximately \$14.75 million. The 2012 harvest was less than the total 2011 Pacific cod state-waters catch by approximately 1.2 million pounds, but worth approximately \$2.60 million more (Table 8).

### ***Kodiak Area***

The 2012 Kodiak Area GHL was based on 12.5 percent of the 2012 CGOA ABC resulting in a GHL of 15.69 million pounds. Pot and jig gear vessels were each allocated 50 percent of the total GHL or 7.84 million pounds. Pot vessels larger than 58 feet in overall length were restricted to 25 percent of the total state-waters GHL, or 3.92 million pounds, before September 1. The state-waters season began February 17, 2012 (Table 9), seven days after the closure of the parallel CGOA Pacific cod “A” season for pot gear.

Total Pacific cod harvest from the 2012 Kodiak Area state-waters season was 15.39 million pounds taken by 180 vessels (Table 8). By gear type, pot gear vessels harvested 7.45 million pounds while jig vessels harvested 7.94 million pounds (Table 10). The estimated exvessel fishery value was \$5.85 million (Table 8). Fishermen harvested Pacific cod from 31 statistical areas during the season (Table 11). Notable harvests occurred in Uganik/Veikoda bays (statistical area 535732) on the westside of Kodiak Island, Ugak Bay (statistical area 525701) on the eastside of Kodiak Island, and Alitak Bay (statistical area 545632) on the south end of Kodiak Island (Table 11; Appendix B1).

### **Kodiak Pot Gear Season**

A total of 46 pot vessels participated in the 2012 season. The harvest of 7.45 million pounds was below the pot gear allocation by approximately 391,000 pounds (5 percent). The exvessel value of the 2012 pot gear season was \$2.83 million based on an initial average price of \$0.38 per pound (Table 10).

The fleet-wide daily pot harvest ranged from approximately 160,000 pounds to 555,000 pounds per day, averaging approximately 364,000 pounds per day. Average daily catch by vessel ranged between 15,000 and 20,000 pounds per day. Vessels over 58 feet in length accounted for approximately 41 percent of the total pot gear harvest. The season for all pot vessels closed March 1 when the pot gear GHL was projected to be attained (Table 9). The 2012 pot gear season was open for 13 days.

### **Kodiak Jig Gear Season**

The Kodiak Area state-waters jig gear season for Pacific cod opened March 8, 2012, 48 hours after closure of the federal CGOA jig gear A season, and closed May 23, 2012 when GHL was achieved. A total of 145 jig vessels landed 7.94 million pounds (Table 10). The exvessel fishery

value for the Kodiak Area state-waters jig gear fishery totaled approximately \$3.01 million based on an initial average price of \$0.38 per pound.

Through March 17, there was a total of 54 deliveries and approximately 270,000 pounds landed. Beginning March 18 through the close of the season, the average weekly harvest increased to approximately 823,000 pounds, peaking at 1.47 million pounds the first week of April.

### **Allocation Rollover**

Several provisions in the *Kodiak Area Pacific Cod Management Plan* (5 AAC 28.467) provide additional harvest opportunity if ADF&G determines GHLS will not be attained by the regulatory closure date of December 31. The management plan allows unharvested GHLS to be taken by either pot or jig gear after closure of the federal CGOA pot gear “B” season. Due to the small amount of GHLS remaining, ADF&G reopened the Kodiak Area to only jig gear by EO on October 12 after closure of the federal CGOA “B” season (Table 9). Three jig vessels harvested approximately 35,000 pounds of Pacific between October 12 and the season closure on December 31.

### ***Chignik Area***

The 2012 Chignik Area GHLS was based on 8.75 percent of the 2012 CGOA ABC resulting in a GHLS of 10.98 million pounds. The pot gear season opens seven days after closure of the federal CGOA pot gear A season or March 7, whichever is later and the jig gear season opens by regulation on March 15 (Table 12). Vessels using pot gear were allocated 90 percent of the GHLS or 9.88 million pounds. Vessels using jig gear were allocated 10 percent or 1.09 million pounds (Table 13).

The total 2012 Chignik Area state-waters season Pacific cod harvest was 10.47 million pounds taken by 25 vessels (Table 8). By gear type, 20 pot vessels harvested 10.23 million pounds while five jig vessels harvested 0.24 million pounds (Table 13). The estimated exvessel fishery value was \$3.69 million (Table 8). Most harvest occurred in statistical areas around Mitrofanina Island (585531), Semidi Islands (565602), and near Chiginagak Bay (565633; Table 14; Appendix B2).

### **Chignik Pot Gear Season**

The 2012 federal CGOA Pacific cod season closed February 10, therefore, the Chignik Area state-waters Pacific cod season opened March 7. A total of 20 vessels participated in the 2012 season; down from 23 in 2011. Harvest totaled 10.22 million pounds<sup>1</sup> of Pacific cod (Table 14). Despite fewer vessels and a higher GHLS than 2011, the pot gear season was the second fastest season since 1997, lasting 21 days. The catch was primarily delivered to a floating processor located in the Chignik Area, although approximately 20 percent of the landings were tendered to shore-based processors outside of the Chignik Area.

### **Chignik Jig Gear Season**

On March 15 the state-water jig season opened by regulation, and the parallel jig A season closed. Five jig vessels harvested 243,185 pounds (Table 14). Similar to previous seasons, the first jig landing occurred after the pot season closed and the floating processor had left the area. Lack of local processor has limited jig effort in the Chignik area. The final jig gear delivery for the 2012 season occurred on June 8, 2012 and the season closed by regulation on December 31, 2012.

---

<sup>1</sup> Total includes Pacific cod harvested after the August 15 GHLS allocation rollover date.

## **Allocation Rollover**

Several provisions in the *Chignik Area Pacific Cod Management Plan* (5 AAC 28.537) provide additional harvest opportunity if ADF&G determines GHLS will not be attained by the regulatory closure date of December 31. The management plan allows unharvested GHLS to be taken by either pot or jig gear after closure of the federal CGOA pot gear “B” season. ADF&G reopened the Chignik Area to both pot and jig gear by EO on October 12 after closure of the federal CGOA “B” season (Table 12). No effort occurred after October 12 and the season closed by regulation December 31.

## ***South Alaska Peninsula Area***

The 2012 South Alaska Peninsula Area GHLS was based on 25 percent of the 2012 WGOA ABC of 61.79 million pounds resulting in a state-waters GHLS of 15.5 million pounds. The state-waters pot gear season opens seven days after closure of the federal WGOA Pacific cod pot gear sector A season, or March 7, whichever is later (Table 15). Vessels using pot gear were allocated 85 percent of the total GHLS or 13.13 million pounds, and vessels using jig gear were allocated 15 percent of the GHLS, or 2.32 million pounds (Table 16). The state-waters jig season opens 48 hours after closure of the federal WGOA jig gear A season; however, if the federal jig season has not closed by March 15, the state-waters season may open based on inseason assessment of effort, harvest rate or remaining federal quota.

The 2012 total state-waters season Pacific cod harvest was 15.36 million pounds taken by 95 vessels (Table 8). By gear type, pot vessels harvested 13.37 million pounds while jig vessels harvested 1.99 million pounds; six vessels used both pot and jig gear (Table 16). The estimated exvessel fishery value was \$5.20 million (Table 8). Harvest occurred in 33 distinct statistical areas during the 2012 state-waters season (Table 17). Notable harvests occurred near Sanak Island (625401) and around the Shumagin Islands (605502 and 605504; Table 17; Appendix B3).

## **South Alaska Peninsula Pot Gear Season**

The 2012 federal WGOA Pacific cod season closed February 6, therefore, the South Alaska Peninsula Area state-waters Pacific cod season opened March 7. A total of 53 vessels participated in the fishery. The total pot gear harvest of 13.37 million pounds exceeded the pot gear allocation by approximately 234,000 pounds (2 percent). The preliminary exvessel value of the pot gear season was \$4.54 million based on an initial average price of \$0.34 per pound. Pacific cod effort was concentrated in three geographical areas; 1) Shumagin Islands near the eastern boundary of the management area, 2) Ikaton Peninsula on Unimak Island, and Sanak Island, and 3) Usof Bay on the south side of Unalaska Island (Appendix B3).

A total of 28 vessels targeted Pacific cod with pot gear in the proximity of the Shumagin Islands. Harvest totaled approximately 5.7 million pounds which accounted for 43 percent of the total 2012 South Alaska Peninsula state-waters Pacific cod pot gear catch. A total of 18 vessels targeted Pacific cod near Ikaton Peninsula and Sanak Island, harvesting approximately 5.2 million pounds or 39 percent of the total pot catch. Seven vessels targeted Pacific cod south of Unalaska Island, harvesting approximately 2.3 million pounds or 17 percent of the pot catch. The state-waters season for vessels using pot gear was open for 16 days, closing March 22, 2012 (Table 15).

## **South Alaska Peninsula Jig Gear Season**

The state-waters jig season in the South Alaska Peninsula Area opens 48 hours after closure of the federal WGOA jig gear A season; however, if the federal jig season has not closed by March 15, the state-waters season may open based on inseason assessment of effort, harvest rate or remaining federal quota.

The 2012 jig gear season opened on March 21, 2012, following a 48 hour weather delay. Forty-eight jig vessels harvested 1.99 million pounds for an estimated exvessel fishery value of \$677,000 based on an initial price of \$0.34 per pound (Table 16). Effort and harvest were relatively consistent from late March through the middle of April, when weekly harvest ranged from approximately 208,000 to 293,000 pounds. Effort and harvest peaked the final week of April, when approximately 373,000 pounds were harvested, then declined the remainder of the season.

The jig gear season closed on June 10, 2012 prior to the start of the federal WGOA jig gear “B” season. Most effort was focused around the Shumagin Islands near the community of Sand Point.

## **Pacific Cod Harvest Monitoring and Dockside Sampling**

During the 2012 season, daily harvest reports were obtained from vessel operators using pot gear. Daily pot vessel harvest reports included the daily number of pots pulled, pounds retained, and fishing location for each vessel. Processor and vessel catch reports were subsequently referenced against landing data derived from the Interagency Electronic Reporting System (eLandings) to track daily catch and forecast harvests.

Dockside sampling was conducted in the port of Kodiak throughout the state-waters season and in Sand Point, King Cove and Chignik during periods of high fishing effort. Dockside samplers conducted confidential interviews with vessel operators to obtain information on catch location, catch per unit effort, and bycatch. Samplers also collected data on fish length, weight, sex, reproductive status, and age.

Dockside sampling staff in Kodiak, King Cove, and Sand Point conducted 210 skipper interviews and collected biological samples from 301 deliveries from the Kodiak, South Alaska Peninsula, and Chignik management areas. During 2012, samplers collected 9,979 fish lengths, 2,136 individual fish weights, 2,137 observations of sex and maturity and extracted 2,137 otolith pairs for aging.

Average Pacific cod length was 64 cm in Kodiak, 63 cm in Chignik, and 60 cm in South Alaska Peninsula area (Figure 3). Average fish length varied slightly across areas and gear types (Figure 4). Preliminary analysis indicates the age of Pacific cod harvested in 2012 ranged from 3 to 9 years. Pacific cod were predominantly age-5 and 6 for all areas (Figure 5).

# **BLACK ROCKFISH**

## **Background**

Prior to 1997 black rockfish fisheries were managed by NMFS as part of the pelagic shelf rockfish group that included dusky *Sebastes variabilis* (previously *S. ciliates*), yellowtail *S. flavidus*, and widow *S. entomelas* rockfish. Annually, a single ABC was established for all species combined in the pelagic shelf rockfish group. However, dusky rockfish were the

dominant species in the pelagic shelf group and were the most frequently observed species during NMFS rockfish assessment surveys. As a result, the ABC was largely based on dusky rockfish biomass estimates, resulting in few restrictions on the take of the other species within the group. Under this management strategy, ADF&G was concerned about localized depletion given black rockfish are long-lived near shore species that tend to be unevenly distributed. During some years ADF&G closed state waters by emergency order to prevent overexploitation of the stock although the adjacent federal waters would remain open to directed fishing.

The majority of black rockfish were believed to reside inside state waters, therefore ADF&G submitted a fisheries management plan amendment to the NPFMC in 1997 requesting that NMFS relinquish black rockfish management within the EEZ of the GOA to the state. The amendment passed in 1998 and management authority transferred to ADF&G. To better distribute effort and discourage localized fishing effort, ADF&G began assigning GHL's to state groundfish management areas within the CGOA. The initial GHL for the Kodiak Area was set at 190,000 pounds (Table 18) and further divided into seven districts each with separate GHLs (Figure 6). The Chignik and South Alaska Peninsula Area Eastern District GHLs were established at 100,000 pounds each (Tables 19 and 20). Since 2008, the BOF has provided further structure to black rockfish fishery regulations through registration requirements, trip limits and bycatch amounts (Table 21).

During 2006 and 2007, approximately 30,000 pounds of black rockfish were reported annually as bycatch to non-jig fisheries (Table 22). The majority of reported bycatch occurred during federally managed trawl fisheries in the EEZ. In response, ADF&G began monitoring rockfish bycatch from 2008 federal trawl fisheries. ADF&G personnel concluded the elevated black rockfish bycatch levels were a result of misidentification or misreporting on fish tickets, and that most fish identified as black rockfish by processing plants were either dark or dusky rockfish. ADF&G has continued limited federal rockfish bycatch monitoring since that time.

## **2012 Black Rockfish Overview**

The black rockfish fishery in the Kodiak, Chignik and South Alaska Peninsula area opened January 1, 2012. GHLs were attained in three districts in Kodiak Area during 2012, while GHLs were not met in the South Alaska Peninsula or Chignik areas.

### ***Kodiak Area Fishery***

The 2012 Kodiak Area black rockfish GHL totaled 135,000 pounds. Beginning in 2012 no GHLs were set for the Southwest and Mainland districts. Due to information suggesting limited rockfish habitat, both districts were established as bycatch only.

Effort and harvest primarily occurred in the Northeast, Eastside, and Afognak districts from January through October. A total of 19 vessels harvested 80,940 pounds of black rockfish during 2012 (Table 18). No fishing effort occurred in the Southwest District, and 737 pounds of bycatch were reported from the Westside District (Table 23). The exvessel value of the fishery was approximately \$33,000 based on an average price of \$0.41 per pound.



### ***Chignik Area Fishery***

The 2012 Chignik Area black rockfish GHL was 100,000 pounds. Harvest was capped at 45,000 pounds per district to distribute harvest throughout the management area. A single vessel participated in the fishery resulting in confidential harvest information (Table 19). Processor interest and market availability likely limited participation in the fishery.

### ***South Alaska Peninsula Area Eastern District Fishery***

Since 2006, the Eastern District of the South Alaska Peninsula Area black rockfish GHL has been set at 75,000 pounds. No vessels participated in the fishery in 2012 (Table 20).

### ***Black Rockfish Harvest Monitoring***

Black rockfish harvests are monitored through fish ticket records, vessel registrations and dockside sampling of commercial catches. Information collected by dockside samplers includes fishing location and effort (days fished) as well as fish length, weight, sex, and reproductive maturity. Additionally, otoliths are collected for age determination. Due to limited participation in the Chignik and South Alaska Peninsula areas, 2012 black rockfish dockside data collection was limited to the Kodiak Area.

Mean size of black rockfish sampled from landings in the Kodiak Area during 2012 was 48 cm in length (Figure 7). Otoliths were collected from 781 black rockfish for aging during the 2012 season. Ages for black rockfish in 2012 ranged from 6 to 36 years, with an average age of 16 (Figure 8).

## **SABLEFISH**

Sablefish in state waters are managed separately from the federal sablefish individual fishing quota program. Known habitat for mature sablefish is limited in most state waters. Most sablefish are typically associated with deeper waters near the continental shelf and abundance is limited inside state waters east of Unimak Pass.

The BOF prohibited directed state-waters sablefish fisheries in the Kodiak and Chignik areas in 2002 and in the Eastern District of South Alaska Peninsula Area in 2003. Since that time, sablefish may only be retained with certain restrictions as bycatch to other commercial groundfish fisheries. Sablefish bycatch is managed by NMFS under federal rules which are adopted inside state waters by ADF&G through the global groundfish EO. The 2012 sablefish bycatch harvest in state waters of the Kodiak Area totaled 15,570 pounds (Table 1). Harvest in the Chignik Area and South Peninsula Eastern District is confidential.

## **LINGCOD**

Commercial regulations in the Kodiak and Chignik areas prohibit retention of lingcod prior to July 1 and require retained lingcod to be a minimum of 35 inches in total length. These regulations are designed to prevent commercial exploitation during nest-guarding and ensure only mature fish are harvested. The South Alaska Peninsula Area is believed to be the western boundary of lingcod distribution range (Mecklenburg et al. 2002), therefore, seasonal retention and size limit regulations are not in place to further limit harvest.

Mechanical jigging machine and hand troll gear may be used to target lingcod. Historically, harvests of lingcod in the Kodiak, Chignik and South Alaska Peninsula areas have generally remained below 100,000 pounds annually since 1988 and most harvest occurs as bycatch in other

commercial groundfish fisheries. During 2008, harvest increased considerably to 521,259 pounds largely due to increased retention by trawl vessels (Table 24). In response, ADF&G reduced the allowable lingcod bycatch rate from 20 percent to five percent prior to the start of the 2009 season. Since that time harvest has ranged from approximately 67,000 pounds to 158,000 pounds (Table 24).

## **PARALLEL WALLEYE POLLOCK FISHERIES**

State waters are opened for parallel walleye pollock seasons concurrent with adjacent federal seasons managed by NMFS. Annually, harvest quotas are released in four openings designated A, B, C, and D seasons (Table 25). In some areas more than one opening occurred within a season to ensure the full seasonal allocation was harvested. Walleye pollock were primarily harvested by vessels using pelagic trawl gear.

Harvest of walleye pollock in 2012 totaled 154.5 million pounds in the CGOA and 60.2 million pounds in the WGOA (Table 26). Approximately 18 percent of the total 2012 CGOA walleye pollock harvest and 73 percent of total the 2012 WGOA harvest occurred in state waters (Table 26).

## **NON-PELAGIC TRAWL CLOSURES**

The history of non-pelagic trawl closures around Kodiak Island and along the Alaska Peninsula is variable. Generally, bays have been closed year-round since 1986. Additional changes occurred in 1994 and 1995 when the BOF opened state waters to non-pelagic trawling near Castle Rock and Sanak Island in the South Alaska Peninsula Area (Figure 9).

Non-pelagic trawling was considered again during 1999 in response to public proposals that sought to close all state waters within the Kodiak and Chignik areas to non-pelagic trawling. The BOF adopted the proposals with the exception of an area along the west side of Kodiak Island, which remains open on a seasonal basis (Figure 10). Seasonal openings were designed to allow non-pelagic trawl vessels access to flatfish resources during parallel fisheries. The remainder of state-waters within the Kodiak and Chignik areas were closed to non-pelagic trawl gear.

In response to concern over incidental king salmon harvest in trawl fisheries, the BOF adopted a proposal at the 2011 Kodiak finfish BOF meeting, closing a portion the west side of Kodiak Island to trawl gear approximately 3 miles on either side of the mouth of Karluk River (Figure 11).

## REFERENCES CITED

- Mecklenburg, C. W., T. A. Mecklenburg and L. K. Thorsteinson. 2002. Fishes of Alaska. American Fisheries Society. Bethesda, Maryland.
- MSFCMA (Magnuson-Stevens Fishery Conservation and Management Act). 2007. Magnuson-Stevens Fishery Conservation and Management Act as amended through January 12, 2007. U. S. Department of Commerce, NOAA Technical Memorandum.
- Shimada, A. M., and D. K. Kimura. 1994. Seasonal movements of Pacific cod (*Gadus macrocephalus*) in the eastern Bering Sea and adjacent waters based on tag-recapture data. U.S. National Marine Fisheries Service, Fishery Bulletin 92:800-816.
- Thompson, G. G., J. N. Ianelli, and M. E. Wilkins. 2011. Assessment of the Pacific cod stock in the Gulf of Alaska. [In] Plan team for the groundfish fisheries of the Gulf of Alaska (compiler), stock assessment and fishery evaluation report for the groundfish resources of the Gulf of Alaska. North Pacific Fishery Management Council, Anchorage.



## **TABLES AND FIGURES**

Table 1.—Top 30 species taken as directed fishery or bycatch, by total weight, from state waters of Kodiak, Chignik, and South Alaska Peninsula areas, as reported on groundfish fish tickets, 2012.

Species	Kodiak	Chignik	South Alaska Peninsula	Total Weight (Pounds)
Walleye Pollock	22,423,739	5,406,278	43,679,953	71,509,970
Pacific cod	30,777,761	10,585,485	24,765,983	66,129,230
Halibut	1,606,167	434,686	1,077,884	3,118,737
Arrow flounder	203,445	85,762	1,013,602	1,302,809
Big skate	370,408	Confidential	565	370,973
Longnose skate	195,818	4,165	568	200,551
Octopus	115,451	374	65,150	180,975
Flathead sole	28,499	5,201	128,894	162,594
Rock sole	38,436	867	90,013	129,316
Black rockfish	81,431	786	551	82,768
Skate	58,396	31	4,976	63,403
Jellyfish	0	1,951	41,989	43,940
Lumpsucker	4,514	1,448	32,476	38,438
Chinook salmon	5,737	599	17,531	23,867
Northern rockfish	319	0	20,064	20,383
Pacific Ocean Perch	1,144	64	16,007	17,215
Eulachon	14,050	77	2,200	16,327
Sablefish	15,570	Confidential	Confidential	15,570
Dusky rockfish	7,771	92	5,972	13,835
Spiny dogfish	5,330	176	6,858	12,364
Lingcod	10,278	Confidential	0	10,278
Yelloweye rockfish	7,456	1,218	1,065	9,739
Starry flounder	Confidential	0	106	106
Rougheyeye rockfish	1,861	2,159	1,781	5,802
Rex sole	3,683	147	1,818	5,648
Sculpin	1,925	57	3,356	5,338
Shark	1,143	Confidential	3,213	4,396
Dark rf	4,001	0	48	4,049
Capelin	1,055	17	1,061	2,133
Shortraker rockfish	914	696	267	1,877

Notes: Weights reported in whole fish pounds. Discards at sea excluded.

Data are confidential in cases where fewer than 3 vessels or processors participated.

Table 2.—Groundfish emergency orders issued for the Kodiak, Chignik, and South Alaska Peninsula areas, 2012.

<b>Emergency Order</b>	<b>Effective Date</b>	<b>Explanation</b>
4-GF-01-12	January 1, 2012	Established parallel commercial groundfish fishing seasons and bycatch limits in the Kodiak, Chignik, and South Alaska Peninsula, Bering Sea-Aleutian Islands, and Chukchi-Beaufort areas.
4-GF-02-12	February 17, 2012	Opened Kodiak Area state-waters Pacific cod season to pot gear.
4-GF-04-12	March 1, 2012	Closed Kodiak Area state-waters Pacific cod season to pot gear.
4-GF-05-12	March 8, 2012	Opened Kodiak Area state-waters Pacific cod season to jig gear.
4-GF-07-12	March 21, 2012	Opened South Peninsula Area state-waters Pacific cod season to jig gear.
4-GF-09-12	March 22, 2012	Closed South Peninsula Area state-waters Pacific cod season to pot gear.
4-GF-11-12	March 28, 2012	Closed Chignik Area state-waters Pacific cod season to pot gear.
4-GF-13-12	May 23, 2012	Closed Kodiak Area state-waters Pacific cod season to jig gear.
4-GF-15-12	June 10, 2012	Closed South Peninsula Area state-waters Pacific cod season to jig gear.
4-GF-16-12	June 10, 2012	Closed Chignik Area state-waters Pacific cod season to jig gear.
4-GF-17-12	June 29, 2012	Re-opened the Chignik Area state-waters Pacific cod season to jig gear.
4-GF-19-12	August 18, 2012	Increased trip limit for black rockfish in the Westside, Southeast and Afognak districts of the Kodiak Area.
4-GF-20-12	August 18, 2012	Closed the black rockfish fishery in the Kodiak Area Eastside District.
4-GF-22-12	October 12, 2012	Opened the Chignik Area state-waters Pacific cod season to pot gear.
4-GF-23-12	October 12, 2012	Opened the Kodiak Area state-waters Pacific cod season to jig gear.
4-GF-24-12	November 6, 2012	Re-opens the Kodiak Area state-waters Pacific cod jig season as a non-exclusive registration area.

Notes: Omitted emergency orders (e.g., 4-GF-3-13) enacted for management areas outside of Kodiak, Chignik, and South Alaska Peninsula.  
 GHL = guideline harvest level.

Table 3.—Pacific cod harvest, in millions of pounds, from Central and Western Gulf of Alaska Management areas, 1990–2012.

NMFS Area	Year	Federal Waters		State Waters		Total Harvest	ABC	Discards at Sea
		Harvest	% of Total	Harvest	% of Total			
Central GOA	1990	79.79	87	11.82	13	91.61	130.95	0.58
	1991	81.24	81	19.55	19	100.79	106.48	0.51
	1992	73.12	82	16.53	18	89.65	85.40	0.46
	1993	60.31	84	11.60	16	71.91	77.50	0.66
	1994	50.28	80	12.89	20	63.16	68.89	0.81
	1995	72.84	77	21.76	23	94.60	100.69	0.79
	1996	71.93	81	16.76	19	88.70	94.58	3.22
	1997	76.64	76	24.59	24	101.24	113.20	1.83
	1998	72.63	74	24.90	26	97.53	108.20	0.39
	1999	71.03	68	34.08	32	105.11	117.22	0.17
	2000	56.32	72	21.71	28	78.03	96.01	0.45
	2001	50.00	78	14.08	22	64.08	85.20	0.80
	2002	42.44	70	18.18	30	60.62	69.84	1.11
	2003	41.97	68	20.14	32	62.11	64.02	0.99
	2004	47.26	66	24.19	34	71.45	78.93	0.49
	2005	38.94	62	24.00	38	62.94	73.01	0.24
	2006	37.21	63	22.29	37	59.50	83.49	0.14
	2007	43.56	65	22.98	35	66.54	83.49	0.41
	2008	45.23	64	25.85	36	71.07	83.56	1.16
2009	35.34	60	23.68	40	59.02	69.50	1.16	
2010	63.34	64	35.74	36	99.08	108.10	0.94	
2011	66.87	60	44.86	40	111.73	118.64	0.48	
2012	67.86	59	47.48	41	115.34	125.53	0.44	
Western GOA	1990	72.20	85	13.13	15	85.33	65.48	0.74
	1991	71.95	94	4.29	6	76.24	56.67	0.32
	1992	59.73	82	13.15	18	72.87	51.80	0.74
	1993	37.90	95	1.88	5	39.78	41.25	0.18
	1994	24.88	77	7.32	23	32.20	36.67	0.15
	1995	35.68	80	8.99	20	44.67	44.24	0.20
	1996	35.28	73	12.92	27	48.20	41.56	0.29
	1997	47.34	71	19.55	29	66.88	62.89	0.37
	1998	39.98	69	18.06	31	58.04	60.11	0.08
	1999	39.73	65	21.16	35	60.90	65.12	0.04
	2000	33.73	55	27.90	45	61.63	60.64	0.07
	2001	23.02	54	19.97	46	42.99	53.81	0.03
	2002	26.32	55	21.22	45	47.54	49.52	0.07
	2003	17.55	40	25.93	60	43.48	45.40	0.07
	2004	17.11	38	28.16	62	45.27	49.85	0.05
	2005	16.49	43	22.29	57	38.77	46.11	0.05
	2006	11.23	29	27.74	71	38.96	59.21	0.07
	2007	15.83	42	22.31	58	38.14	59.21	0.05
	2008	21.53	50	21.47	50	43.00	57.17	0.06
2009	17.11	40	23.24	60	40.35	47.50	0.10	
2010	26.00	44	33.16	56	59.16	61.00	0.36	
2011	28.42	44	36.63	56	65.05	66.98	0.10	
2012	31.18	55	25.59	45	56.77	61.80	0.70	

Notes: Weights are reported in whole fish pounds. Discards at sea are excluded from all columns except the Discards at Sea column. State and federal harvests may not add to total due to rounding.

GOA = Gulf of Alaska, ABC = Acceptable Biological Catch, NMFS = National Marine Fisheries Service.



Table 4.—Kodiak Area Pacific cod harvest by gear type, during parallel Pacific cod seasons, 1997–2012.

Year	Gear Type				Total
	Pot	Longline	Trawl	Jig	
1997	8,500,650	1,894,214	857,688	527	11,253,078
1998	4,998,323	2,166,232	799,570	27,246	7,991,371
1999	8,176,521	2,579,782	1,226,554	27,963	12,010,819
2000	4,459,508	3,576,747	247,475	79,365	8,363,095
2001	2,800,868	2,283,509	213,454	22,414	5,320,245
2002	2,324,281	1,308,531	270,407	5,926	3,909,144
2003	3,104,572	2,699,156	428,503	16,045	6,248,277
2004	2,329,223	3,856,746	498,690	244,600	6,929,260
2005	3,890,960	3,507,804	366,751	298,326	8,063,841
2006	4,429,520	5,422,239	398,582	190,037	10,440,378
2007	5,018,241	3,409,233	150,583	68,583	8,646,640
2008	3,317,365	1,950,257	305,023	38,267	5,610,912
2009	2,741,107	2,907,995	139,002	70,971	5,859,075
2010	5,142,268	3,316,265	115,026	232,643	8,806,202
2011	7,804,342	4,746,357	108,124	1,081,094	13,739,917
2012	6,397,467	8,168,965	32,606	783,464	15,382,502

*Note:* Weights are reported in whole fish pounds. Discards at sea are excluded.

Table 5.—Chignik Area state waters Pacific cod harvest by gear type, during parallel Pacific cod seasons, 1997–2012.

Year	Gear Type				Total
	Pot	Longline	Trawl	Jig	
1997	Confidential - All Gear Types				555,718
1998	Confidential - All Gear Types				409,669
1999	Confidential - All Gear Types				852,408
2000	Confidential - All Gear Types				426,788
2001	Confidential - All Gear Types				135,999
2002	Confidential - All Gear Types				264,836
2003	Confidential - All Gear Types				211,531
2004	Confidential - All Gear Types				157,008
2005	Confidential - All Gear Types				62,891
2006	Confidential - All Gear Types				62,324
2007	Confidential - All Gear Types				38,500
2008	Confidential - All Gear Types				175,908
2009	239,584	45,136	0	0	284,720
2010	564,567	Confidential	0	0	564,567
2011	258,963	70,197	Confidential	Confidential	329,160
2012	Confidential	10,763	37,626	39,356	87,745

*Note:* Weights are in reported whole fish pounds. Discards at sea are excluded. Data are confidential in cases where fewer than 3 vessels participated. Confidential data included in total 1997-2008, not included in total 2010-2012.

Table 6.—South Alaska Peninsula Area Pacific cod harvest by gear type, during parallel Pacific cod seasons, 1997–2012.

Year	Gear Type				Total
	Pot	Longline	Trawl	Jig	
1997	2,068,400	32,625	7,758,378	Confidential	9,867,336
1998	4,205,388	522,328	3,867,782	Confidential	8,596,111
1999	3,279,793	33,718	5,308,250	0	8,621,761
2000	5,699,112	232,219	6,698,838	11,499	12,641,669
2001	3,272,010	52,169	2,424,221	340,092	6,088,493
2002	6,051,920	30,128	666,876	410,586	7,159,510
2003	12,966,344	57,549	310,013	92,528	13,426,433
2004	12,887,904	29,004	945,983	397,922	14,260,813
2005	6,175,670	562,770	2,835,871	101,375	9,675,687
2006	9,286,910	228,880	6,366,015	Confidential	15,883,274
2007	6,559,997	424,651	2,483,748	3,745	9,472,140
2008	6,387,463	623,306	863,671	114,599	7,989,039
2009	8,054,281	2,302,215	654,176	417,515	11,428,188
2010	13,229,552	1,600,965	1,691,696	763,299	17,285,512
2011	17,487,423	370,627	765,222	503,458	19,126,729
2012	5,720,700	357,719	2,761,687	567,920	9,408,026

*Note:* Weights are reported in whole fish pounds. Discards at sea are excluded. Data are confidential in cases where fewer than 3 vessels participated. Total whole fish pounds do not include confidential data.

Table 7.–Regulatory development of the state-waters and parallel Pacific cod seasons in the Kodiak, Chignik, and South Alaska Peninsula areas.

YEAR	REGULATION
1996	<ul style="list-style-type: none"> <li>● Alaska Board of Fisheries adopts state-waters Pacific cod management plans for Kodiak, Chignik, and South Alaska Peninsula (SAP) areas.</li> <li>● All areas established as exclusive registration.</li> <li>● Gear restricted to mechanical jigging machines (5 machines), hand troll (5 lines), or pots (60 pots).</li> <li>● Kodiak and SAP open 14 days after federal closure; Chignik opens April 15.</li> <li>● Vessel size restricted to 58' in Chignik and SAP.</li> <li>● Jig/pot allocation (50:50) in Kodiak; no allocation by gear type in Chignik or SAP.</li> <li>● Gear allocation rollover September 1 in Kodiak. Gear limits and exclusive registration may be removed October 31 in all areas; vessel size limits may be removed October 31 for Chignik and SAP.</li> </ul>
1997	<ul style="list-style-type: none"> <li>● Prosecution of the first state-waters Pacific cod fishery in Kodiak, Chignik and SAP areas.</li> </ul>
1998	<ul style="list-style-type: none"> <li>● Kodiak and SAP change opening date to 7 days after federal closure</li> <li>● Chignik opening date changed to April 1</li> <li>● SAP adopts gear allocation rollover September 1.</li> <li>● SAP caps pot harvest at 85% of the guideline harvest level (GHL).</li> </ul>
1999	<ul style="list-style-type: none"> <li>● Chignik opening date changed to April 15.</li> <li>● Chignik GHL allocation (jig/pot) established at 15% jig and 85% pot</li> <li>● Chignik adopts gear allocation rollover on August 15.</li> <li>● Chignik Area changed to superexclusive registration.</li> <li>● Kodiak adopts large vessel (&gt; 58') cap of 25% of GHL prior to September 1.</li> </ul>
2001	<ul style="list-style-type: none"> <li>● State regulation adopted recognizing Steller sea lion haulouts during parallel Pacific cod, walleye pollock and Atka mackerel seasons.</li> </ul>
2002	<ul style="list-style-type: none"> <li>● Vessel monitoring system (VMS) rules implemented during parallel Pacific cod, walleye pollock, and Atka mackerel seasons.</li> <li>● Pot storage requirement liberalized in Kodiak and Chignik areas for transition between parallel and state-waters seasons.</li> <li>● Chignik opening date changed to March 1.</li> </ul>
2004	<ul style="list-style-type: none"> <li>● Pot storage liberalized in SAP Area for transition between parallel and state-waters seasons.</li> </ul>
2005	<ul style="list-style-type: none"> <li>● Chignik allocation (jig/pot) allocation changed in Chignik (10:90).</li> </ul>
2007	<ul style="list-style-type: none"> <li>● SAP adopts 24-hour weather delay prior to fishery opening.</li> <li>● SAP mandatory inseason catch reporting by vessels.</li> <li>● SAP Area registration requirements changed, prohibiting fishing in another groundfish fishery outside of SAP and a portion of the Chingik Area.</li> </ul>
2010	<ul style="list-style-type: none"> <li>● SAP adopts 58' vessel size limit for parallel Pacific cod fishery</li> </ul>
2011	<ul style="list-style-type: none"> <li>● Chignik adopts 58' vessel size limit for parallel Pacific cod fishery</li> <li>● Coordinate Kodiak, Chignik, SAP state-waters Pacific cod management plans to accommodate federal Pacific cod gear sector allocations.</li> </ul>

-continued-

Table 7.–Page 2 of 2.

YEAR	REGULATION
2012	<ul style="list-style-type: none"> <li data-bbox="321 296 1409 401">● Kodiak state-waters Pacific cod season for pot gear opens 7 days after closure of the federal Central Gulf of Alaska (CGOA) pot sector A season. Jig season opens 48 hours after federal CGOA jig A season closes.</li> <li data-bbox="321 415 1409 478">● Chignik state-waters Pacific cod pot gear season opens 7 days after closure of the federal CGOA pot sector A season, or March 7 whichever is later.</li> <li data-bbox="321 493 1409 556">● SAP state-waters Pacific cod pot gear season opens 7 days after closure of the federal WGOA pot sector A season, or March 7 whichever is later, unless delayed by weather.</li> <li data-bbox="321 571 1409 638">● Kodiak, Chignik and SAP jig seasons will close June 8 or later to allow federal jig 'B' season to open, based on inseason assessment of effort, harvest rate, or remaining quota.</li> </ul>

Table 8.—Harvest, effort, and value from Kodiak, Chignik, and South Alaska Peninsula areas state-waters Pacific cod seasons, 2000–2012.

Year	Vessels	Landings	GHL <sup>a</sup>	Pounds	Price Per		
				Harvested <sup>b</sup>	Pound <sup>c</sup>	Fishery Value <sup>d</sup>	
<b>Kodiak Area</b>							
2000	204	1,707	12.0	8,562,816	\$0.39	\$3,335,844	
2001	103	669	10.6	4,843,741	\$0.34	\$1,638,642	
2002	82	552	8.7	8,825,851	\$0.29	\$2,556,887	
2003	128	837	8.0	8,154,867	\$0.33	\$2,685,922	
2004	156	1,122	9.9	10,033,889	\$0.31	\$3,102,824	
2005	158	1,011	9.1	8,548,163	\$0.32	\$2,734,882	
2006	113	646	10.4	6,330,518	\$0.42	\$2,657,285	
2007	95	643	10.4	6,406,965	\$0.51	\$3,278,695	
2008	111	988	10.4	10,548,875	\$0.59	\$6,217,710	
2009	130	971	8.7	8,591,477	\$0.32	\$2,233,575	
2010	114	880	13.5	13,566,306	\$0.28	\$3,796,186	
2011	161	1,165	14.8	15,267,869	\$0.35	\$4,116,248	
2012	180	1,354	15.7	15,391,019	\$0.38	\$5,850,754	
<b>Chignik Area</b>							
2000	25	163	6.7	1,794,759	\$0.30	\$538,414	
2001	26	179	6.0	2,648,655	\$0.26	\$688,645	
2002	25	199	4.9	4,227,547	\$0.20	\$832,946	
2003	28	257	4.5	4,467,571	\$0.27	\$1,206,244	
2004	28	297	5.8	5,750,461	\$0.23	\$1,322,156	
2005	22	248	6.4	5,787,467	\$0.25	\$1,446,687	
2006	12	202	7.3	3,439,521	\$0.34	\$1,169,437	
2007	16	242	7.3	5,699,461	\$0.45	\$2,564,576	
2008	23	262	7.3	6,838,934	\$0.56	\$3,829,803	
2009	12	123	6.1	5,681,230	\$0.24	\$1,363,034	
2010	16	160	9.5	9,153,719	\$0.24	\$2,195,007	
2011	32	244	10.4	10,346,856	\$0.32	\$3,115,384	
2012	25	202	11.0	10,473,154	\$0.35	\$3,693,380	
<b>South Alaska Peninsula Area</b>							
2000	90	650	15.1	15,044,104	\$0.30	\$4,476,218	
2001	121	727	13.4	13,464,020	\$0.25	\$3,362,729	
2002	107	598	12.4	12,716,258	\$0.22	\$2,792,697	
2003	92	604	11.4	11,560,663	\$0.27	\$3,117,330	
2004	88	595	12.5	12,514,240	\$0.23	\$2,869,261	
2005	73	528	11.5	11,436,172	\$0.25	\$2,846,795	
2006	54	386	14.8	11,739,736	\$0.36	\$4,215,888	
2007	60	465	14.8	12,678,151	\$0.47	\$5,940,742	
2008	97	700	14.3	13,302,050	\$0.57	\$7,547,258	
2009	72	514	11.9	11,594,124	\$0.26	\$3,011,443	
2010	69	534	15.3	15,288,266	\$0.25	\$3,877,227	
2011	82	551	16.7	16,806,305	\$0.30	\$4,905,994	
2012	95	644	15.5	15,356,768	\$0.34	\$5,201,332	

-continued-

Table 8.–Page 2 of 2.

	Year	Vessels	Landings	GHL <sup>a</sup>	Pounds Harvested <sup>b</sup>	Price Per Pound <sup>c</sup>	Fishery Value <sup>d</sup>
<b>Total</b>							
	2000	314	2,519	33.8	25,401,678	\$0.33	\$8,350,476
	2001	246	1,574	30.0	20,956,415	\$0.27	\$5,690,016
	2002	209	1,348	26.0	25,769,656	\$0.23	\$6,182,531
	2003	248	1,698	23.9	24,183,101	\$0.28	\$7,009,496
	2004	272	2,014	28.2	28,298,589	\$0.26	\$7,294,241
	2005	253	1,787	27.0	25,771,801	\$0.27	\$7,028,363
	2006	180	1,234	32.5	21,509,775	\$0.37	\$8,042,610
	2007	232	1,348	32.5	24,817,369	\$0.47	\$11,784,013
	2008	230	1,939	32.0	30,671,115	\$0.57	\$17,594,770
	2009	213	1,608	26.7	25,866,831	\$0.27	\$6,608,052
	2010	199	1,574	38.3	38,008,291	\$0.26	\$9,868,420
	2011	275	1,959	41.9	42,421,030	\$0.32	\$12,137,626
	2012	300	2,200	42.2	41,220,940	\$0.36	\$14,745,466

*Note:* Weights are in whole fish pounds. Discards at sea are excluded. Totals by area may not match number of vessels by gear type in Tables 10, 12, and 16 because a vessel may have used more than one gear type.

<sup>a</sup> GHL = guideline harvest level (millions of pounds).

<sup>b</sup> Pounds harvested for Chignik exclude jig harvest in 2006 and 2008 due to confidentiality; jig vessel numbers and jig landing data are also excluded for these years.

<sup>c</sup> Price per pound calculated from whole fish pounds sold excluding bait and meal.

<sup>d</sup> Value calculated by multiplying pounds of sold product (not pounds harvested) by price per pound.

Table 9.–Kodiak Area state-waters Pacific cod season openings by gear type, 1997–2012.

	Pot Gear	Jig Gear
<b>1997</b>	<b><i>Fishery Dates:</i></b> April 4 - May 4 September 1 - September 30 October 28 - December 31 <b><i>Management Actions:</i></b> September 1 - reopened to pot gear October 31 allocation rollover - gear limits, exclusive registration area lifted.	April 4 - December 31 October 28- December 31
<b>1998</b>	<b><i>Fishery Dates:</i></b> March 17 - April 27 September 1 - December 31 <b><i>Management Actions:</i></b> September 1 - reopened to pot gear October 31 vessel size limit - gear limits, exclusive registration area lifted.	March 17 - December 31
<b>1999</b>	<b><i>Fishery Dates:</i></b> March 21 - April 29 October 5 - December 31 <b><i>Management Actions:</i></b> October 6 - reopen to pot gear. (following CGOA opening) October 31 - gear limits lifted, exclusive registration area lifted.	March 21 - August 31 October 6 - December 31
<b>2000</b>	<b><i>Fishery Dates:</i></b> March 11 - December 31 <b><i>Management Actions:</i></b> October 31 - limits on pots, jigs, and vessel size removed, exclusive registration area lifted.	March 11 - December 31
<b>2001</b>	<b><i>Fishery Dates:</i></b> March 11 - December 31 <b><i>Management Actions:</i></b> September 1 - reopen to pot gear. October 31 - limits on pots, jigs, and vessel size removed, exclusive registration area lifted.	March 11 - December 31
<b>2002</b>	<b><i>Fishery Dates:</i></b> March 16 - May 4 September 1 - December 31 <b><i>Management Actions:</i></b> September 1 - reopen to pot gear. October 31 - limits on pots, jigs, and vessel size removed, exclusive registration area lifted.	March 16 - December 31
<b>2003</b>	<b><i>Fishery Dates:</i></b> February 16 - March 2 <b><i>Management Actions:</i></b> Fishery closed when GHL allocations were attained.	February 16 - May 9
<b>2004</b>	<b><i>Fishery Dates:</i></b> February 7 - February 22 <b><i>Management Actions:</i></b> Fishery closed when GHL allocations were attained.	February 7 - April 20

-continued-



Table 9.–Page 2 of 2.

	Pot Gear	Jig Gear
<b>2005</b>	<b><i>Fishery Dates:</i></b> February 2 - February 13 <b><i>Management Actions:</i></b> Fishery closed when GHL allocations were attained.	February 2 - April 21
<b>2006</b>	<b><i>Fishery Dates:</i></b> March 7 - March 29 <b><i>Management Actions:</i></b> Pot gear closed when GHL was attained. Jig season closed on 9/1 for parallel season (B-season).	March 7 - September 1
<b>2007</b>	<b><i>Fishery Dates:</i></b> March 6 - April 8 <b><i>Management Actions:</i></b> Pot gear closed when GHL was attained. Jig season closed on 9/1 for parallel season (B-season).	March 6 - September 1
<b>2008</b>	<b><i>Fishery Dates:</i></b> February 27 - March 26 October 5 - November 22 <b><i>Management Actions:</i></b> Pot gear closed when GHL was attained. Jig season closed on 9/1 for parallel season (B-season). October 5 - reopen to pot and jig gear (following federal CGOA closure).	February 27 - September 1 October 5 - November 22
<b>2009</b>	<b><i>Fishery Dates:</i></b> February 3 - February 18 <b><i>Management Actions:</i></b> Pot gear closed when GHL was attained. Jig season closed on 9/1 for parallel season (B-season). October 3 - reopen to jig gear (following federal CGOA closure).	February 3 - September 1 October 3 - December 31
<b>2010</b>	<b><i>Fishery Dates:</i></b> February 7 - February 23 <b><i>Management Actions:</i></b> Pot gear closed when GHL was attained. Jig season closed when GHL was attained.	February 7 - June 5
<b>2011</b>	<b><i>Fishery Dates:</i></b> February 5 - February 18 <b><i>Management Actions:</i></b> Pot gear closed when GHL was attained. Jig season closed when GHL was attained.	February 5 - April 14
<b>2012</b>	<b><i>Fishery Dates:</i></b> February 17 - March 1 <b><i>Management Actions:</i></b> Pot gear closed when GHL was attained. Jig season closed when GHL was attained. October 12 - reopen to jig gear following closure of CGOA B season.	March 8 - May 23 October 12 - December 31

*Note:* GHL = guideline harvest level.  
CGOA = Central Gulf of Alaska.

Table 10.—Kodiak Area state-waters Pacific cod harvest and effort by gear type, 1997–2012.

Year	Gear	GHL <sup>a</sup>	Vessels	Landings	Pounds	Price Per Pound <sup>b</sup>
1997	Jig	4.25	73	482	1,978,772	\$0.23
	Pot	4.25	40	232	5,580,372	\$0.22
1998	Jig	4.05	91	661	2,112,817	\$0.23
	Pot	4.05	49	310	6,070,140	\$0.22
1999 <sup>c</sup>	Jig	5.85	118	793	2,294,837	\$0.38
	Pot	5.85	79	462	8,400,138	\$0.32
2000	Jig	6.00	143	1,226	2,814,481	\$0.40
	Pot	6.00	69	481	5,748,334	\$0.39
2001	Jig	5.30	69	433	1,252,692	\$0.36
	Pot	5.30	34	236	3,591,049	\$0.33
2002	Jig	4.35	51	340	1,389,838	\$0.28
	Pot	4.35	33	212	7,436,013	\$0.29
2003	Jig	4.00	102	688	3,195,605	\$0.35
	Pot	4.00	42	149	4,959,262	\$0.32
2004	Jig	4.95	124	961	4,210,284	\$0.34
	Pot	4.95	47	161	5,823,605	\$0.29
2005	Jig	4.56	122	849	4,570,327	\$0.33
	Pot	4.56	51	162	3,977,835	\$0.30
2006	Jig	5.21	79	477	1,446,881	\$0.43
	Pot	5.21	41	169	4,883,637	\$0.41
2007	Jig	5.21	63	457	1,249,753	\$0.52
	Pot	5.21	33	182	5,157,212	\$0.50
2008	Jig	5.22	76	647	2,042,082 <sup>d</sup>	\$0.61
	Pot	5.22	37	341	8,506,792 <sup>d</sup>	\$0.59
2009	Jig	4.35	94	833	4,450,217	\$0.32
	Pot	4.35	38	138	4,141,054	\$0.32
2010	Jig	6.75	81	707	6,504,733	\$0.30
	Pot	6.75	36	173	7,061,573	\$0.25
2011	Jig	7.41	132	975	7,135,212	\$0.35
	Pot	7.41	46	190	8,132,657	\$0.35
2012	Jig	7.85	145	1,159	7,936,707	\$0.38
	Pot	7.85	46	195	7,454,312	\$0.38

Note: Weights are reported in whole fish pounds. Discards at sea are excluded.

<sup>a</sup> GHL = guideline harvest level (millions of pounds).

<sup>b</sup> Price per pound calculated from whole fish pounds sold excluding bait and meal.

<sup>c</sup> Beginning in 1999, vessels > 58' using pot gear were capped at 25% of the total GHL.

<sup>d</sup> Pot harvest prior to the allocation rollover (September 1) was 5.42 million pounds. Jig harvest prior to the allocation rollover was 1.98 million pounds.

Table 11.—Pacific cod harvest and effort by statistical area from the Kodiak Area state-waters season, 2012.

Statistical Area	Pounds	Vessels	Landings <sup>a</sup>
515801	64,309	4	4
525701	1,592,401	71	180
525703	913,577	21	42
525731	620,499	46	109
525733	1,246,490	96	273
525802	368,806	11	19
525803	73,135	4	4
525805	51,942	9	14
525806	427,521	19	34
525834	309,673	4	8
535631	416,379	20	42
535634	903,332	21	56
535703	414,736	16	49
535705	530,470	5	11
535706	7,962	4	5
535732	2,033,547	74	219
535733	421,606	29	68
535734	64,895	10	15
535803	684,391	38	59
545632	1,331,164	28	114
545633	161,139	4	7
545701	726,228	3	10
545733	44,438	3	3
545734	818,464	36	74
545803	332,978	3	7
Other <sup>b</sup>	830,936	9	22
Total	15,391,019	180	1,354

*Note:* Weights are reported in whole fish pounds. Discards at sea are excluded.

<sup>a</sup> Some landings involve multiple statistical areas.

<sup>b</sup> A total of 6 statistical areas were combined due to confidentiality.

Table 12.–Chignik Area state-waters Pacific cod season openings by gear type, 1997–2012.

	Pot Gear	Jig Gear
<b>1997</b>	<b><i>Fishery Dates:</i></b> April 15 - June 15 August 1 - September 30 October 28 - December 31 <b><i>Management Actions:</i></b> October 31 allocation rollover - vessel size limit, gear limits, exclusive registration area lifted.	April 15 - June 15 August 1 - September 30 October 28 - December 31
<b>1998</b>	<b><i>Fishery Dates:</i></b> April 1 - April 26  <b><i>Management Actions:</i></b> May 20 reopened to jig gear. October 31 allocation rollover - gear limits lifted.	April 1 - April 26 May 20 - December 31
<b>1999</b>	<b><i>Fishery Dates:</i></b> April 15 - September 1 October 5 - December 31 <b><i>Management Actions:</i></b> October 31 allocation rollover - limits on number of pots, jigs, and vessel size removed.	April 21 - September 1 October 5 - December 31
<b>2000</b>	<b><i>Fishery Dates:</i></b> April 15 - December 31 <b><i>Management Actions:</i></b> October 31 - limits on number of pots, jigs, and vessel size removed.	April 15 - December 31
<b>2001</b>	<b><i>Fishery Dates:</i></b> March 11 - December 31 <b><i>Management Actions:</i></b> October 31 - limits on number of pots, jigs, and vessel size removed.	March 11 - December 31
<b>2002</b>	<b><i>Fishery Dates:</i></b> March 1 - December 31 <b><i>Management Actions:</i></b> October 31 - limits on number of pots, jigs, and vessel size removed.	March 1 - December 31
<b>2003</b>	<b><i>Fishery Dates:</i></b> March 1 - April 11 <b><i>Management Actions:</i></b> Fishery closed when GHJ allocations were attained.	March 1 - June 4
<b>2004</b>	<b><i>Fishery Dates:</i></b> March 1 - May 13 <b><i>Management Actions:</i></b> August 15 jig GHJ rollover - jig quota harvestable by either jig or pot gear. October 31 - limits on number of pots, jigs, and vessel size removed.	March 1 - December 31
<b>2005</b>	<b><i>Fishery Dates:</i></b> March 1 - May 10 <b><i>Management Actions:</i></b> August 15 jig GHJ rollover - jig quota harvestable by either jig or pot gear October 31 - limits on number of pots, jigs, and vessel size removed.	March 1 - December 31

-continued-

Table 12.–Page 2 of 2.

	Pot Gear	Jig Gear
<b>2006</b>	<b><i>Fishery Dates:</i></b> March 1 - September 1	March 1 - September 1
	<b><i>Management Actions:</i></b> August 15 jig GHL rollover - jig quota harvestable by either jig or pot gear September 1 - state-waters season (jig and pot) closed and parallel season opened.	
<b>2007</b>	<b><i>Fishery Dates:</i></b> March 1 - September 1	March 1 - September 1
	<b><i>Management Actions:</i></b> August 15 jig GHL rollover - jig quota harvestable by either jig or pot gear. September 1 - state-waters season (jig and pot) closed and parallel season opened.	
<b>2008</b>	<b><i>Fishery Dates:</i></b> March 1 - April 17 October 5 - December 31	March 1 - September 1 October 5 - December 31
	<b><i>Management Actions:</i></b> August 15 jig GHL rollover - jig quota harvestable by either jig or pot gear. September 1 - state-waters season (jig and pot) closed and parallel season opened. October 5 - reopen to pot and jig gear after federal CGOA closure. November 4 - Vessel size limits and gear limits removed.	
<b>2009</b>	<b><i>Fishery Dates:</i></b> March 1 - April 8 October 3 - December 31	March 1 - September 1 October 3 - December 31
	<b><i>Management Actions:</i></b> August 15 jig GHL rollover - jig quota harvestable by either jig or pot gear. September 1 - state-waters season (jig and pot) closed and parallel season opened. October 3 - reopen to pot and jig gear after federal CGOA closure.	
<b>2010</b>	<b><i>Fishery Dates:</i></b> March 1 - April 6 September 13 - December 31	March 1 - September 1 September 13 - December 31
	<b><i>Management Actions:</i></b> August 15 - jig GHL rollover; jig quota harvestable by either jig or pot gear. September 1 - state-waters season (jig and pot) closed and parallel season opened. September 13 - reopen to pot and jig gear after federal CGOA closure.	
<b>2011</b>	<b><i>Fishery Dates:</i></b> March 1 - March 17 October 9 - December 31	March 1 - September 1 October 9 - December 31
	<b><i>Management Actions:</i></b> August 15 - jig GHL rollover; jig quota harvestable by either jig or pot gear. September 1 - state-waters season (jig and pot) closed and parallel season opened. October 9 - reopen to pot and jig gear after federal CGOA closure.	
<b>2012</b>	<b><i>Fishery Dates:</i></b> March 7 - March 28 October 12 - December 31	March 15 - June 10 June 29 - December 31
	<b><i>Management Actions:</i></b> Pot gear season closed when GHL attained. June 29 - reopen to jig gear after federal CGOA jig B season closure. October 12 - reopen to pot and jig gear after CGOA pot B season closure.	

*Note:* GHL = guideline harvest level.  
CGOA = Central Gulf of Alaska.

Table 13.—Chignik Area state-waters Pacific cod harvest and effort by gear type, 1997–2012.

Year	Gear	GHL <sup>a</sup>	Vessels	Landings	Pounds	Price Per Pound <sup>b</sup>
1997	Jig	2.95	4	14	35,002	\$0.18
	Pot	2.95	10	60	1,098,970	\$0.18
1998	Jig	2.85	11	59	167,283	\$0.18
	Pot	2.85	44	236	5,440,796	\$0.17
1999	Jig	4.10	11	56	218,408	\$0.32
	Pot	4.10	32	396	6,207,176	\$0.29
2000	Jig	1.01	5	12	38,453	\$0.35
	Pot	5.70	20	151	1,756,305	\$0.30
2001	Jig	0.90	13	55	277,411	\$0.27
	Pot	5.10	15	124	2,371,243	\$0.26
2002	Jig	0.74	14	60	324,227	\$0.20
	Pot	4.17	12	139	3,903,320	\$0.20
2003	Jig	0.68	16	106	433,067	\$0.28
	Pot	3.83	15	151	4,034,504	\$0.26
2004	Jig	1.10	14	53	141,697	\$0.24
	Pot	5.80	17	244	5,608,763	\$0.23
2005	Jig	0.63	8	42	136,872	\$0.24
	Pot	5.75	15	206	5,650,595	\$0.25
2006	Jig	0.73	1	2	Confidential	Confidential
	Pot	6.57	12	202	3,439,521	\$0.34
2007	Jig	0.73	0	0	0	\$0.00
	Pot	6.57	16	241	5,700,861	\$0.45
2008	Jig	0.73	2	3	Confidential	Confidential
	Pot	6.58	23	262	6,838,934 <sup>c</sup>	\$0.56
2009	Jig	0.61	1	1	Confidential	Confidential
	Pot	5.47	11	122	5,679,678	\$0.24
2010	Jig	0.95	1	20	Confidential	Confidential
	Pot	8.51	16	160	9,153,719 <sup>d</sup>	\$0.24
2011	Jig	1.04	10	45	224,400	\$0.32
	Pot	9.34	23	199	10,122,456	\$0.32
2012	Jig	1.1	5	13	243,185	\$0.35
	Pot	9.88	20	189	10,229,969	\$0.35

Note: Weights are in whole fish pounds. Discards at sea are excluded. Data are confidential in cases where fewer than 3 vessels participated.

<sup>a</sup> GHL = guideline harvest level (millions of pounds).

<sup>b</sup> Price per pound calculated from whole fish pounds sold excluding bait and meal.

<sup>c</sup> Pot harvest prior to the allocation rollover (August 15) was 6.69 million pounds.

<sup>d</sup> Pot harvest prior to the allocation rollover (August 15) was 8.49 million pounds.

Table 14.—Pacific cod harvest and effort by statistical area from the Chignik Area state-waters season, 2012.

Statistical Area	Pounds	Vessels	Landings <sup>a</sup>
565602	2,757,635	5	29
565633	1,811,371	3	33
575635	646,335	3	11
585531	3,140,341	8	56
585601	455,329	4	32
595531	814,132	8	36
Other <sup>b</sup>	848,011	5	17
<b>Total</b>	<b>10,473,154</b>	<b>25</b>	<b>202</b>

*Note:* Weights are in whole fish pounds. Discards at sea are excluded.

<sup>a</sup> Some landings involve multiple statistical areas.

<sup>b</sup> Total of 4 statistical area combined due to confidentiality.

Table 15.–South Alaska Peninsula Area state-waters Pacific cod season openings by gear type, 1997–2012.

	<b>Pot Gear</b>	<b>Jig Gear</b>
<b>1997</b>	<i><b>Fishery Dates:</b></i> April 4 - December 22 <i><b>Management Actions:</b></i> October 31 allocation rollover - vessel size limit, gear limits, exclusive registration recinded.	April 4 - December 22
<b>1998</b>	<i><b>Fishery Dates:</b></i> March 10 - April 14 <i><b>Management Actions:</b></i> October 31 allocation rollover - No action; federal WGOA reopened October 9 - December 31.	March 10 - October 9
<b>1999</b>	<i><b>Fishery Dates:</b></i> March 15 - April 11 October 31- December 31 <i><b>Management Actions:</b></i> October 31 allocation rollover - Reopened to pot gear. November 10 - Gear limits recinded.	March 15 - December 31
<b>2000</b>	<i><b>Fishery Dates:</b></i> March 11 - April 8 <i><b>Management Actions:</b></i> Fishery closed when GHL allocations were attained.	March 11 - September 19
<b>2001</b>	<i><b>Fishery Dates:</b></i> March 6 - April 13 <i><b>Management Actions:</b></i> Fishery closed when GHL allocations were attained.	March 6 - June 12
<b>2002</b>	<i><b>Fishery Dates:</b></i> March 5 - March 24 <i><b>Management Actions:</b></i> Fishery closed when GHL allocations were attained.	March 5 - April 26
<b>2003</b>	<i><b>Fishery Dates:</b></i> February 24 - March 11 <i><b>Management Actions:</b></i> Fishery closed when GHL allocations were attained.	February 24 - April 22
<b>2004</b>	<i><b>Fishery Dates:</b></i> March 2 - March 24 <i><b>Management Actions:</b></i> Fishery closed when GHL allocations were attained.	March 2 - April 14
<b>2005</b>	<i><b>Fishery Dates:</b></i> March 3 - March 24 <i><b>Management Actions:</b></i> Pot fishery closed when GHL allocation was attained. Jig fishery closed August 31, parallel portion of WGOA reopened September 1 - December 31.	March 3 - August 31
<b>2006</b>	<i><b>Fishery Dates:</b></i> March 9 - March 29 April 4 - April 8 <i><b>Management Actions:</b></i> Pot fishery closed when GHL allocation was attained. Jig fishery closed August 31, parallel portion of WGOA reopened September 1 - December 31.	March 9 - September 1

-continued-



Table 15.–Page 2 of 2.

	<b>Pot Gear</b>	<b>Jig Gear</b>
<b>2007</b>	<p><b><i>Fishery Dates:</i></b> March 15 - April 17</p> <p><b><i>Management Actions:</i></b> Pot fishery closed when GHL allocation was attained. Jig fishery closed August 31, parallel portion of WGOA reopened September 1 - December 31.</p>	<p>March 15 - September 1</p>
<b>2008</b>	<p><b><i>Fishery Dates:</i></b> March 7 - April 1</p> <p><b><i>Management Actions:</i></b> Pot fishery closed when GHL allocation was attained. Jig fishery closed August 31, parallel portion of WGOA reopened September 1 - December 31.</p>	<p>March 7 - September 1</p>
<b>2009</b>	<p><b><i>Fishery Dates:</i></b> March 4 - April 4</p> <p><b><i>Management Actions:</i></b> Pot fishery closed when GHL allocation was attained. Jig fishery closed August 31, parallel portion of WGOA reopened September 1 - December 31.</p>	<p>March 4 - September 1</p>
<b>2010</b>	<p><b><i>Fishery Dates:</i></b> March 5 - March 23</p> <p><b><i>Management Actions:</i></b> Pot fishery closed when GHL allocation was attained. Jig fishery closed when GHL was attained.</p>	<p>March 5 - May 27</p>
<b>2011</b>	<p><b><i>Fishery Dates:</i></b> February 25 - March 11</p> <p><b><i>Management Actions:</i></b> Pot fishery closed when GHL allocation was attained. Jig fishery closed when GHL was attained.</p>	<p>February 25 - April 26</p>
<b>2012</b>	<p><b><i>Fishery Dates:</i></b> March 7 - March 22</p> <p><b><i>Management Actions:</i></b> Pot fishery closed when GHL allocation was attained. Jig season opened March 21 due to weather delay March 19 and 20.</p>	<p>March 21 - June 10</p>

*Note:* GHL = guideline harvest level.  
WGOA = Western Gulf of Alaska.

Table 16.—South Alaska Peninsula Area state-waters Pacific cod harvest and effort by gear type, 1997–2012.

Year	Gear	GHL <sup>a</sup>	Vessels	Landings	Pounds	Price Per Pound <sup>b</sup>
1997	Jig	4.70	45	178	349,468	\$0.17
	Pot	4.70	55	477	9,132,055	\$0.18
1998	Jig	1.35	28	124	437,708	\$0.16
	Pot	7.65	51	309	8,192,804	\$0.17
1999	Jig	1.95	27	166	706,952	\$0.29
	Pot	11.05	53	388	11,115,028	\$0.26
2000	Jig	2.28	28	145	757,953	\$0.28
	Pot	12.90	65	505	14,286,151	\$0.30
2001	Jig	2.01	69	417	3,402,427	\$0.24
	Pot	11.39	55	311	10,421,593	\$0.25
2002	Jig	1.86	66	322	2,046,686	\$0.24
	Pot	10.50	50	276	10,669,572	\$0.21
2003	Jig	1.80	65	413	3,633,007	\$0.27
	Pot	9.69	41	191	7,927,656	\$0.27
2004	Jig	1.90	51	317	1,671,461	\$0.24
	Pot	10.60	44	278	10,842,778	\$0.23
2005	Jig	1.73	39	261	1,229,832	\$0.25
	Pot	9.80	39	267	10,206,340	\$0.25
2006	Jig	2.22	12	36	99,552	\$0.36
	Pot	12.58	43	350	11,640,183	\$0.36
2007	Jig	2.22	14	59	254,178	\$0.47
	Pot	12.58	46	406	12,423,973	\$0.47
2008	Jig	2.14	52	310	1,401,011	\$0.57
	Pot	12.15	48	390	11,901,039	\$0.57
2009	Jig	1.78	26	185	1,093,382	\$0.23
	Pot	10.11	47	329	10,500,742	\$0.26
2010	Jig	2.29	34	294	2,315,081	\$0.25
	Pot	12.96	38	240	12,973,186	\$0.25
2011	Jig	2.51	42	271	2,443,043	\$0.28
	Pot	14.23	49	280	14,363,262	\$0.29
2012	Jig	2.32	48	345	1,989,884	\$0.34
	Pot	13.13	53	299	13,366,884	\$0.34

Note: Weights are reported in whole fish pounds. Discards at sea are excluded.

<sup>a</sup> GHL = guideline harvest level (millions of pounds).

<sup>b</sup> Price per pound calculated from whole fish pounds sold excluding bait and meal.

Table 17.—Pacific cod harvest and effort by statistical area from the South Alaska Peninsula Area state-waters season, 2012.

Statistical Area	Pounds	Vessels	Landings <sup>a</sup>
595503	645,542	8	22
605432	377,518	5	12
605501	310,268	14	20
605502	3,603,598	37	151
605504	1,455,671	42	180
605506	180,811	6	8
605507	149,054	15	25
615508	87,057	5	10
625401	2,281,942	11	47
625403	382,093	5	5
625431	382,939	6	20
625437	256,941	3	16
625501	215,564	7	36
635434	693,880	6	29
635436	918,593	6	24
665302	1,193,614	4	20
665332	750,107	5	13
Other <sup>b</sup>	1,471,575	20	44
	15,356,768	95	644

*Note:* Weights are reported in whole fish pounds. Discards at sea are excluded.

<sup>a</sup> Some landings include multiple statistical areas.

<sup>b</sup> Total of 16 statistical area combined due to confidentiality.

Table 18.—Kodiak Area black rockfish jig season harvest, effort and price per pound, 1990–2012.

Year <sup>a</sup>	Vessels	Landings	Directed GH L <sup>b</sup>	Pounds	Price Per Pound <sup>c</sup>
1990	2	8	-	Confidential	Confidential
1991	55	317	-	782,133	\$0.25
1992	34	167	-	476,623	\$0.24
1993	14	58	-	105,244	\$0.24
1994	23	126	-	116,724	\$0.37
1995	33	183	-	311,455	\$0.44
1996	43	167	-	301,798	\$0.46
1997	51	297	-	221,167	\$0.38
1998	64	348	190,000	196,548	\$0.33
1999	70	300	185,000	128,008	\$0.42
2000	72	260	185,000	245,891	\$0.44
2001	36	168	185,000	213,629	\$0.50
2002	25	123	185,000	196,166	\$0.43
2003	33	90	185,000	84,237	\$0.36
2004	37	124	185,000	122,180	\$0.39
2005	23	85	175,000	116,726	\$0.40
2006	25	97	175,000	123,443	\$0.42
2007	21	96	175,000	135,386	\$0.41
2008	17	91	175,000	132,325	\$0.53
2009	18	90	175,000	122,249	\$0.41
2010	12	74	175,000	103,630	\$0.39
2011	21	67	175,000	124,900	\$0.39
2012	19	53	135,000	80,940	\$0.41

*Note:* Weights are reported in whole fish pounds. Discards at sea are excluded. Data are confidential in 1990 because fewer than 3 vessels participated. GH Ls were not established prior to 1998 because black rockfish were managed with the federal pelagic shelf rockfish complex.

<sup>a</sup> From 1990 to 1997 black rockfish were federally managed. After 1997, the State of Alaska assumed management responsibility from 0–200 nmi. Only mechanical jig and hand troll are allowed for directed fishing.

<sup>b</sup> GH L = guideline harvest level.

<sup>c</sup> Price per pound calculated from whole fish pounds sold excluding bait and meal.

Table 19.—Chignik Area black rockfish jig season harvest, effort and price per pound, 1990–2012.

Year <sup>a</sup>	Vessels	Landings	Directed GHL <sup>b</sup>	Pounds	Price Per Pound <sup>c</sup>
1990	0	0	-	0	na
1991	0	0	-	0	na
1992	0	0	-	0	na
1993	0	0	-	0	na
1994	0	0	-	0	na
1995	5	6	-	25,125	\$0.49
1996	11	25	-	201,825	\$0.36
1997	9	39	-	80,741	\$0.23
1998	10	30	100,000	87,712	\$0.28
1999	10	30	100,000	11,305	\$0.25
2000	7	14	100,000	95,572	\$0.43
2001	13	33	100,000	102,316	\$0.41
2002	7	15	100,000	81,015	\$0.41
2003	10	40	100,000	46,598	\$0.42
2004	6	26	100,000	99,122	\$0.27
2005	7	16	100,000	49,721	\$0.40
2006	2	4	100,000	Confidential	Confidential
2007	2	7	100,000	Confidential	Confidential
2008	1	4	100,000	Confidential	Confidential
2009	2	2	100,000	Confidential	Confidential
2010	1	5	100,000	Confidential	Confidential
2011	1	1	100,000	Confidential	Confidential
2012	1	1	100,000	Confidential	Confidential

*Note:* Weights are reported in whole fish pounds. Discards at sea are excluded. Data are confidential in 1990 because fewer than 3 vessels participated. GHLS were not established prior to 1998 because black rockfish were managed with the federal pelagic shelf rockfish complex.

<sup>a</sup> From 1990 to 1997 black rockfish were federally managed. After 1997, the State of Alaska assumed management responsibility from 0–200 nmi. Only mechanical jig and hand troll gear allowed for directed fishing.

<sup>b</sup> GHL = guideline harvest level.

<sup>c</sup> Price per pound calculated from whole fish pounds sold excluding bait and meal.

Table 20.—South Alaska Peninsula Area Eastern District black rockfish jig season harvest, effort and price per pound, 1990–2012.

Year <sup>a</sup>	Vessels	Landings	Directed GHL <sup>b</sup>	Pounds	Price Per Pound <sup>c</sup>
1990	0	0	-	0	0
1991	1	1	-	Confidential	Confidential
1992	0	0	-	0	0
1993	0	0	-	0	0
1994	0	0	-	0	0
1995	8	49	-	120,745	\$0.33
1996	19	78	-	150,188	\$0.25
1997	9	32	-	109,076	\$0.34
1998	6	18	100,000	84,145	\$0.29
1999	9	38	100,000	55,308	\$0.41
2000	20	73	100,000	94,797	\$0.35
2001	30	82	100,000	101,605	\$0.36
2002	9	30	100,000	102,114	\$0.29
2003	4	6	100,000	5,267	\$0.21
2004	15	24	100,000	8,925	\$0.26
2005	11	26	100,000	57,732	\$0.35
2006	3	8	75,000	7,015	\$0.37
2007	2	9	75,000	Confidential	Confidential
2008	0	0	75,000	0	na
2009	3	3	75,000	705	\$0.25
2010	1	1	75,000	Confidential	Confidential
2011	1	2	75,000	Confidential	Confidential
2012	0	0	75,000	0	na

*Note:* Weights are reported in whole fish pounds. Discards at sea are excluded. Data are confidential in 1990 because fewer than 3 vessels participated. GHLS were not established prior to 1998 because black rockfish were managed with the federal pelagic shelf rockfish complex.

<sup>a</sup> From 1990 to 1997 black rockfish were federally managed. After 1997, the State of Alaska assumed management responsibility from 0–200 nmi. Only mechanical jig and hand troll gear allowed for directed fishing.

<sup>b</sup> GHL = guideline harvest level.

<sup>c</sup> Price per pound calculated from whole fish pounds sold excluding bait and meal.

Table 21.—Regulation development of the black rockfish fishery in the Kodiak, Chignik and South Alaska Peninsula areas.

YEAR	REGULATION
Pre-1997	<ul style="list-style-type: none"> <li>● Black rockfish managed by NMFS</li> </ul>
1997	<ul style="list-style-type: none"> <li>● NPFMC removes black rockfish from Pelagic Shelf Rockfish Group</li> <li>● State-waters managed separately from federal waters:               <ul style="list-style-type: none"> <li>○ Kodiak Area managed for 170,000 pounds</li> <li>○ Chignik Area managed for 100,000 pounds</li> <li>○ South Alaska Peninsula Eastern District managed for 100,000 pounds</li> </ul> </li> </ul>
1998	<ul style="list-style-type: none"> <li>● State receives management authority from NMFS for black rockfish in the Exclusive Economic Zone</li> <li>● Kodiak and Chignik areas and South Alaska Peninsula Eastern District established as non-exclusive registration</li> <li>● Kodiak Area divided into seven districts each with separate guideline harvest levels (GHL)</li> </ul>
1999	<ul style="list-style-type: none"> <li>● ADF&amp;G reduces the GHL for Northeast District of Kodiak Area from 25,000 pounds to 20,000 pounds</li> </ul>
2003	<ul style="list-style-type: none"> <li>● Kodiak Area requires specific black rockfish area registration</li> <li>● Kodiak Area trip limit of 5,000 pounds per 5 days</li> <li>● Chignik Area designated superexclusive registration</li> <li>● Chignik Area divided into 3 management districts; ADF&amp;G establishes an inseason GHL cap of 45,000 pounds from any one district</li> </ul>
2004	<ul style="list-style-type: none"> <li>● ADF&amp;G reduces the GHL for Westside District of Kodiak Area from 30,000 pounds to 20,000 pounds</li> </ul>
2005	<ul style="list-style-type: none"> <li>● South Alaska Peninsula Eastern District divided into 3 management sections, ADF&amp;G establishes an inseason GHL cap of 45,000 pounds from any one section</li> <li>● 2,500 pound "incidental" trip limit implemented for vessels fishing during other directed jig groundfish fisheries in Kodiak Area</li> <li>● Logbook made mandatory for Kodiak Area black rockfish</li> </ul>
2006	<ul style="list-style-type: none"> <li>● ADF&amp;G reduces the GHL in the South Alaska Peninsula Eastern District to 75,000 pounds and section caps removed</li> </ul>
2007	<ul style="list-style-type: none"> <li>● Incidental trip limit in Northeast, Afognak, and Southeast Districts reduced to 1,000 pounds</li> </ul>
2011	<ul style="list-style-type: none"> <li>● Kodiak Area Rockfish Management Plan revised               <ul style="list-style-type: none"> <li>○ Incidental trip limits repealed; replaced with bycatch percentages established by EO</li> </ul> </li> </ul>
2012	<ul style="list-style-type: none"> <li>● ADF&amp;G established Southwest and Mainland districts of the Kodiak Area as bycatch only, eliminating GHL.</li> </ul>

Table 22.—Jig and non-jig commercial harvest of black rockfish from the Kodiak, Chignik, and South Alaska Peninsula Eastern District, 1990–2012.

Year	Jig			Non-Jig			Total Pounds	Discards at Sea
	Vessels	Landings	Pounds	Vessels	Landings	Pounds		
1990	2	8	Confidential	9	35	61,713	Confidential	889
1991	56	318	Confidential	11	24	86,455	Confidential	66
1992	34	167	476,623	13	16	10,528	487,151	100
1993	14	58	105,244	12	22	2,767	108,011	332
1994	23	126	116,724	8	10	2,767	119,491	10,980
1995	40	238	457,325	15	17	4,336	461,661	3,660
1996	62	270	653,811	18	20	7,483	661,293	13,027
1997	64	366	410,984	20	22	3,970	414,954	750
1998	78	396	368,405	24	33	9,771	378,176	5
1999	89	368	194,621	24	39	4,244	198,864	3,615
2000	92	346	436,260	26	30	9,386	445,646	1,250
2001	68	278	417,549	20	29	7,862	425,411	5,005
2002	33	164	379,296	22	27	9,251	388,546	0
2003	47	136	136,102	24	25	5,119	141,221	44
2004	56	174	230,227	31	41	1,966	232,194	932
2005	40	127	224,179	22	25	1,298	225,478	4
2006	28	109	Confidential	28	36	29,347	Confidential	607
2007	22	112	243,172	63	139	34,758	277,930	220
2008	17	95	Confidential	30	52	5,118	Confidential	7,000
2009	21	95	136,272	23	30	1,033	137,305	310
2010	13	80	150,949	60	108	15,776	166,725	11,500
2011	23	70	142,176	65	116	14,401	156,577	15,233
2012	20	54	81,486	52	157	11,197	92,683	27,183

*Note:* Weights are reported in whole fish pounds. Discards at sea are excluded except from the discard at sea column. Prior to 1998, there were no guideline harvest levels (GHLs) established for black rockfish; black rockfish were managed as part of the federal Pelagic Shelf complex. Data in some years are confidential to maintain confidentiality in the individual area tables (Tables 18, 19, and 20).



Table 23.—Commercial jig harvest of black rockfish from Kodiak, Chignik, and South Alaska Peninsula areas by district, 2012.

Area/District	GHL <sup>a</sup>	Harvest <sup>b</sup>	Directed Fishery Closure Date	Pounds	
				Directed <sup>c</sup>	Other <sup>d</sup>
<b>Kodiak Area</b>					
Afognak	35,000	23,113	December 31	22,803	310
Northeast	20,000	17,148	March 9	16,495	654
Eastside	30,000	30,180	August 18	23,425	6,754
Southeast	30,000	9,762	December 31	1,977	7,785
Southwest	20,000	0	December 31	0	0
Westside	Bycatch only	737	December 31	0	737
Mainland	Bycatch only	0	December 31	0	0
Total	135,000	80,940		64,700	16,240
<b>Chignik Area</b>					
Sutwik Island	45,000	0	December 31	0	0
Chignik Bay	45,000	0	December 31	0	0
Mitrofanina	45,000	Confidential	December 31	0	Confidential
Total	100,000	Confidential		0	Confidential
<b>South Alaska Peninsula Area - Eastern District</b>					
Total	75,000	0	December 31	0	0

Note: Weights are in whole fish pounds. Discards at sea excluded.

<sup>a</sup> GHL = guideline harvest level.

<sup>b</sup> Total pounds of black rockfish harvested by jig gear.

<sup>c</sup> Total pounds of black rockfish harvested by jig gear in the directed black rockfish fishery.

<sup>d</sup> Total pounds of black rockfish harvested by jig gear as bycatch or as incidental harvest.

Table 24.—Lingcod harvest from Kodiak, Chignik, and South Alaska Peninsula areas, 1988–2012.

Year	Jig	Longline	Pot	Trawl	Total
1988	59	43	0	136,191	136,294
1989	69	0	0	14,324	14,394
1990	1,418	158	402	8,839	10,816
1991	8,375	501	386	663	9,925
1992	5,569	4,261	72	10,897	20,799
1993	0	511	0	4,778	5,289
1994	4,820	803	0	229	5,852
1995	34,574	3,467	79	1,191	39,311
1996	43,403	7,878	0	10,929	62,209
1997	12,637	6,499	4,251	5,267	28,654
1998	5,756	1,771	0	3,514	11,041
1999	1,358	3,802	4,189	4,593	13,941
2000	3,400	6,734	2,676	2,127	14,938
2001	527	4,063	3,597	5,688	13,875
2002	29	6,131	2,749	5,380	14,290
2003	229	9,740	0	5,069	15,037
2004	2,990	6,865	205	16,731	26,791
2005	772	18,831	7,983	14,078	41,663
2006	289	16,028	20,127	12,670	49,114
2007	35	28,058	32,024	45,420	105,538
2008	1,518	31,637	21,278	466,826	521,259
2009	373	28,112	3,614	65,182	97,281
2010	812	31,204	1,935	33,594	67,545
2011	123	25,045	14,962	82,323	122,454
2012	297	18,815	69,613	69,683	158,409

*Note:* Weights are reported in whole fish pounds. Discards at sea excluded.

Table 25.–Central and Western Gulf of Alaska walleye pollock fishery openings, 2008–2012.

NMFS Area	2008	2009	2010	2011	2012
Area 630	Jan 20 - Jan 22	Jan 20 - Jan 22	Jan 20 - Jan 22	Jan 20 - Jan 21	Jan 20 - Jan 23
	Mar 3 - Mar 4	Feb 11 - Feb 11	Feb 11 - Feb 11	Feb 28 - Mar 1	Feb 16 - Feb 25
	Mar 7 - May 31	Mar 9 - Mar 11	Mar 9 - Mar 11	Mar 7 - Mar 12	Mar 10 - Mar 10
	Aug 25 - Sep 4	Aug 25 - Aug 26	Aug 25 - Aug 26	Aug 25 - Aug 27	Mar 21 - Mar 24
	Oct 1 - Oct 6	Sep 29 - Oct 1	Sep 29 - Oct 1	Sep 4 - Sep 9	Aug 25 - Oct 20
	Oct 12 - Oct 14			Oct 1 - Nov 1	
Area 620	Jan 20 - Mar 26	Jan 20 - Mar 6	Jan 20 - Mar 6	Jan 20 - Feb 25	Jan 20 - Feb 27
	Aug 25 - Sep 6	Mar 10 - Mar 14	Mar 10 - Mar 14	Mar 10 - Mar 22	Mar 10 - Mar 17
	Oct 1 - Nov 1	Aug 25 - Aug 26	Aug 25 - Aug 26	Aug 25 - Sep 4	Aug 25 - Sep 18
		Sep 29 - Oct 4	Sep 29 - Oct 4	Oct 1 - Nov 1	Oct 24 - Nov 1
Area 610	Jan 20 - Jan 22	Jan 20 - Jan 22	Jan 20 - Jan 22	Jan 20 - Jan 23	Jan 20 - Mar 10
	Mar 3 - Mar 4	Mar 1 - Mar 3	Mar 1 - Mar 3	Feb 27 - Mar 28	Mar 10 - Apr 1
	Mar 7 - Mar 31	Mar 10 - Mar 12	Mar 10 - Mar 12	Aug 25 - Sep 17	Aug 25 - Sep 10
	Aug 25 - Sep 4	Aug 25 - Aug 31	Aug 25 - Aug 31	Oct 1 - Nov 1	Oct 1 - Oct 12
	Oct 1 - Oct 6	Oct 1 - Oct 6	Oct 1 - Oct 6		Oct 19 - Oct 23
	Oct 12 - Oct 14				

Table 26.–Walleye pollock harvest and effort in millions of pounds from the Central and Western Gulf of Alaska, 1995–2012.

NMFS Area	Year	Vessels	Landings	Pounds	State Waters	Discards
					Harvest (%) <sup>a</sup>	at Sea
Central GOA	1995	162	934	74.0	12	1.3
	1996	134	1,035	50.4	28	1.6
	1997	190	1,782	121.4	31	1.9
	1998	166	1,847	206.8	34	0.4
	1999	164	1,484	148.2	27	0.5
	2000	137	1,328	106.2	4	0.5
	2001	157	1,421	87.0	21	0.3
	2002	135	1,095	71.0	43	0.2
	2003	120	945	71.9	23	0.2
	2004	108	895	86.7	37	0.4
	2005	105	937	102.9	23	0.3
	2006	123	1,388	96.9	29	0.2
	2007	165	1,634	73.0	26	0.3
	2008	173	1,580	71.8	32	1.0
2009	167	1,360	54.1	35	0.6	
2010	164	1,477	101.6	23	1.0	
2011	188	1,618	121.9	11	1.7	
2012	208	1,905	154.5	18	1.6	
10-Yr Average		152	1,374	93.5	26	0.7
<hr/>						
NMFS Area	Year	Vessels	Landings	Pounds	State Waters	Discards
					Harvest (%) <sup>a</sup>	at Sea
Western GOA	1995	101	361	65.7	34	0.8
	1996	59	322	52.2	60	0.8
	1997	85	334	62.5	32	0.7
	1998	94	381	65.7	58	0.1
	1999	90	454	52.8	53	0.3
	2000	74	474	47.3	79	0.1
	2001	68	582	67.5	74	0.1
	2002	53	334	38.2	49	0.2
	2003	55	280	37.1	54	0.1
	2004	59	415	50.9	61	0.1
	2005	60	584	67.9	49	0.1
	2006	64	664	53.8	62	0.2
	2007	62	633	38.2	53	0.1
	2008	56	490	32.8	34	0.0
2009	66	418	30.7	68	0.1	
2010	67	642	57.1	58	0.1	
2011	72	723	45.0	53	0.2	
2012	72	782	60.2	73	0.3	
10-Yr Average		63	563	47.3	56	0.1

Notes: Harvest reported in (millions) whole fish pounds. Discards at sea are excluded from all except the Discards at Sea column.

GOA = Gulf of Alaska.

<sup>a</sup> Percent of total walleye pollock harvested in state waters (0 to 3 nmi).

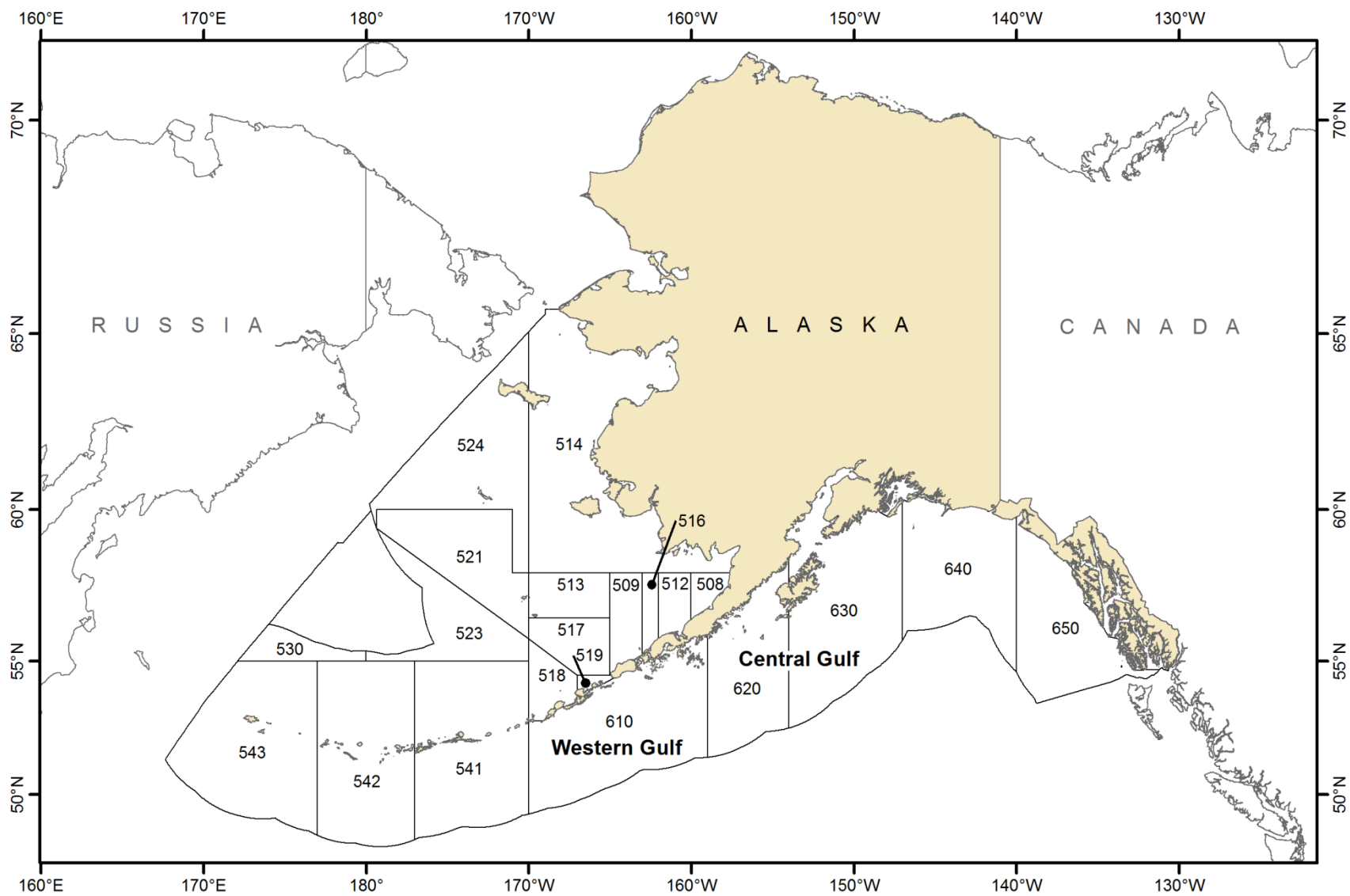


Figure 1.—National Marine Fisheries Service statistical and reporting areas.

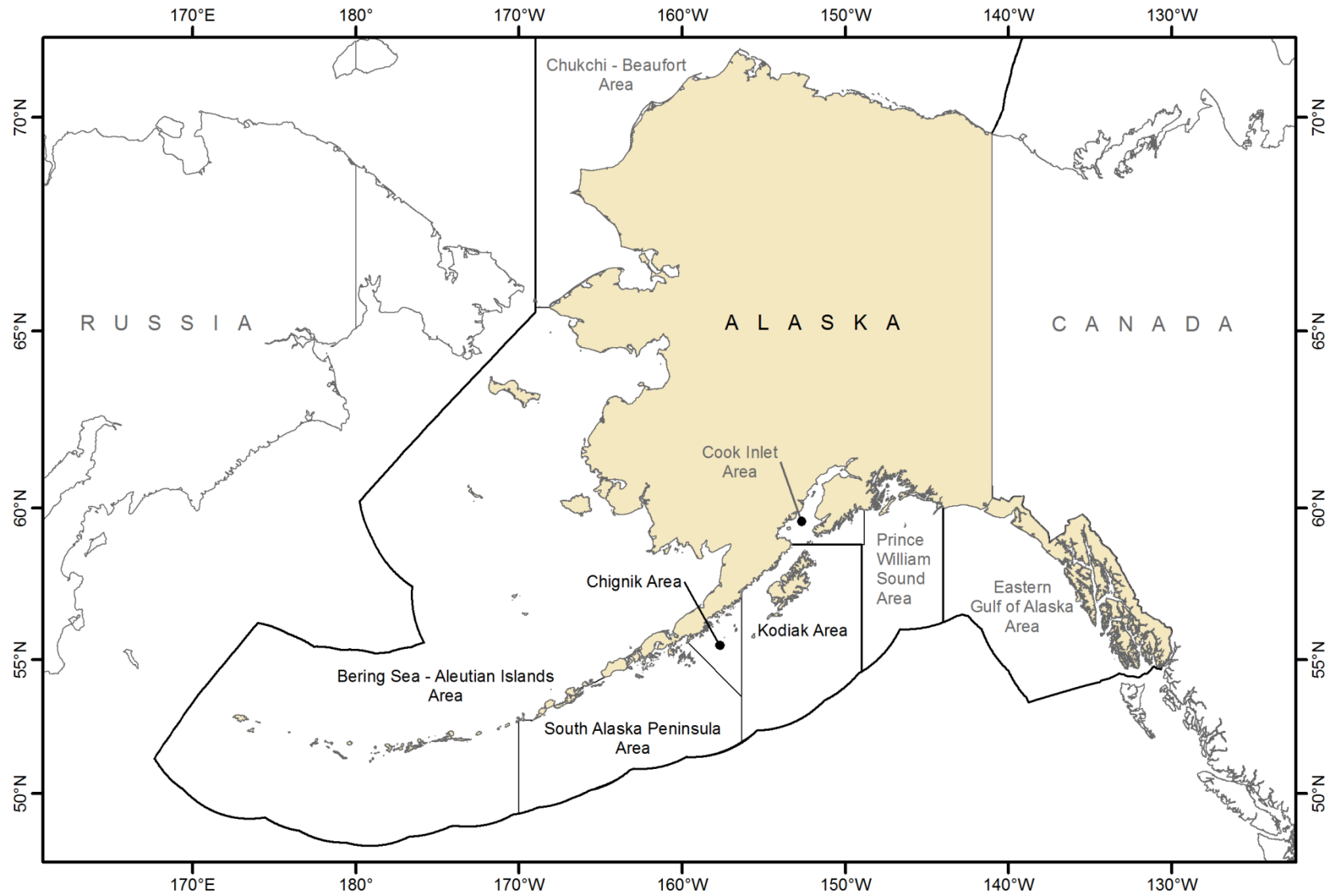


Figure 2.—Alaska Department of Fish and Game groundfish registration areas and regions.

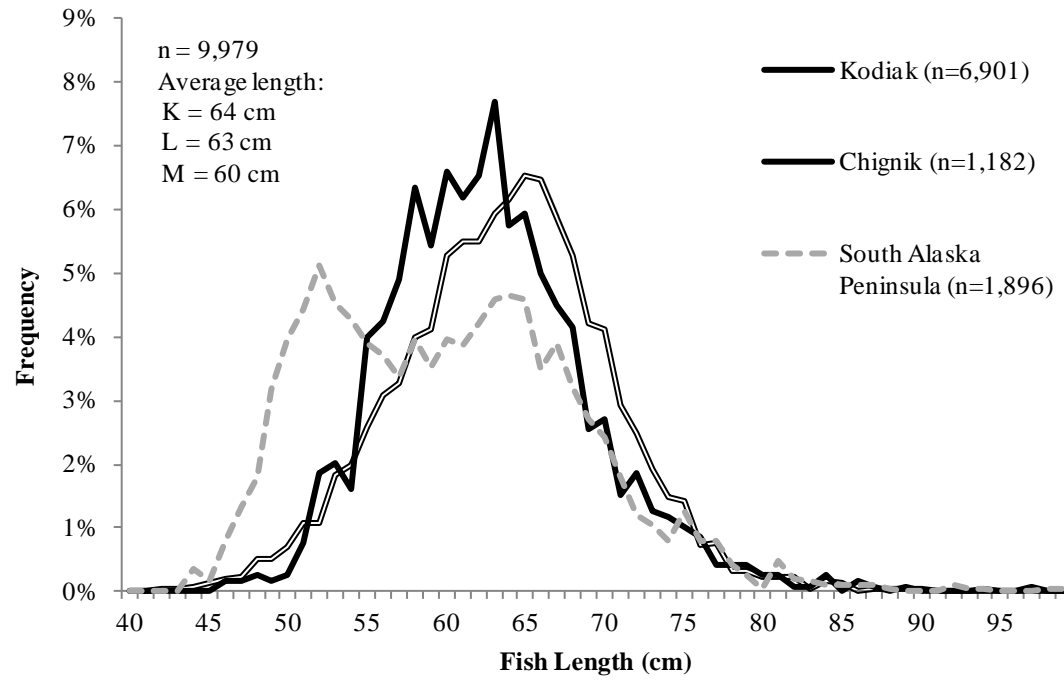


Figure 3.—Pacific cod length frequency by area from the 2012 state-waters fisheries in Kodiak (K), Chignik (L), and South Alaska Peninsula (M) areas.

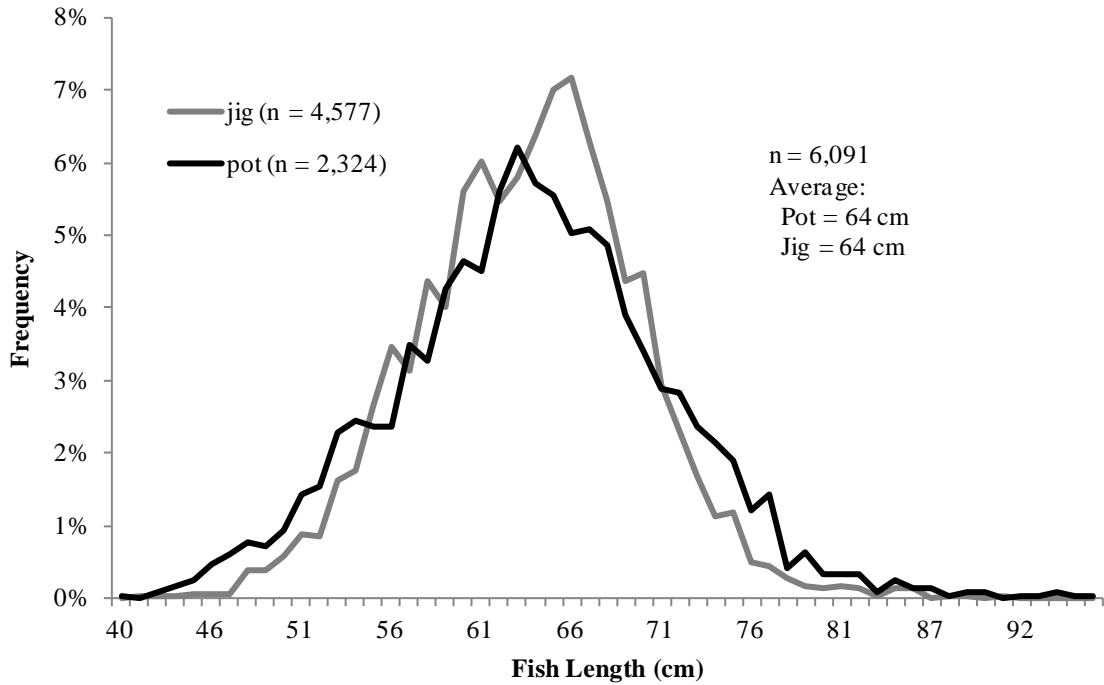


Figure 4.–Pacific cod length frequency by gear type from the 2012 state-waters fisheries in the Kodiak Area.

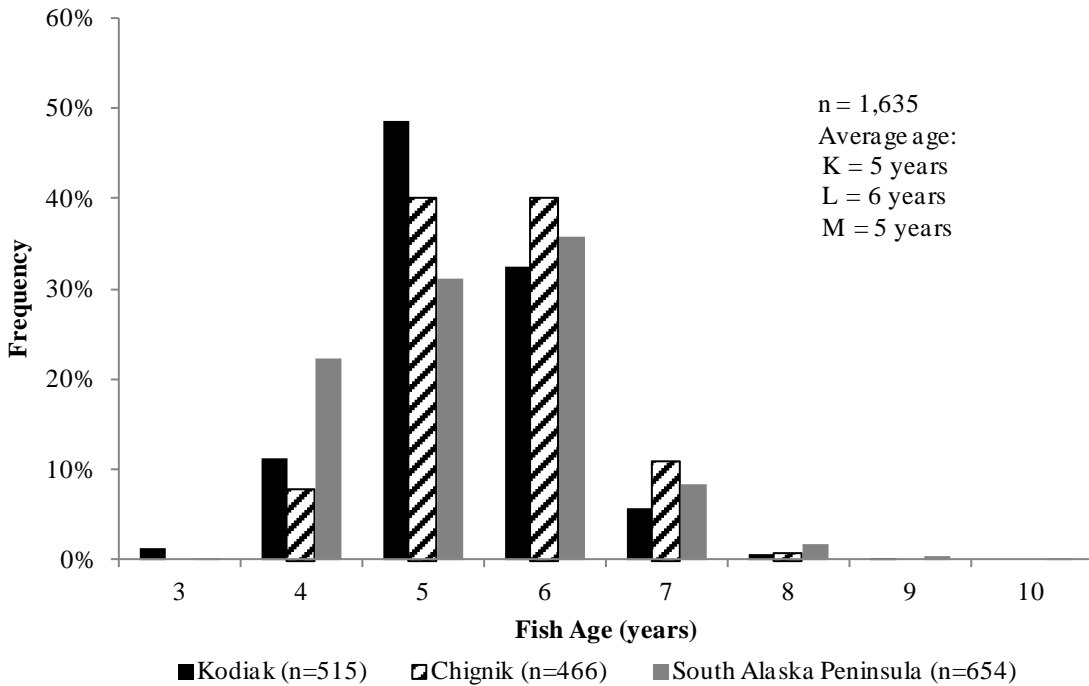


Figure 5.–Age composition of Pacific cod sampled from the 2012 state-waters fishery in Kodiak (K), Chignik (L), and South Alaska Peninsula (M) areas.



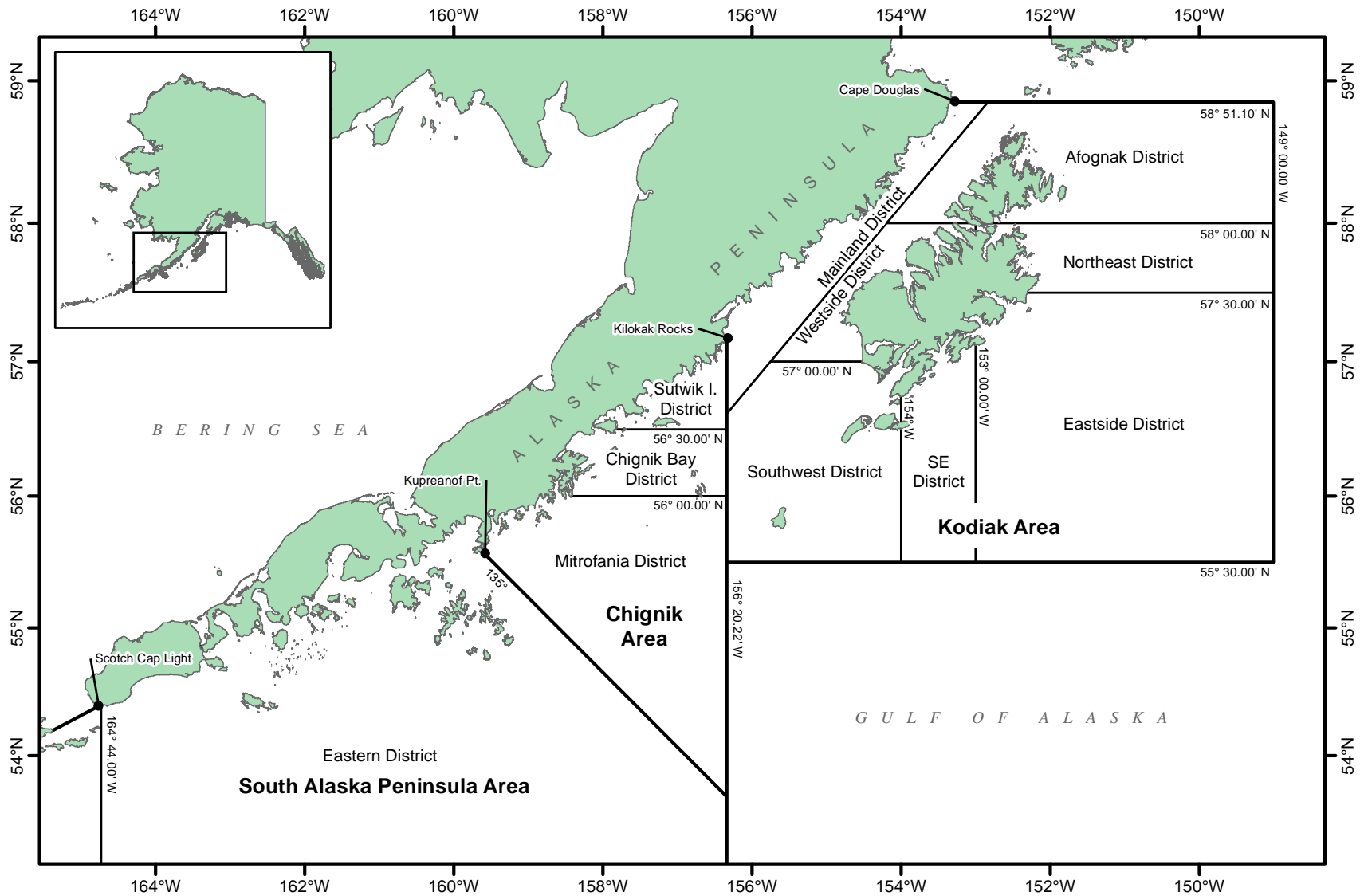


Figure 6.—Kodiak, Chignik, and South Alaska Peninsula black rockfish management areas and districts, 2012.

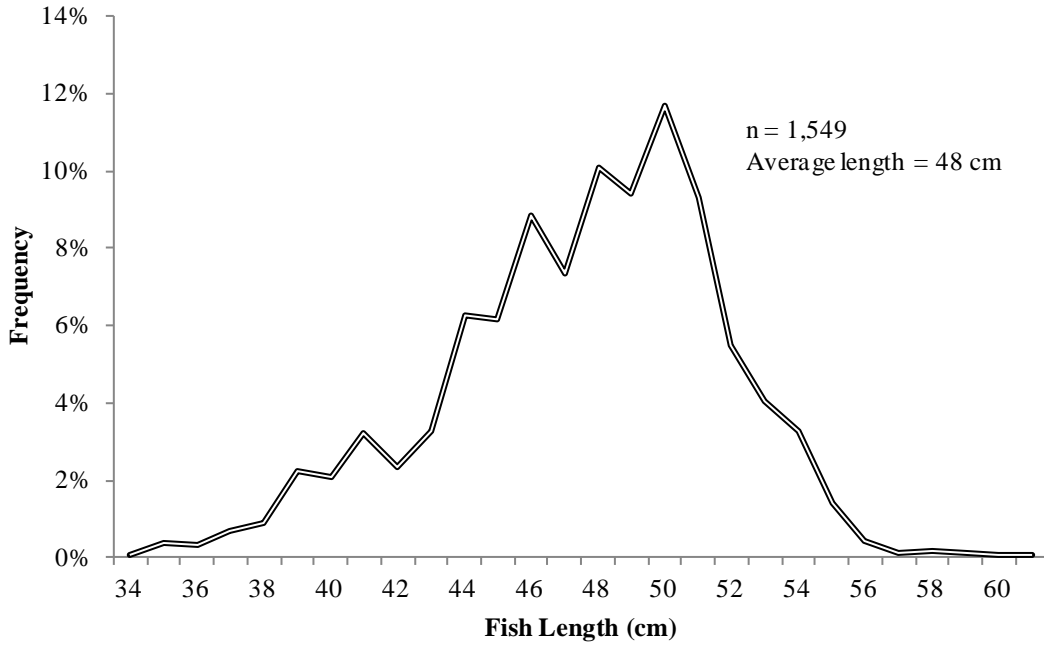


Figure 7.—Size composition of black rockfish sampled from the 2012 fishery in the Kodiak Area.

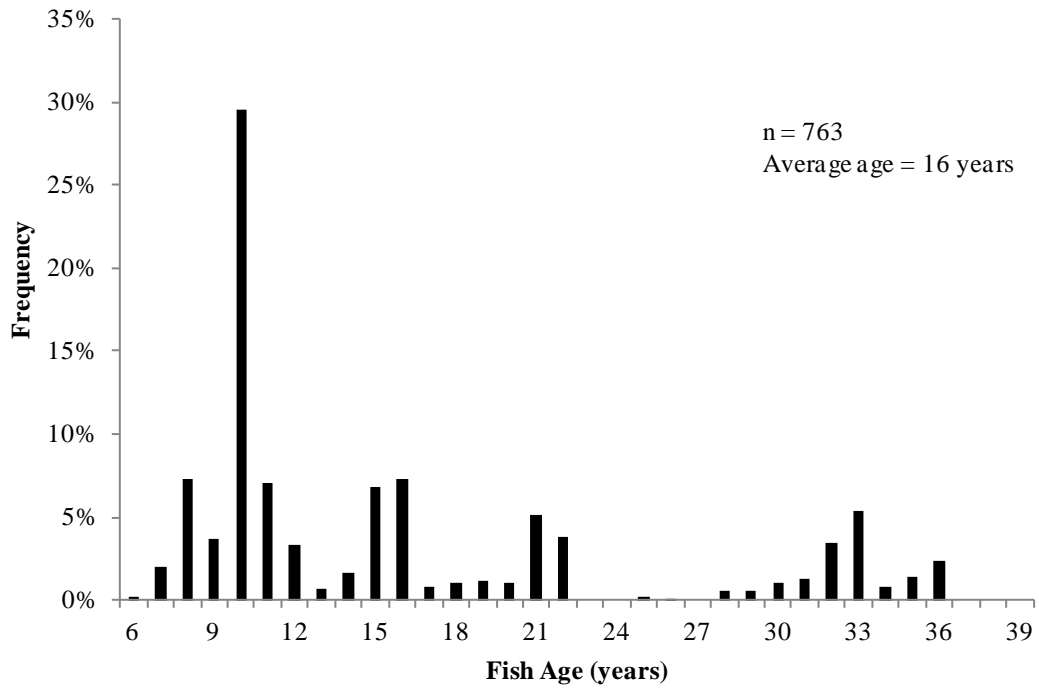


Figure 8.—Age composition of black rockfish sampled from the 2012 fishery in the Kodiak Area.

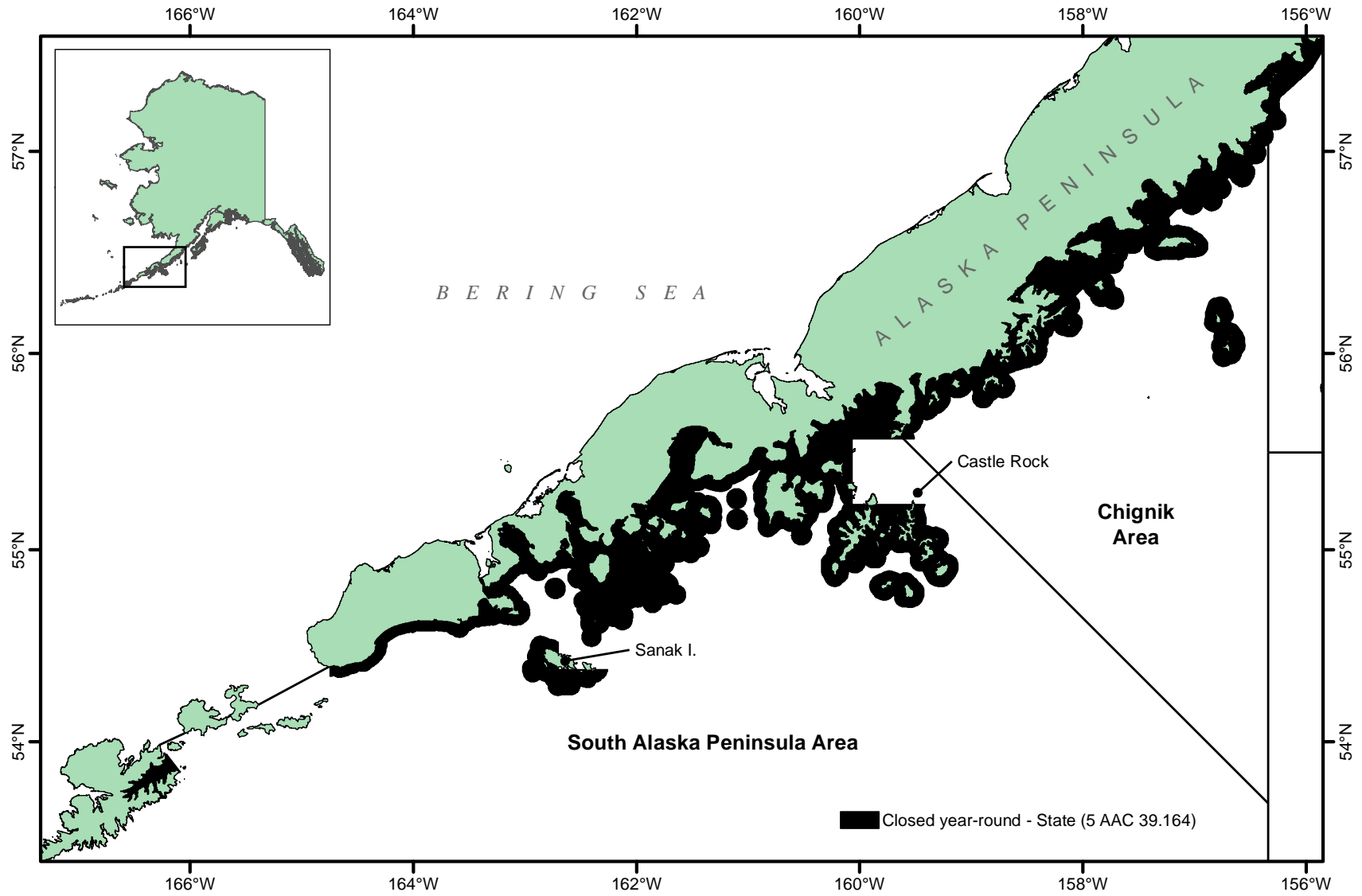


Figure 9.—Chignik and South Alaska Peninsula area non pelagic trawl gear closures, 2012.

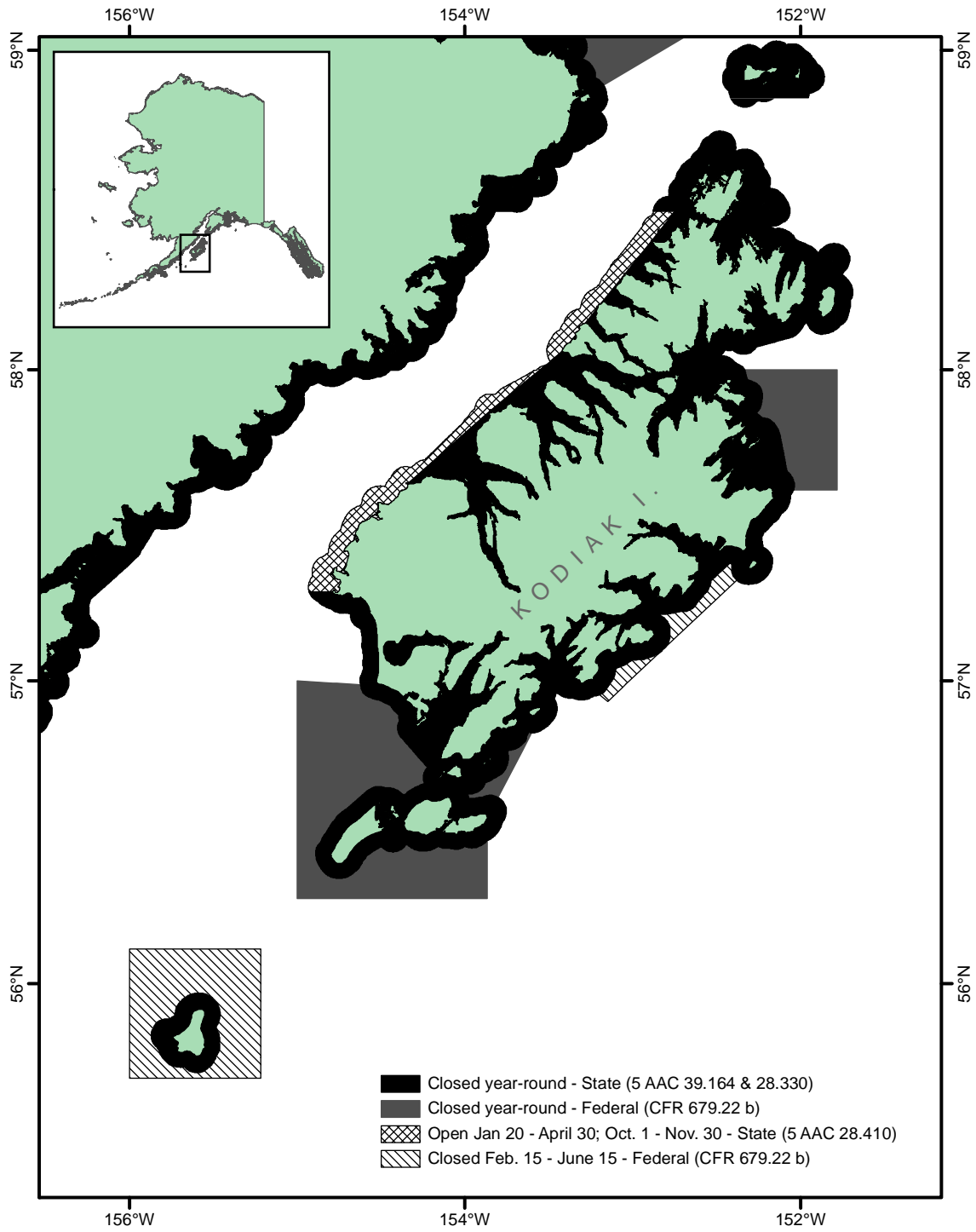


Figure 10.—Kodiak Area non pelagic trawl gear closures, 2012.

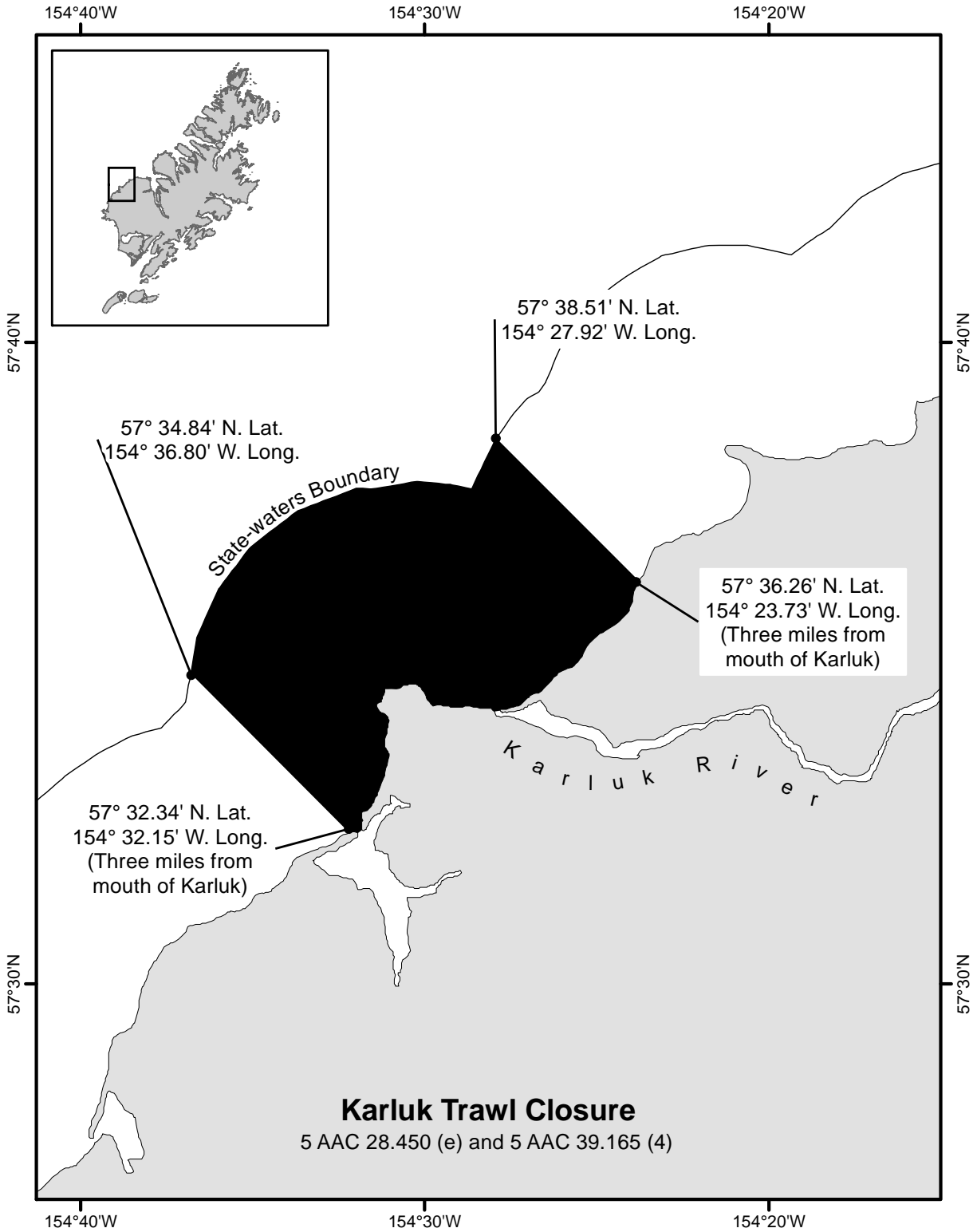


Figure 11.—Karluk trawl closure, 2012.



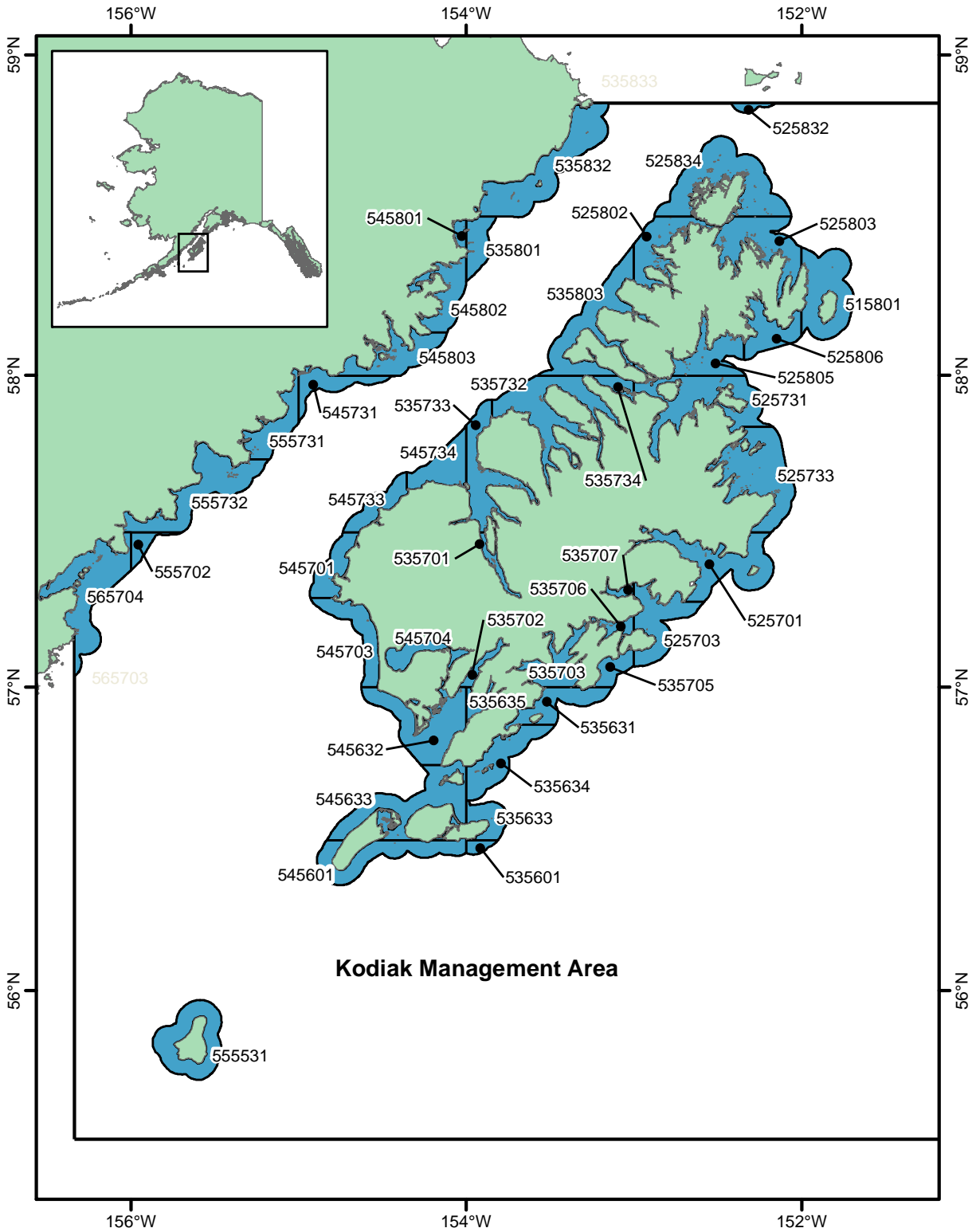
**APPENDIX A. FREQUENTLY USED ACRONYMS  
AND KEY WORDS**

Appendix A1.–Frequently used acronyms and key words.

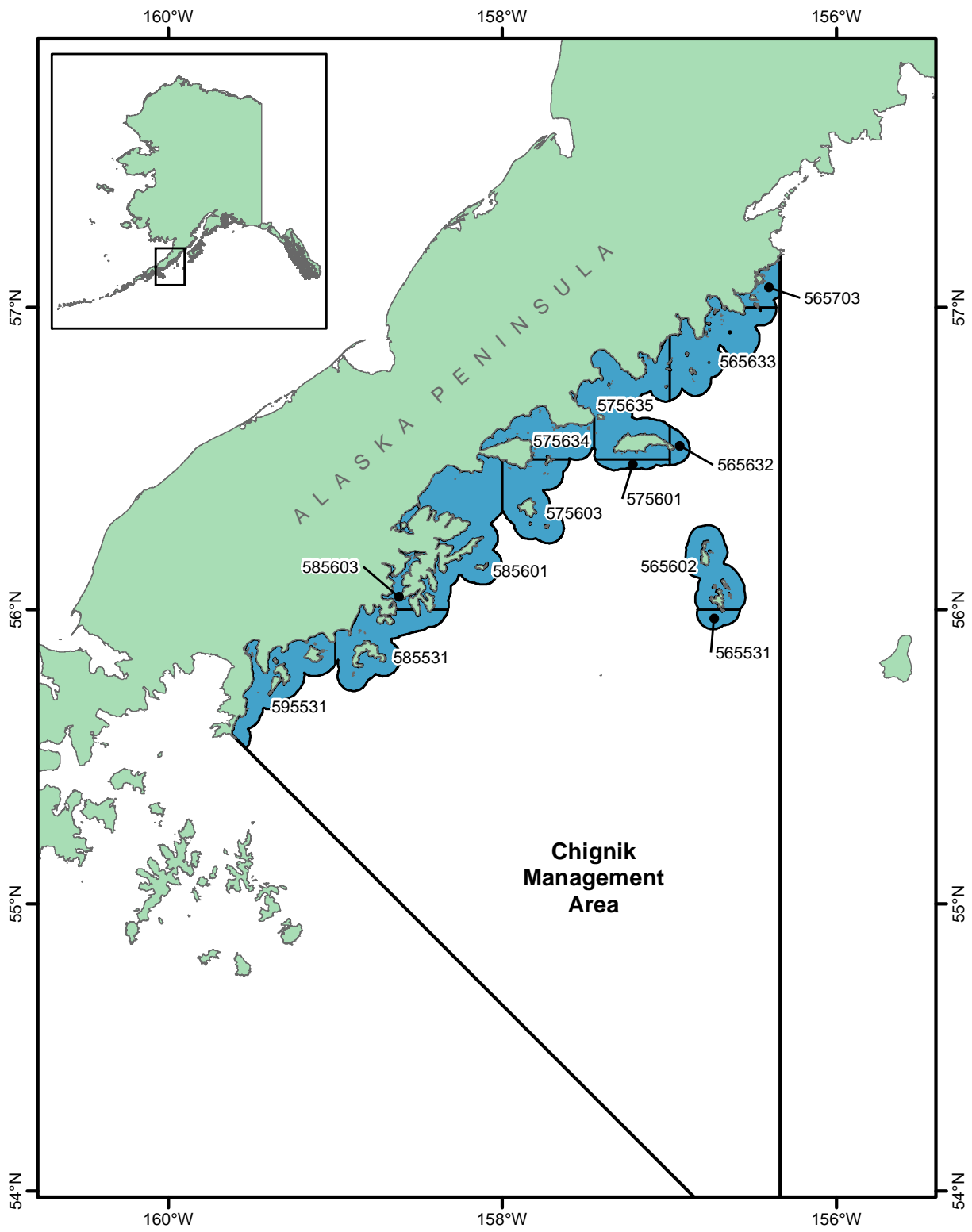
Acronym	Definition
ABC	Acceptable Biological Catch, stock specification as set by NPFMC on an annual basis
BOF	Alaska Board of Fisheries
BSAI	Bering Sea-Aleutian Islands Area, state management area or federal management area
CGOA	Central Gulf of Alaska, comprised of federal management areas 620 and 630
EEZ	Exclusive Economic Zone, federal waters from 3 to 200 nautical miles offshore
EGOA	Eastern Gulf of Alaska, comprised of federal management areas 640 and 650
EO	Emergency order, management action taken by ADF&G to effect regulatory change
GHL	Guideline Harvest Level
GOA	Gulf of Alaska
LLP	Federal License Limitation Program
mt	metric ton (equal to 2,204.62 pounds)
NMFS	National Marine Fisheries Service
NPFMC	North Pacific Fishery Management Council
Parallel fishery	State waters from 0 to 3 nautical miles opened by the state under federal rules while a federal fishery is ongoing from 3 to 200 nautical miles
SSL	Steller Sea Lion
State waters	Territorial sea from shore to three nautical miles
State-waters fishery	Fishery occurring from shore to 3 nautical miles open under Alaska Board of Fisheries regulations and managed exclusively by Alaska Department of Fish and Game
State-managed fishery	Fishery occurring from shore to 200 nautical miles and managed exclusively by Alaska Department of Fish and Game
TAC	Total Allowable Catch, final federal harvest specification for directed fishing as recommended by NPFMC and set by NMFS
WGOA	Western Gulf of Alaska, federal management area 610



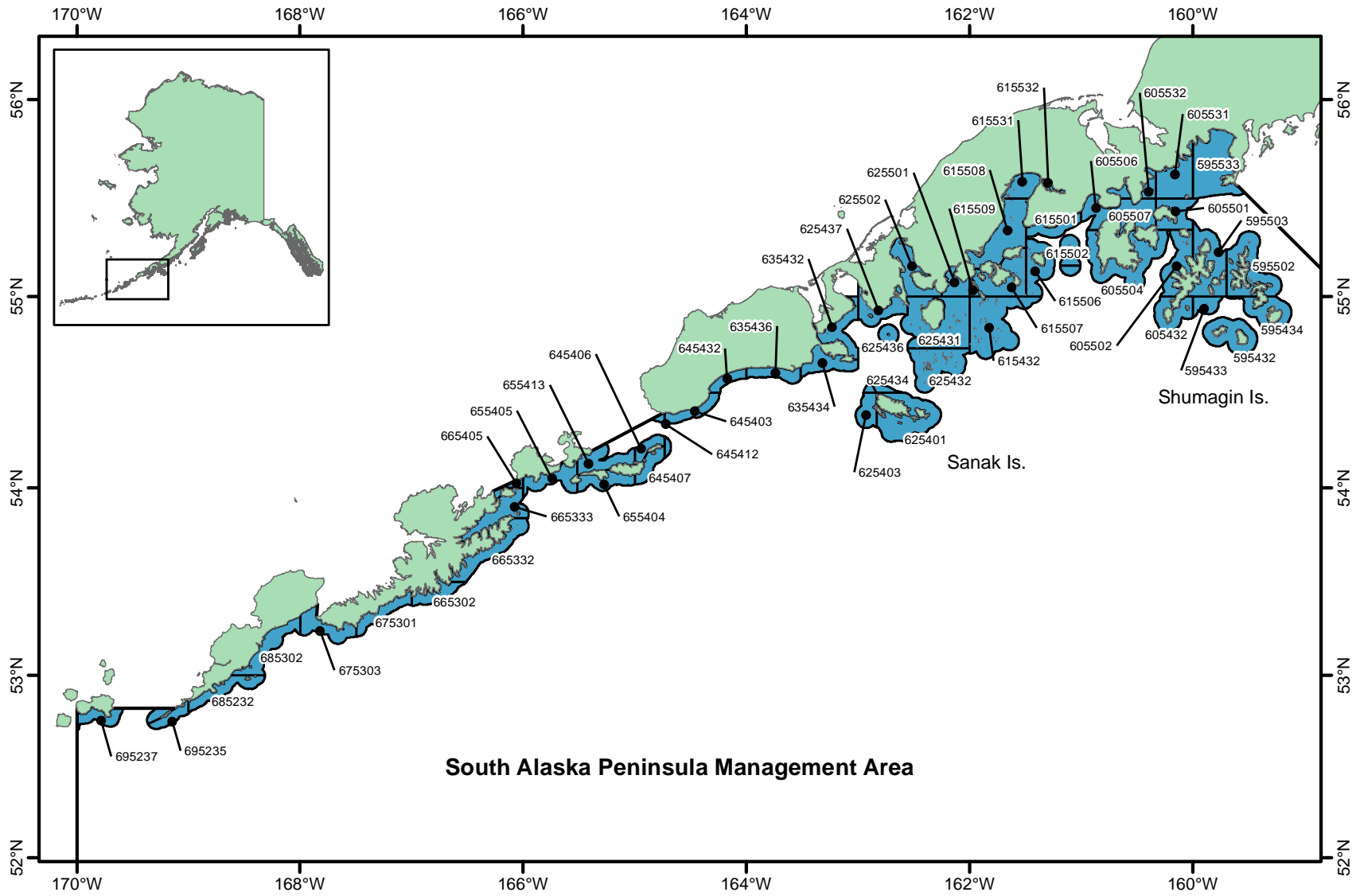
**APPENDIX B. KODIAK, CHIGNIK, AND SOUTH ALASKA  
PENINSULA MANAGEMENT AREAS STATE-WATERS  
STATISTICAL AREAS FOR GROUND FISH**



Appendix B1.—Kodiak Management Area state-waters statistical areas for groundfish.



Appendix B2.—Chignik Management Area state-waters statistical areas for groundfish.



Appendix B3.—South Alaska Peninsula Area state-waters statistical areas for groundfish.