

1023

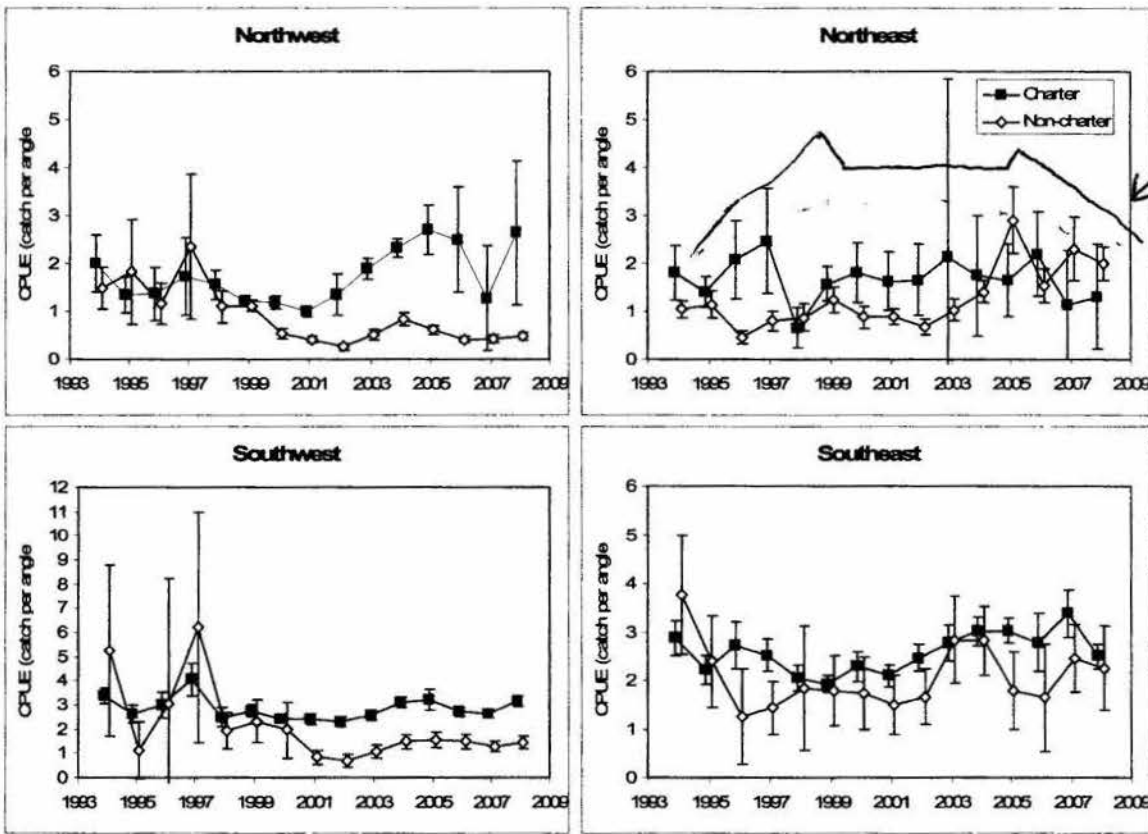


Figure 1. Average catch per angler-day of halibut (with 90% confidence intervals) by charter and private anglers in the four quadrants of Prince William Sound, 1994-2008. Catch is defined as the numbers of halibut kept and released, and estimates represent the average for all sampled boat-trips.

The ~~Northwest~~ Northeast graph above reflects the increase in commercial catch over time and was justified as a healthy and large exploitable biomass. Theoretically the CPUE should have continued to rise in the sport catch fishery and not drop drastically as we see in 1998. The remainder of sport catch reflects increasing health in biomass but is much lower than it should be as a suspected result of the continued bottom gear use through the summer as opposed to short openings prior to IFQ implementation.

Submitted by Mel Grove, PWSCBA

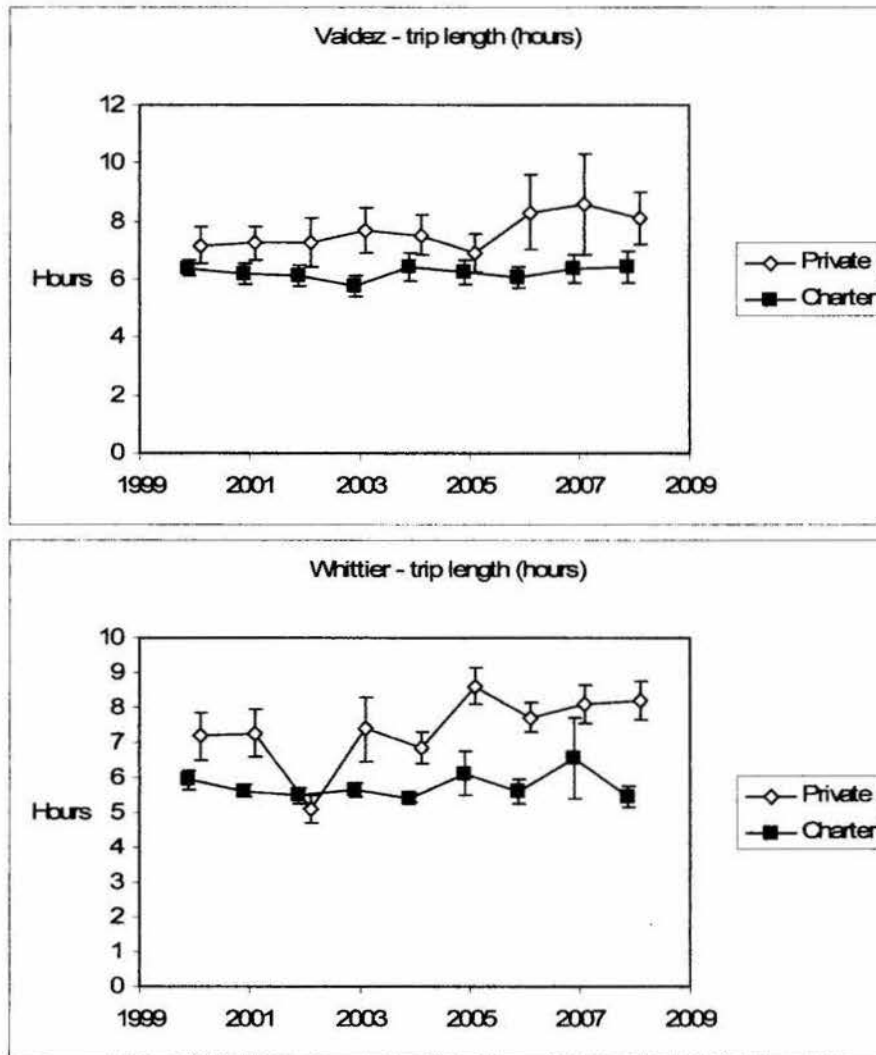
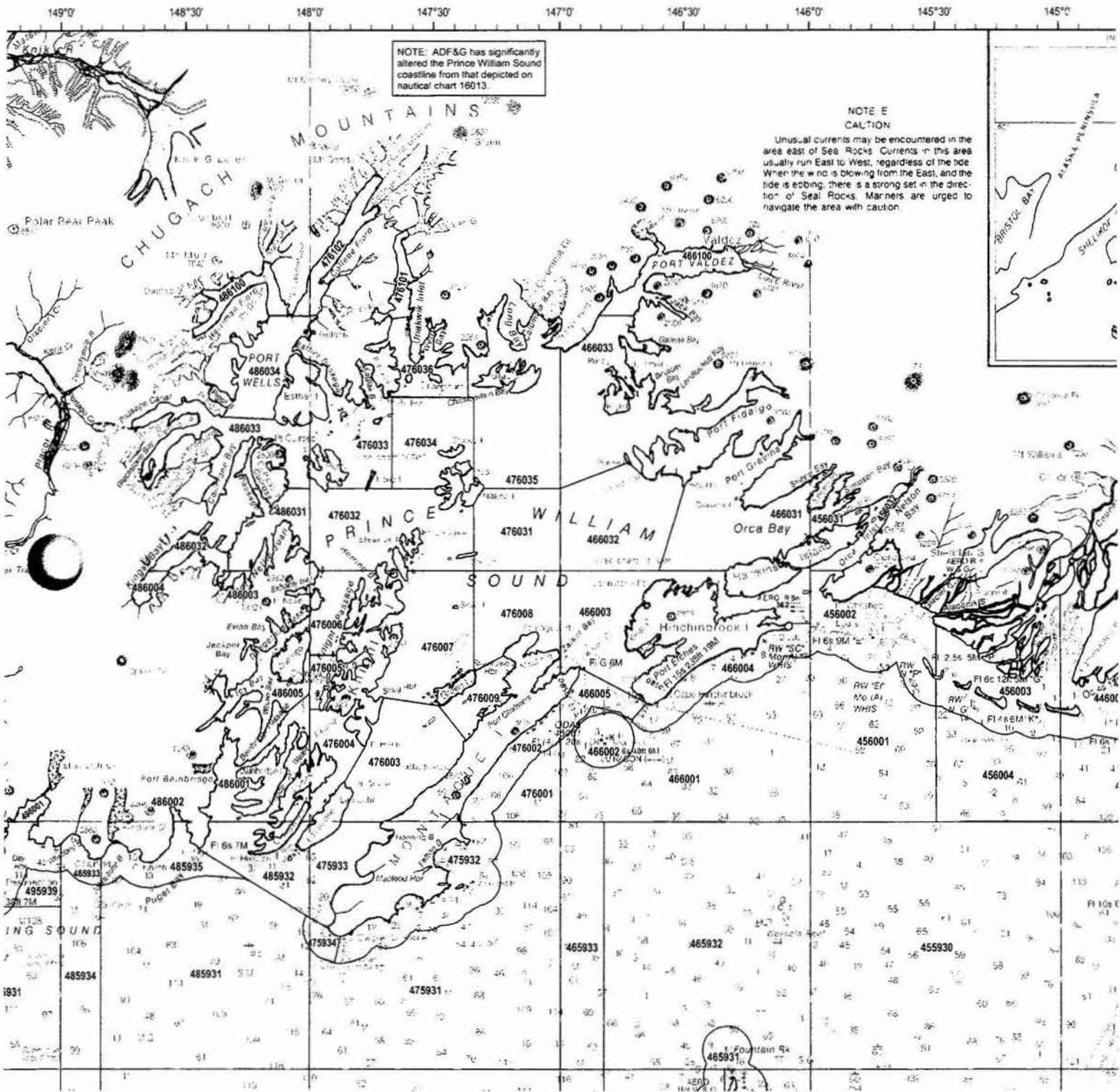
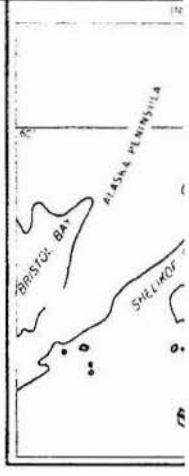


Figure 3. Average number of hours of fishing time reported by private anglers and charter operators during onsite interviews at Valdez and Whittier, 2000-2008. Vertical bars represent 90% confidence intervals.



NOTE: ADF&G has significantly altered the Prince William Sound coastline from that depicted on nautical chart 16013.

NOTE E
CAUTION
Unusual currents may be encountered in the area east of Sea Rocks. Currents in this area usually run East to West, regardless of the tide. When the wind is blowing from the East, and the tide is ebbing, there is a strong set in the direction of Seal Rocks. Mariners are urged to navigate the area with caution.





2 miles

©2010 Google

Eye alt: 237.47 km



3 miles from ...

12/01/2011

Re 24

Alaska Dept of Fish and Game
Board Support Section

Subject: BOF Proposals 2011/2012 PWS & Upper Copper River/Upper Susitna River Finfish Meeting

To: Board of Fisheries

Proposals 72-75 and 118 Opposed. Proposal 56 Support.

Please refer to following Board of Fisheries Findings and Policies.

93-145-FB Finding on Policy for Mixed Stock Salmon Fisheries

5AAC 39.222 (4) (D) Policy for the Management of Sustainable Salmon Fisheries

5AAC 39.220 Policy for the Management of Mixed Stock Salmon Fisheries

2006-249-FB Findings on the Copper River King Salmon Management Plan

Subsistence has priority; fully allocated fishery; all other users must share the burden of conservation.

Proposals 79, 81, 84-86, 89, 90, 92 and 96 Opposed. Proposal 85 and 91 Support.

Proposal 79

Gear depth regulations in PWS Districts need to be the same to stop guys from cheating.

Proposal 81

Taking intent out of a regulation that governs the use of a drift gillnet when these types of incidents happen unintentionally all the time is not a good idea. It will result in fisherman being unfairly harassed, threatened and convicted. This same proposal has been before the Board several times before and has been rejected. It would have been nice if the Dept of Law had weighed in on this proposal.

Proposal 84 and 86

To increase the length and efficacy of purse seines with the disparity in allocation and the concerns for wild stocks is not feasible. Leads were intended to be attached to the beach to lead salmon out to deeper water where the purse seine could operate without snagging on the bottom and possibly tearing the net. Leads were deployed for the whole week and shared by all the boats that wanted to fish that area. Today leads are never attached to the beach and most are sewn to the wing end of the seine. With this setup when the seine is set the lead is attached

to the seiner and when the seine skiff goes to the beach to lead the salmon out to deeper water the lead is out in deep water where the salmon are expected to hold until the set is closed and the lead pulled aboard the seiner. At times the seine vessel will go to the beach and the skiff is offshore. I find it ironic that Dept of Fish & Game has issues over drift gillnet gear specifications operations but is neutral when it comes to seine gear specifications and operations.

Proposal 89

This proposal is insane. Why is the Dept of Fish & Game only neutral when it comes to radically changing districts in Northwest Prince William Sound? I am opposed to any proposal that radically affects or changes **5 AAC 24.370. Prince William Sound Management and Salmon Enhancement Allocation Plan**

Proposal 90

The northern and southern ends of this district have high concentrations of gear and need to include the historic areas to a Eshamy District defined by lat/long coordinates.

Proposal 92

I am opposed to any proposal that radically affects or changes **5 AAC 24.370. Prince William Sound Management and Salmon Enhancement Allocation Plan**

Proposals 101-112 and 114, 115 Opposed.

Please refer to following Board of Fisheries Findings.

97-167-FB PWS Management and Salmon Enhancement Allocation Plan

2003-225-FB PWS Management Plan Workgroup

2006-248-FB Prince William Sound Management and Salmon Enhancement Allocation Plan

I am opposed to any proposal that radically affects or changes **5 AAC 24.370. Prince William Sound Management and Salmon Enhancement Allocation Plan.**

I have been involved with Copper River and Prince William Sound Fisheries for over 40 years and was active in the debate concerning enhanced salmon allocation since day one. A lot of work went into the current Prince William Sound Management and Salmon Enhancement Allocation Plan. There are no gray areas and the boundaries defined. Thank you for considering my comments.

Michael Bowen
2150 Innes Cr
Anchorage, AK 99515

RC25

Allocation Policy

A. Introduction

The Prince William Sound Aquaculture Corporation is the designated Regional Aquaculture Association for the Prince William Sound and Copper River Salmon Management Region. PWSAC, as part of the Regional Planning Team, is responsible for developing the regional comprehensive salmon plan to rehabilitate natural stocks and supplement natural production. The regional comprehensive salmon plan is maintained with the review of the hatchery management plans on an annual basis.

This policy is PWSAC's allocation policy and is limited to the enhanced salmon production from its operations of the Armin F. Koernig, Cannery Creek, Gulkana, Main Bay, and Wally Noerenberg Hatcheries.

B. Policy Intent

It is the intent of the policy to provide clear direction on the allocation and production of enhanced salmon.

C. Allocation Policy

It is the policy of PWSAC to equitably allocate its enhanced salmon resources among all users through long-term planning, production and dedication of financial and human resources.

Subsistence, sport and personal use needs will continue to be addressed within planning and production strategies.

Pertaining to commercial fisheries, enhanced salmon allocations will be based upon the Prince William Sound Management and Salmon Enhancement Allocation Plan (5 AAC 24.370).

The understandings contained in (5 AAC 24.370) shall be one reference for corporate financial and production planning so as to maintain, to the extent practical, the prescribed balance of benefits between drift gillnetters, purse seiners, and set gillnetters.

Submitted By: David Rogiani
PWSAC 