



# Walleye Pollock Fishery in Alitak Bay



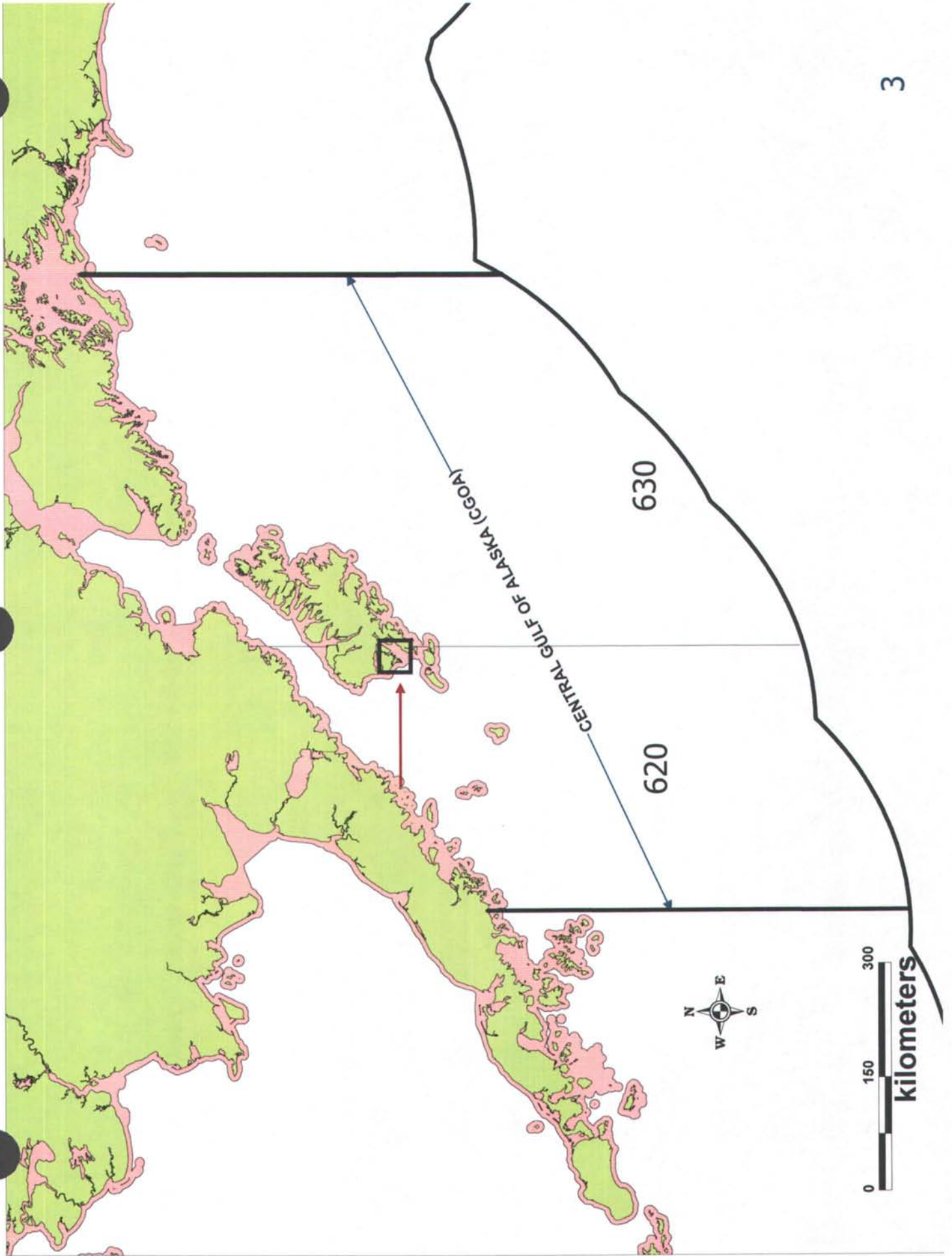
By

Nicholas Sagalkin  
Alaska Department of Fish and Game  
211 Mission Road  
Kodiak, AK 99615

January 2008

# Walleye Pollock Fishery

- The Central Gulf of Alaska (CGOA) walleye pollock fishery is managed by the National Marine Fisheries Service (NMFS) in the Exclusive Economic Zone (EEZ)
- Concurrent to the CGOA opening in the EEZ, the state opens state waters termed a "Parallel Fishery"
- During the parallel walleye pollock fishery the state adopts the seasons, bycatch limits, allowable gear types, observer coverage, and closed waters as regulated by the federal government in adjacent waters of the EEZ





Katy Mcgauley



# Walleye Pollock Fishery

- Exclusively pelagic trawl gear
- Quotas are split into 4 seasons:
  - (A) January 20 – March 10
  - (B) March 10 – May 31
  - (C) Aug 85 – Sept 31
  - (D) Oct 1 – Nov 1
- Separate quotas between Area 620 and Area 630
- Vessels greater than 125' – 100% observer coverage – none
- Vessels between 60-125' are required to have 30% observer coverage
- Vessels less than 60' are not required to have observers – but very few participate

## Alitak Bay Pelagic Trawl Proposals

- Proposal 38 – Close Alitak Bay to pelagic trawling year-round  
ADF&G is Neutral
- Proposal 39 – Close Alitak Bay to pelagic trawling March 1 – November 1  
ADF&G is Neutral
- Proposal 40 – Require 100% observer coverage in Alitak Bay  
ADF&G Supports

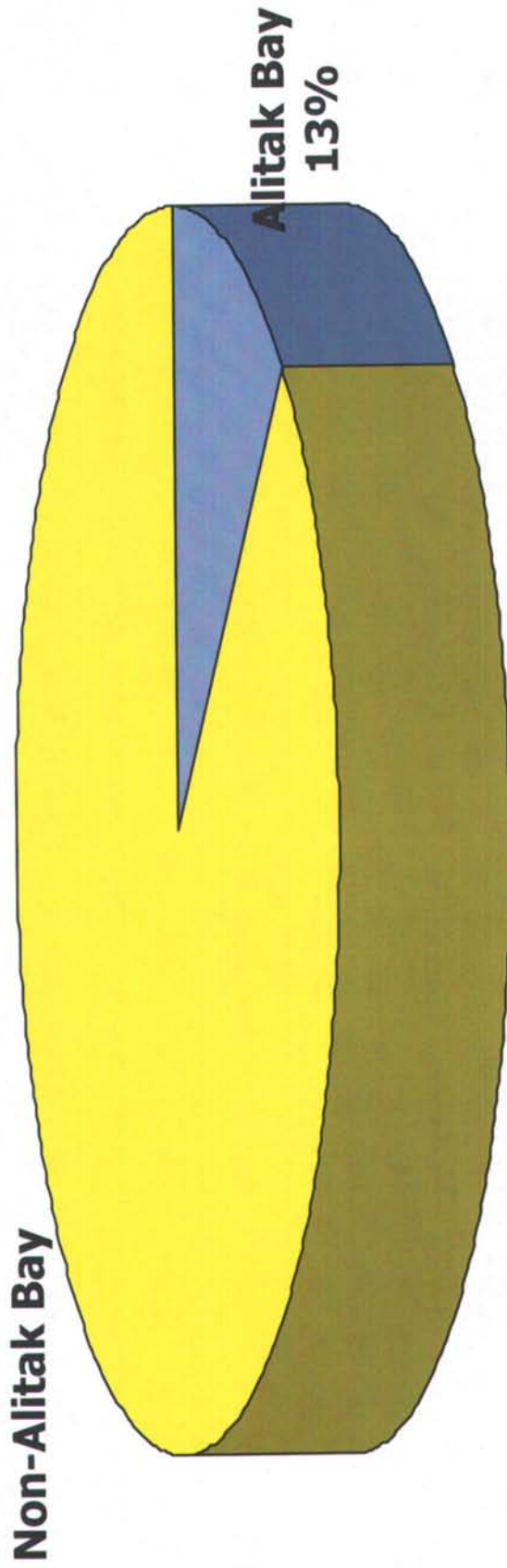




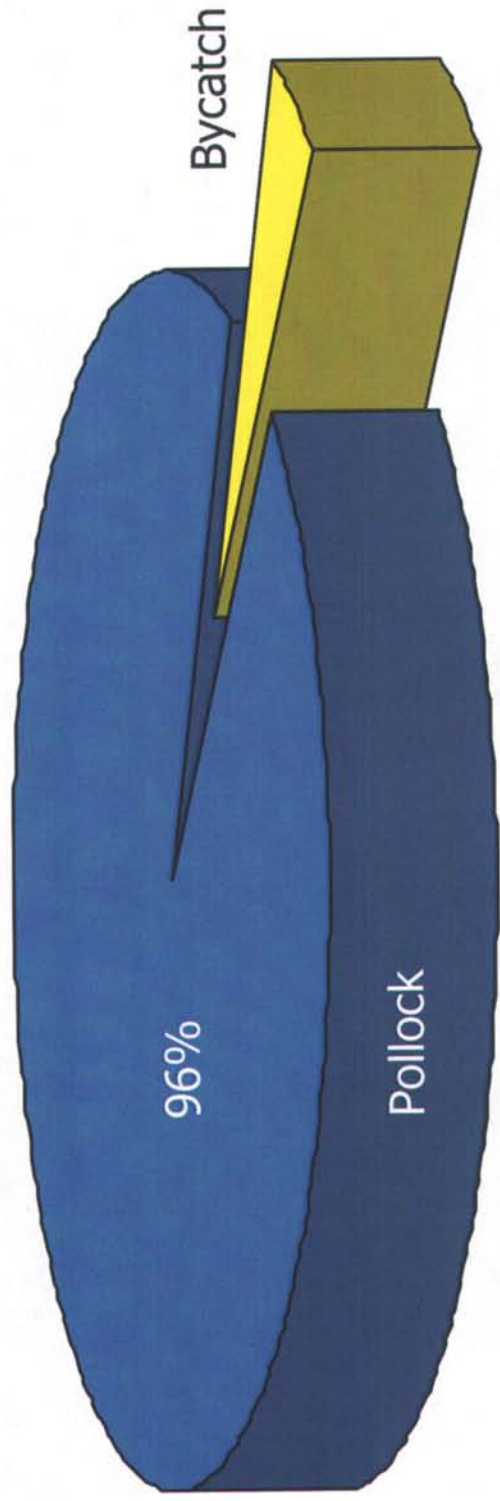
# Pollock Fishery Vessel Effort

Year	Area-620	Alitak Bay
2003	48	20
2004	47	32
2005	49	19
2006	45	21
2007	37	19
Average	45	22

# Harvest Distribution in Area-620



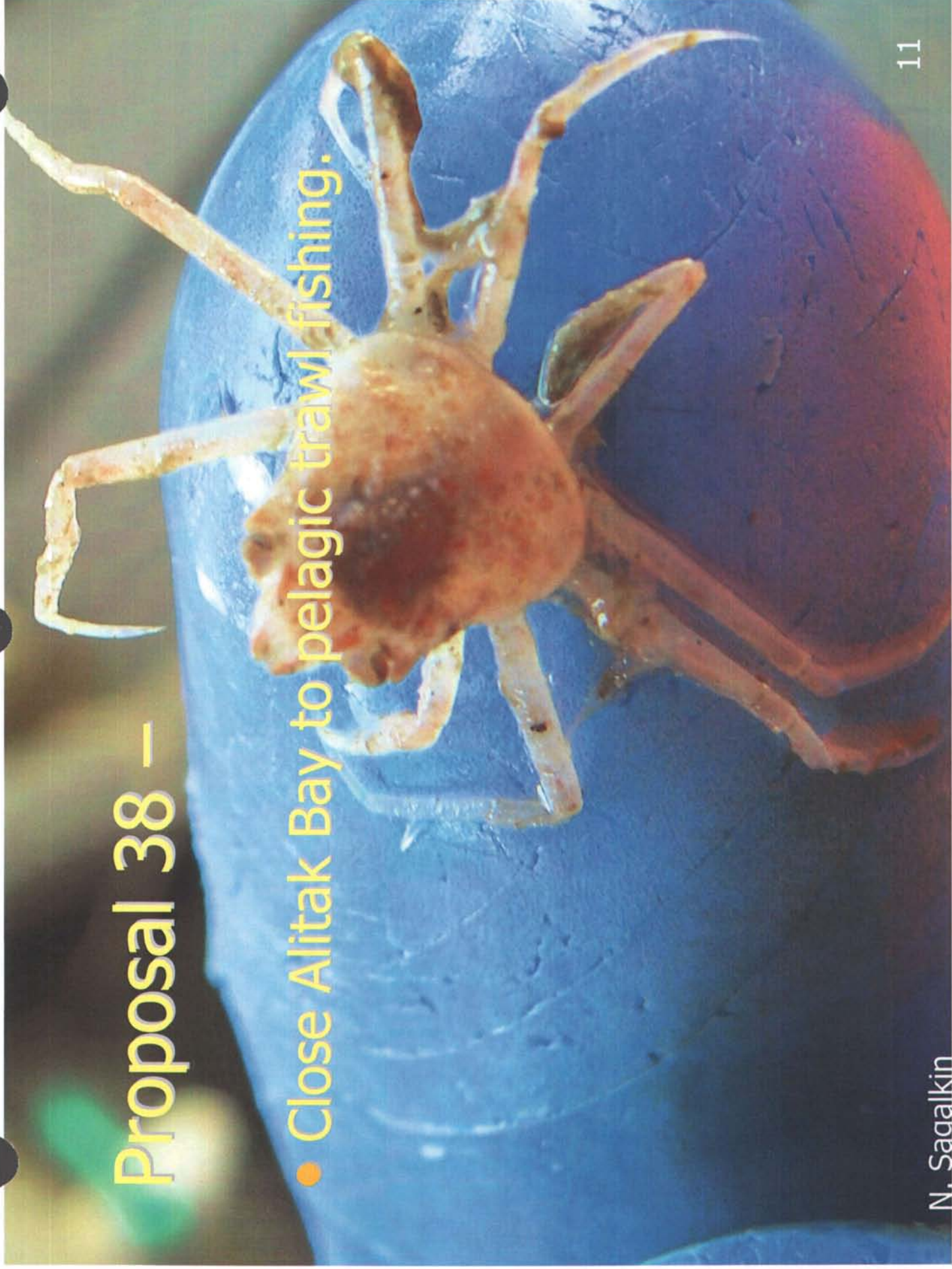
# Alitak Bay Observer Data (2004 – 2007)





# Proposal 38 –

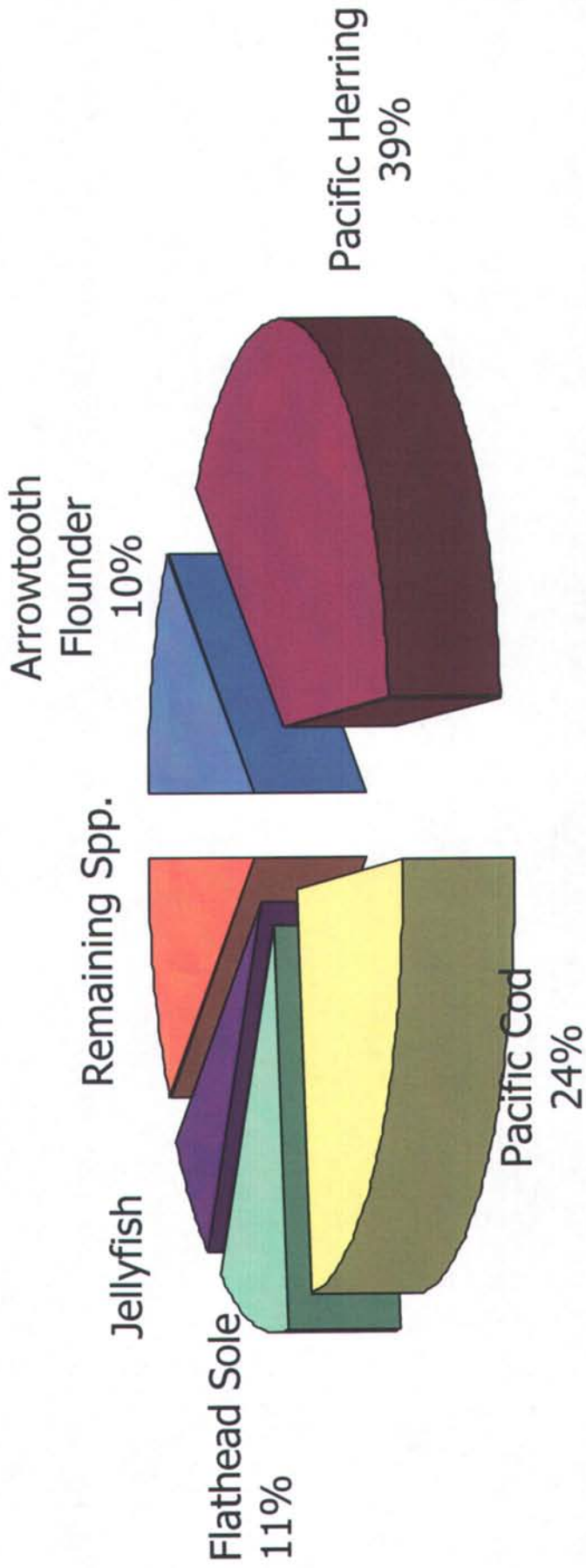
- Close Alitak Bay to pelagic trawl fishing.





# Bycatch Composition

(Alitak Bay Observer Data 2004 -2007)



# Alitak Bay Bycatch vs. Commercial Harvest

	Pelagic Trawl Bycatch		Directed Harvest	
	Year	Pounds	Year	Pounds
Red King Crab	2004	237	2004	closed
	2005	0	2005	closed
	2006	0	2006	closed
	2007	0	2007	closed

	Pelagic Trawl Bycatch		Directed Harvest	
	Year	Pounds	Year	Pounds
Tanner Crab	2004	715	2004	closed
	2005	0	2005	450,000
	2006	0	2006	150,000
	2007	0	2007	closed



# Proposal 39

- Close Alitak Bay to pelagic trawl fishing from MARCH 1 – NOVEMBER 1

# Alitak Bay Bycatch vs. Commercial Harvest

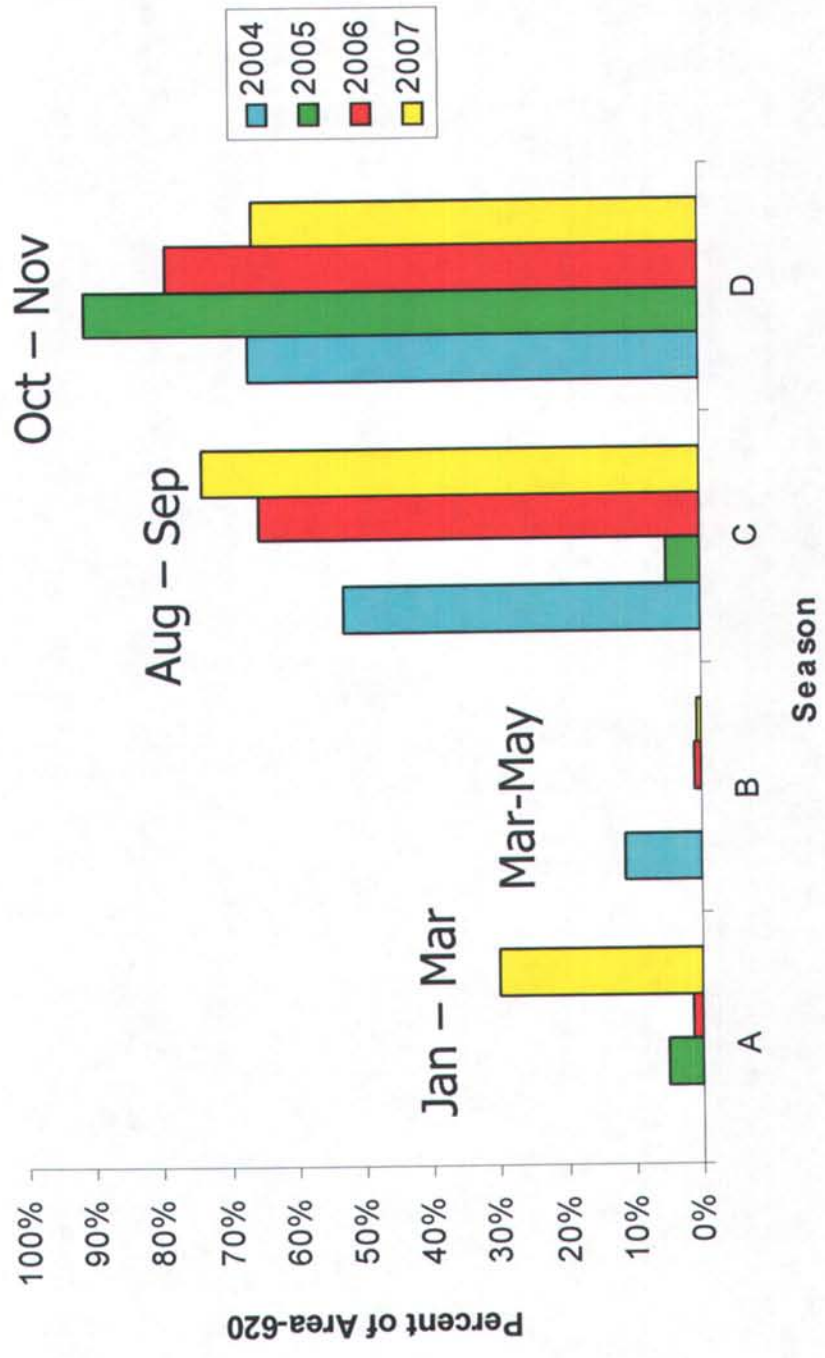
	Pelagic Trawl Bycatch		Directed Harvest	
	Year	tons	Year	tons
Pacific herring	2004	154	2004	52
	2005	16	2005	319
	2006	7	2006	216
	2007	13	2007	350

	Chinook salmon		Directed Harvest	
	Year	Pounds	Year	Pounds
Chinook salmon	2004	1,956	2004	24,774
	2005	1,110	2005	11,239
	2006	675	2006	961
	2007	517	2007	486



# Harvest of Pollock Timing

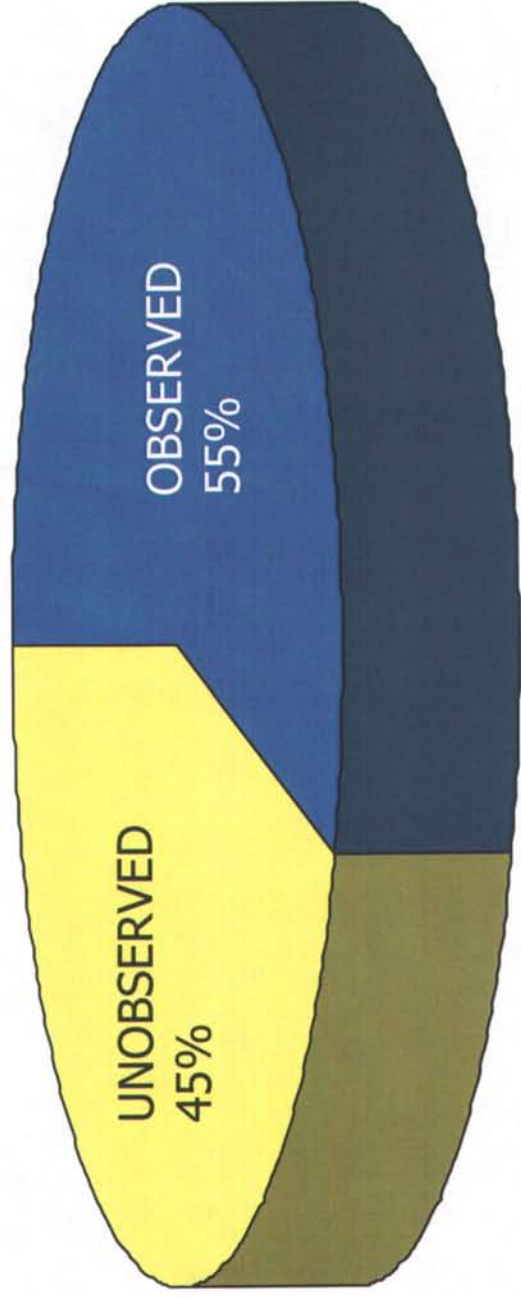
Harvest From Alitak



## Proposal 40

- Implement 100% observer coverage on pelagic trawl vessels in Alitak Bay

# Percent of Alitak Bay Pelagic Trawl Harvest Observed, 2004 - 2007





# THE END