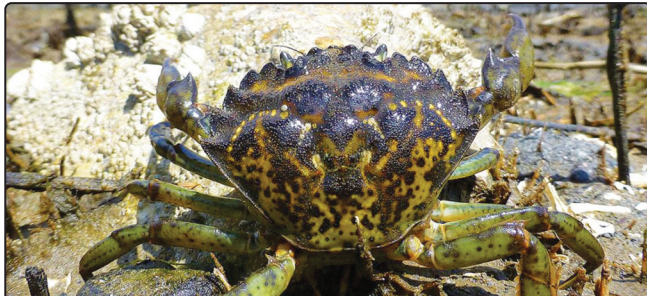




PROTECT ALASKA WATERS HELP STOP THE SPREAD OF INVASIVE SPECIES!



Northern pike are only invasive in Southcentral Alaska. They are native fish species in Northern and Southwest Alaska.



European Green Crab are established in Southeast Alaska, the extent of their distribution is currently unknown.



Elodea is currently found in Northern and Southcentral Alaska.



These small mussels are no larger than 2 inches long. Photo courtesy of USGS

Zebra (left) and quagga (right) mussels have not been found in Alaska. However, they could accidentally be transported on boats coming from infested waters.



Signal crayfish are currently in the Buskin Watershed on Kodiak Island.



AQUATIC INVASIVE SPECIES DAMAGE FISHERIES, HABITAT, AND FISHING OPPORTUNITIES IN ALASKA.

Scan the QR code or call the invasive species hotlines at 1 (877) INVASIV to report sightings of any invasive, nonnative, or unusual animals or plants. To learn more about these and other aquatic invasive species and how to prevent the spread of them, visit the invasive species webpage at <https://www.adfg.alaska.gov/index.cfm?adfg=invasive.main>.

ALASKA DEPARTMENT OF FISH & GAME SOUTHCENTRAL ALASKA SPORT FISH OFFICES



Palmer
(907) 746-6300
Inseason Fishing Hotline
(907) 746-6300

Anchorage
(907) 267-2218
Inseason Fishing Hotline
(907) 267-2510

Soldotna
(907) 262-9368
Inseason Fishing Hotline
(907) 262-2737

Cordova
(907) 424-3212

Homer
(907) 235-8191
Inseason Fishing Hotline
(907) 235-6930

