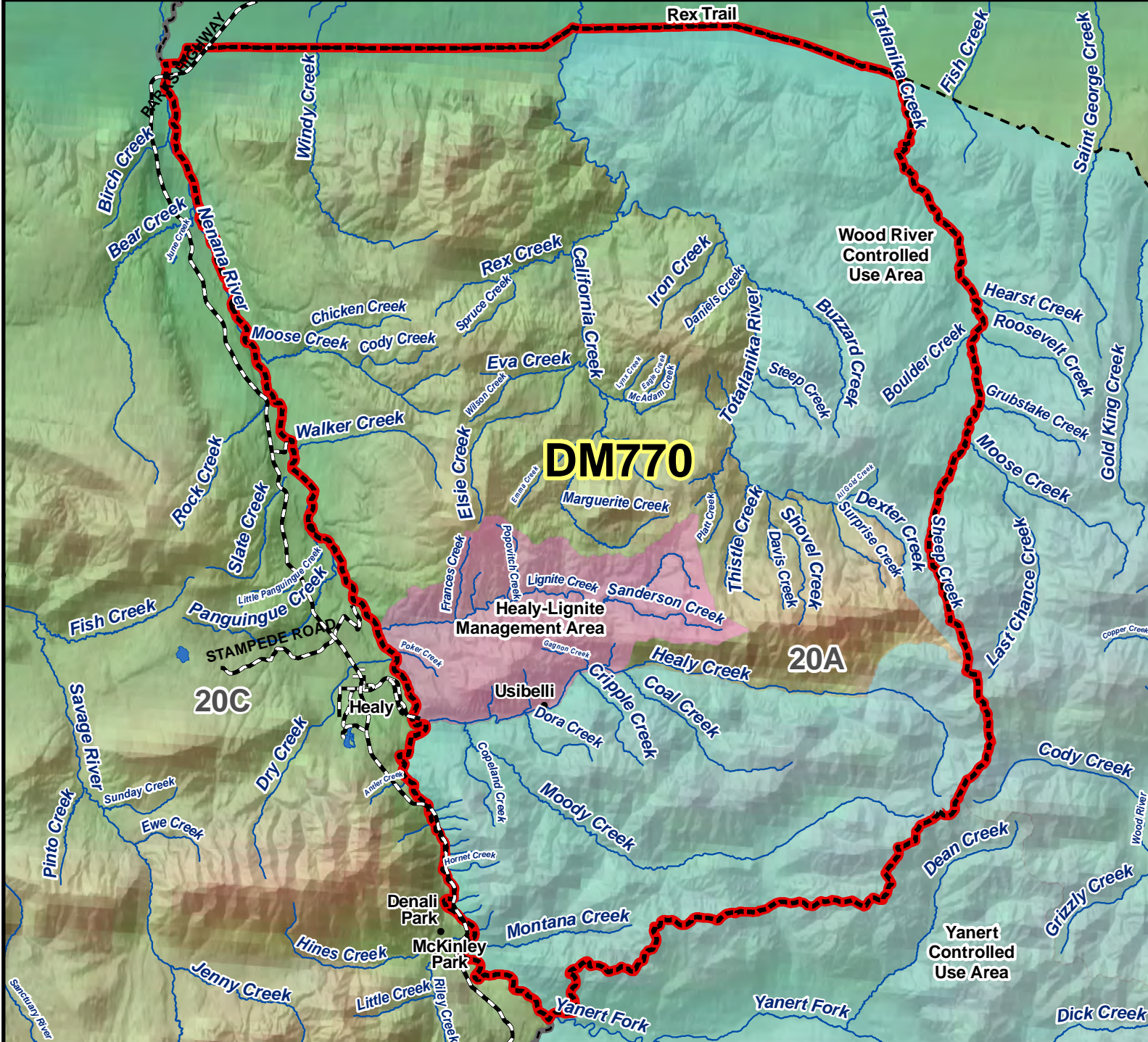
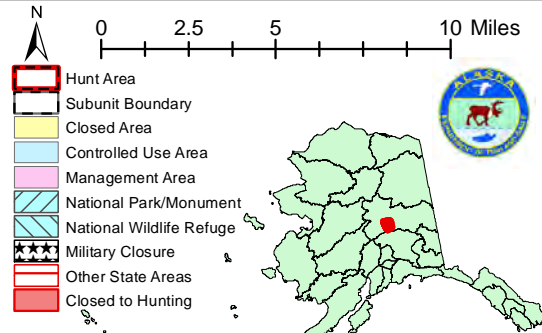


DM770 Moose Drawing Permit Hunt

This map is intended for hunt planning use, not for determining legal property or regulatory boundaries. Content is compiled from various sources and is subject to change without notice. See current hunting regulations for written descriptions of boundaries. Hunters are responsible for knowing the land ownership and regulations of the areas they intend to hunt.



AREA DESCRIPTION: Unit 20A; that portion of Unit 20A bounded by a line beginning at the intersection of the east bank of the Nenana River and the Rex Trail then easterly along the south side of the Rex Trail to the east bank of Tatlanika Creek, then upstream easterly along the east bank Tatlanika Creek to Sheep Creek, then along the east bank of Sheep Creek to its headwaters, then southerly along the divide separating the Wood River drainage from the Healy Creek and Moody Creek drainages, then westerly along the divide separating the Moody Creek and Montana Creek drainages from the Yanert River drainage to the east bank of the Nenana River, then northerly along the east bank of the Nenana River to its intersection with the Rex Trail.



Please refer to the Alaska Hunting Regulations booklet for bag type, seasons, and additional regulations concerning this hunt.