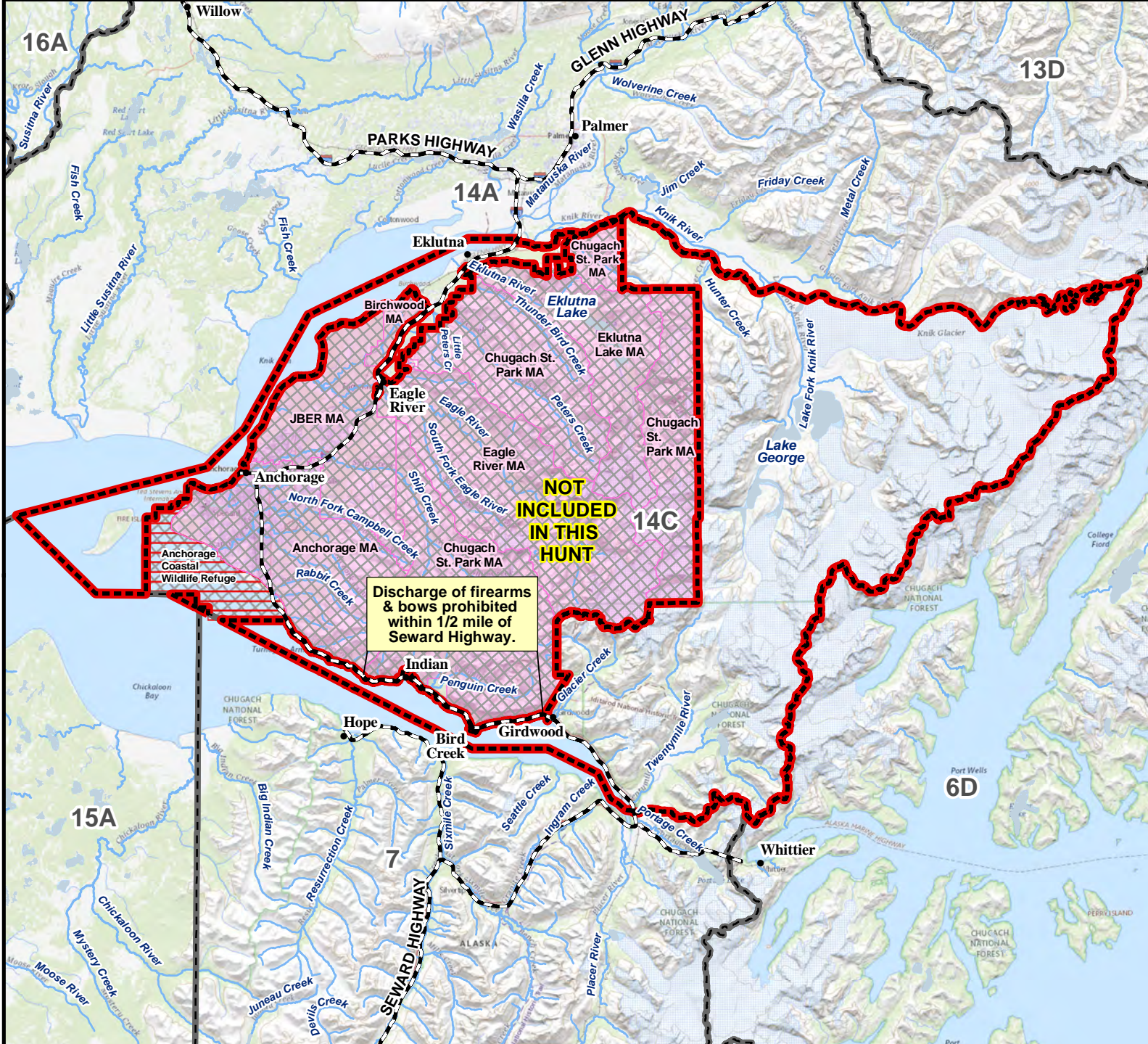
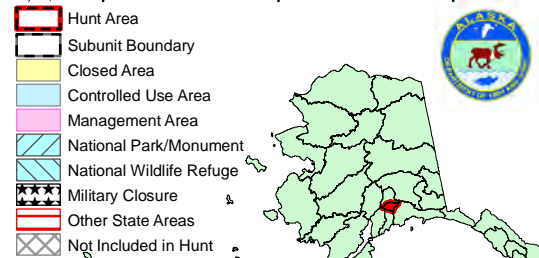
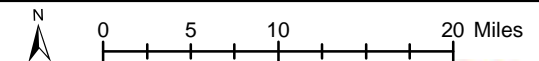


Unit 14C, Remainder Brown Bear - General Hunt Residents and Nonresidents

This map is intended for hunt planning use, not for determining legal property or regulatory boundaries. Content is compiled from various sources and is subject to change without notice. See current hunting regulations for written descriptions of boundaries. Hunters are responsible for knowing the land ownership and regulations of the areas they intend to hunt.



AREA DESCRIPTION: Unit 14C, remainder.



Please refer to the Alaska Hunting Regulations booklet for bag type, seasons, and additional regulations concerning this hunt.