

Division of Wildlife Conservation
Doug Vincent-Lang, Acting Director
Region I – Southeast Alaska
304 Lake Street, Room 103
Sitka, AK 99835
(907) 747-5449

Alaska Department of Fish and Game
Cora Campbell, Commissioner
PO Box 115526
Juneau, AK 99811-5526
www.adfg.alaska.gov

PRESS RELEASE

For Immediate Release: October 23, 2012

**CONTACT: Phil Mooney, Sitka Area
Management Biologist, (907) 747-5449;
phil.mooney@alaska.gov**

DOE SEASON CLOSURE NORTHEAST CHICHAGOF CONTROLLED USE AREA (NECCUA) AND ADJACENT AREA OF CHICHAGOF ISLAND

(Sitka) The Alaska Department of Fish and Game will close the Northeast Chichagof Controlled Use Area and an adjacent area of Chichagof Island in Game Management Unit 4 to taking of female deer (does) on October 26, 2012. This action is being taken to allow recovery of a deer population that has been substantially reduced as a result of several consecutive hard winters. An emergency order (**#01-08-12**) has been issued to close the doe season in this area at 11:59 PM on Thursday, October 25, 2012. The closure will remain in effect for the remainder of the State season, through December 31, 2012.

Record snowfall during the winter of 2006-07, persisting into late spring, resulted in a substantial winter deer die-off. Similar winter weather occurred again in 2007-08 and 2008-09, thereby disallowing a substantive recovery in the deer population. Staff from the Alaska Department of Fish and Game's Division of Wildlife Conservation conducted deer mortality and condition surveys throughout much of Southeast Alaska during late winters and springs of 2007-2012. These surveys indicated that parts of northern Southeast, including NECCUA and adjacent areas, retained and manifested the effects from the three consecutive hard winters and the associated weather-related deer mortality.

Field surveys and ongoing deer research in NECCUA continue to indicate a substantial reduction in the deer population as compared with previous years. Additional doe harvest, at this time, would jeopardize the long-term recovery of the population.

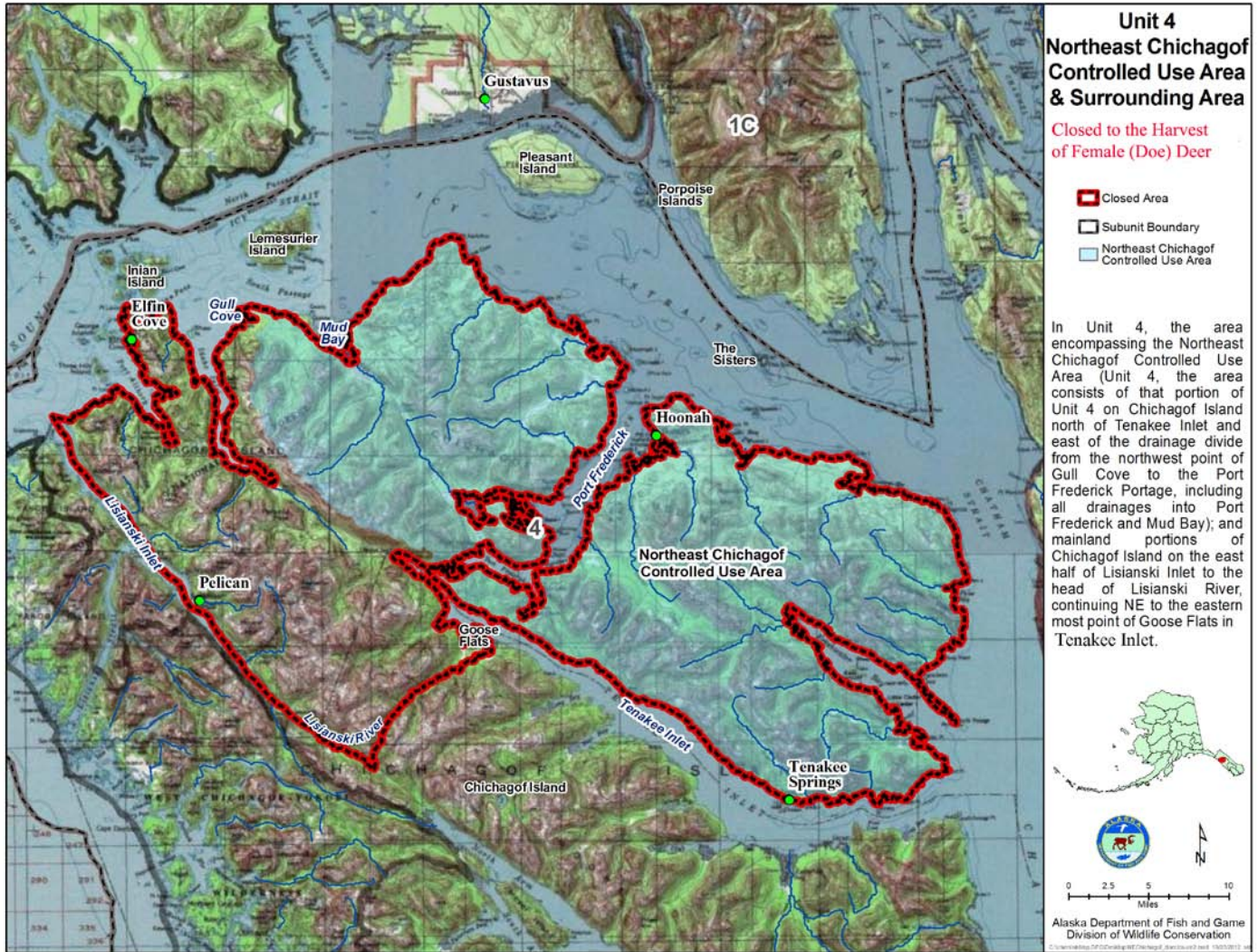
Those portions of Unit 4 not affected by this emergency order, and not previously closed by emergency order, will remain open. Please consult the 2012-13 Alaska Hunting Regulations for descriptions of hunt areas, boundaries, and season dates. Hunters with questions about deer hunting in Game Management Unit 4 can contact the Alaska Department of Fish and Game's Sitka Area Office at 747-5449.

Additional information and maps concerning the federal subsistence season and hunter qualifications can be obtained by contacting the USFS district office in Hoonah at 945-3631, or online at <http://alaska.fws.gov/asm/index.cfml>. Questions regarding the federal season may also be directed to the district offices in Sitka at 747-6671; Juneau at 586-8800, or the Admiralty National Monument at 586-8790.

See the attached map.

Division of Wildlife Conservation
Doug Vincent-Lang, Acting Director
Region I – Southeast Alaska
 304 Lake Street, Room 103
 Sitka, AK 99835
 (907) 747-5449

Alaska Department of Fish and Game
Cora Campbell, Commissioner
 PO Box 115526
 Juneau, AK 99811-5526
www.adfg.alaska.gov



####